



## Ashridge Close

**£470,000**

A well-presented two-bedroom, two-bathroom apartment offering bright and well-balanced accommodation, ideally suited to first-time buyers, downsizers or investors.

The property features a spacious open-plan kitchen and living area measuring over 22ft, creating an excellent space for modern living and entertaining. Large doors lead out to a private balcony, providing a pleasant outdoor area and allowing plenty of natural light into the main living space.

There are two well-proportioned bedrooms, including a principal bedroom with the benefit of an en-suite bathroom. A second bedroom is served by a modern family bathroom, offering a practical layout for guests or sharers.

Gardenia Court forms part of a well-regarded residential development located within easy reach of local shops, transport links and green spaces, making it a convenient North London location. Sole Agent. Chain Free.

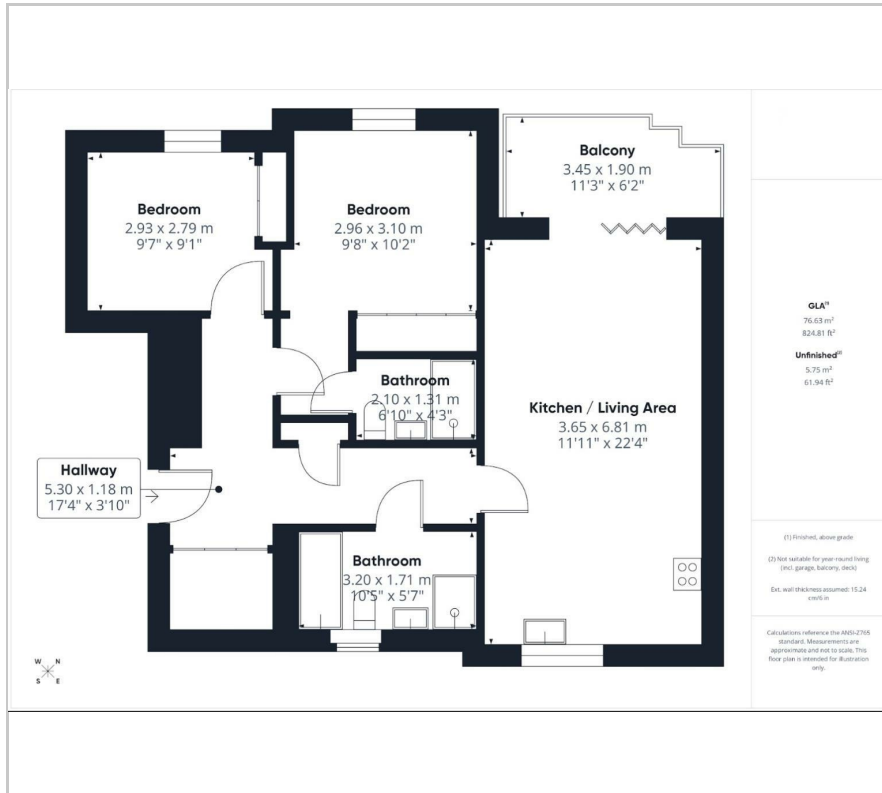
- 824 sq ft - Two bedroom apartment
- Two modern bathrooms
- En-suite to principal bedroom
- Bright and well-proportioned layout
- Private balcony
- Modern fitted kitchen
- Popular residential development
- Ideal for first-time buyers or investors

### Viewing

Please contact our Mill Hill Office on 02089590011 if you wish to arrange a viewing appointment for this property or require further information.



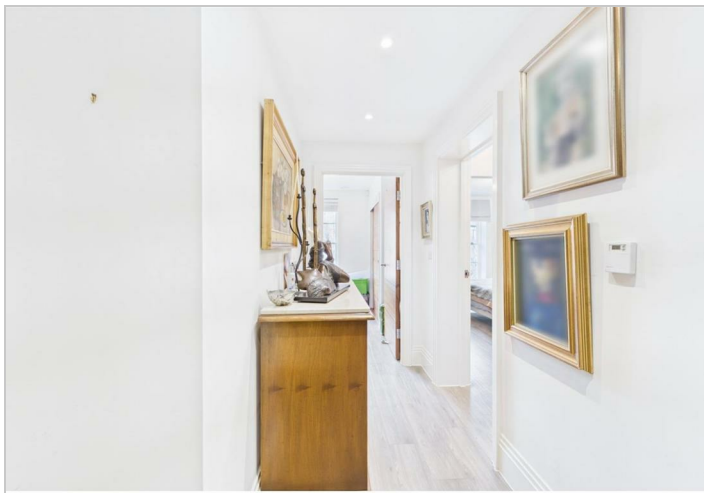
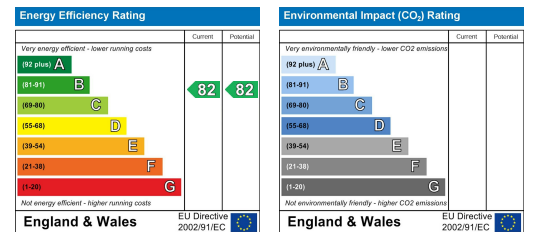
## Floor Plan



## Area Map



## Energy Efficiency Graph



These particulars, whilst believed to be accurate are set out as a general outline only for guidance and do not constitute any part of an offer or contract. Intending purchasers should not rely on them as statements of representation of fact, but must satisfy themselves by inspection or otherwise as to their accuracy. No person in this firm's employment has the authority to make or give any representation or warranty in respect of the property.