



Bressay Drive, Mill Hill, NW7

£349,950

A well-presented two double bedroom apartment offering bright, modern living accommodation, ideally suited to first-time buyers, downsizers, or investors alike.

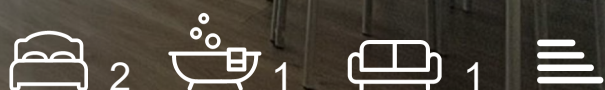
The property features a spacious reception room providing a comfortable living and entertaining space, complemented by a contemporary kitchen with modern finishes and practical storage. Both bedrooms are well-proportioned doubles, providing excellent flexibility for residents, guests, or home office use. A modern bathroom completes the accommodation.

Further benefits include allocated parking, low service charges. Lerwick Court forms part of a popular residential development conveniently located for Mill Hill's local amenities, green spaces, and transport links, providing both comfort and convenience. Sole Agents.

- Two double bedroom apartment
- Modern living throughout
- Bright reception room
- Contemporary kitchen
- Modern bathroom
- Well-presented interior
- Popular residential development
- Sought-after NW7 location
- Underground Parking

Viewing

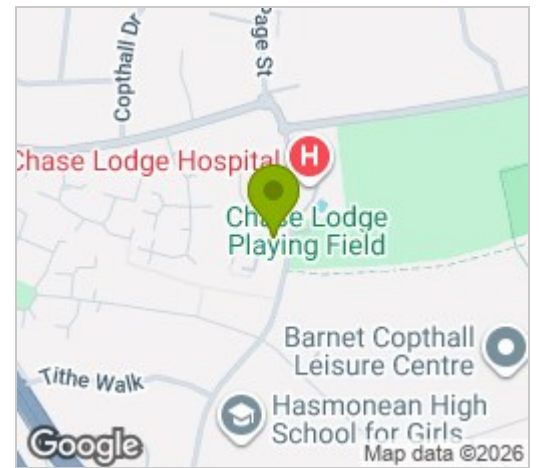
Please contact our Mill Hill Office on 02089590011 if you wish to arrange a viewing appointment for this property or require further information.



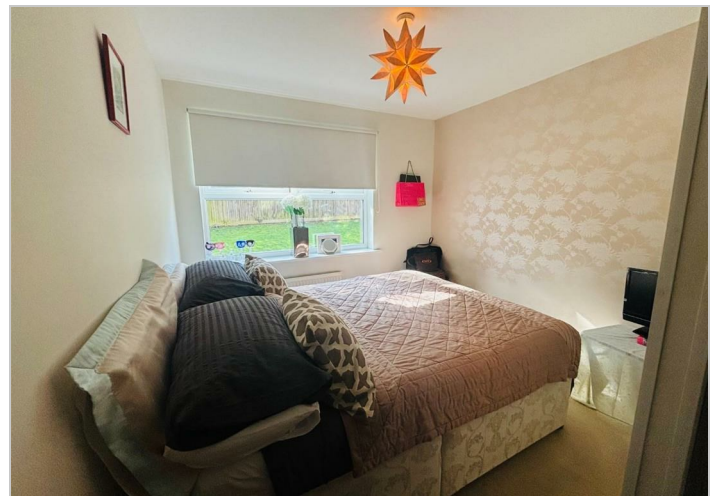
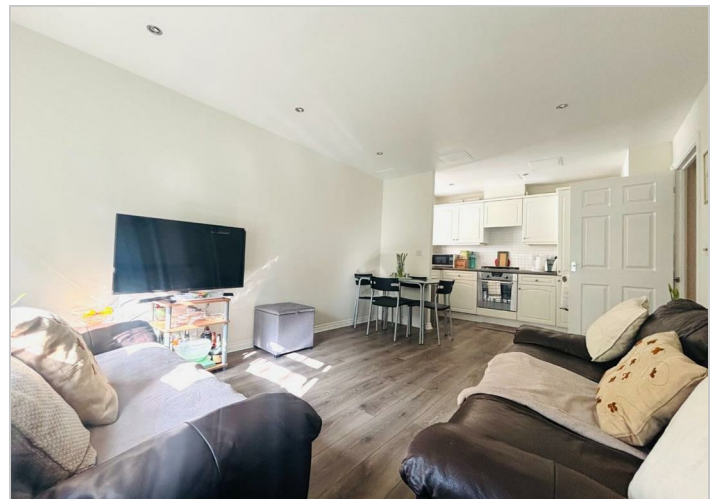
Floor Plan



Area Map



Energy Efficiency Graph



These particulars, whilst believed to be accurate are set out as a general outline only for guidance and do not constitute any part of an offer or contract. Intending purchasers should not rely on them as statements of representation of fact, but must satisfy themselves by inspection or otherwise as to their accuracy. No person in this firm's employment has the authority to make or give any representation or warranty in respect of the property.