



Worcester Crescent, Mill Hill, NW7

£975,000

1573 Sq Ft - Situated in a sought-after location, this beautifully presented four-bedroom semi-detached family home offers generous living accommodation throughout.

The ground floor features a spacious reception room, a dining room, and a modern fitted kitchen leading to a bright breakfast room with direct access to the garden. There is also a versatile fourth bedroom/TV room and a convenient guest WC.

Upstairs comprises of three well-proportioned bedrooms and a contemporary family bathroom. The principal bedroom benefits from ample fitted wardrobes and pleasant views over the rear garden.

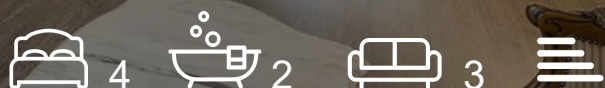
Externally, the property boasts a large private garden ideal for outdoor entertaining, and a block-paved driveway providing off-street parking.

Located on one of Mill Hill's most desirable roads, catchment of excellent local schools and within easy reach of Mill Hill Broadway's shops, restaurants, Thameslink Station, and excellent local schools. Sole Agent.

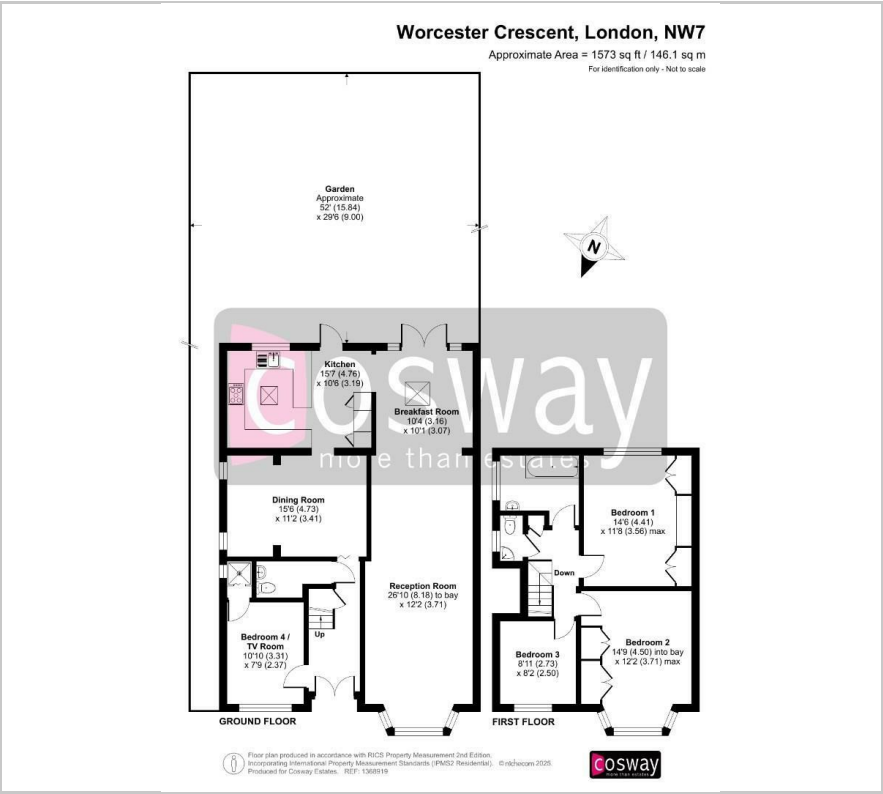
- Spacious 1,573 sq ft family home
- Sought-after Mill Hill location
- Modern kitchen with breakfast area
- Modern condition throughout
- Large private garden and driveway
- Catchment of excellent local schools
- 4 bedrooms
- Sole Agent

Viewing

Please contact our Mill Hill Office on 02089590011 if you wish to arrange a viewing appointment for this property or require further information.



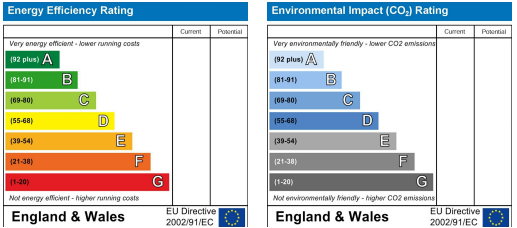
Floor Plan



Area Map



Energy Efficiency Graph



These particulars, whilst believed to be accurate are set out as a general outline only for guidance and do not constitute any part of an offer or contract. Intending purchasers should not rely on them as statements of representation of fact, but must satisfy themselves by inspection or otherwise as to their accuracy. No person in this firms employment has the authority to make or give any representation or warranty in respect of the property.