



## Zodiac Close

**£2,000 Per Month**

Cosway Estates are pleased to offer this lovely modern first floor two double bedroom/two bathroom apartment in this popular well-sought after modern development in Edgware. This property consists of two good size double bedrooms (1 with high-spec ensuite shower room); 2nd bathroom with bath & shower and a spacious modern open-plan fitted kitchen and living room leading out onto the balcony. Comes unfurnished. Wood flooring and carpets in bedrooms. This property also comes with underground secure parking. This property is situated within minutes of Edgware's transport links and amenities. AVAILABLE NOW. VIEWINGS HIGHLY RECOMMENDED.

### Viewing

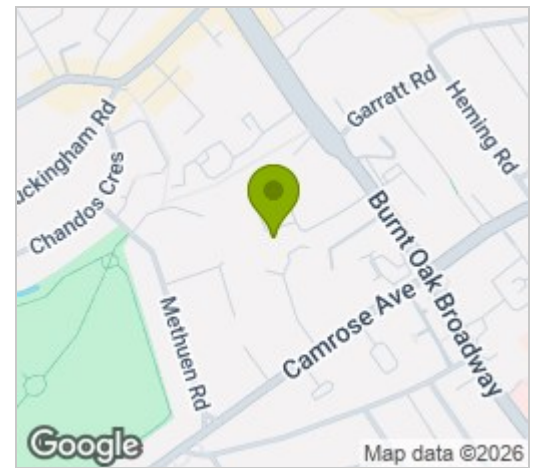
Please contact our Mill Hill Office on 02089590011 if you wish to arrange a viewing appointment for this property or require further information.



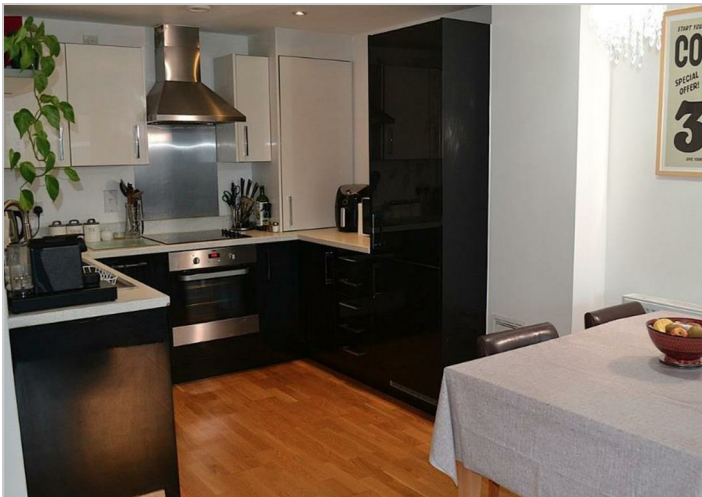
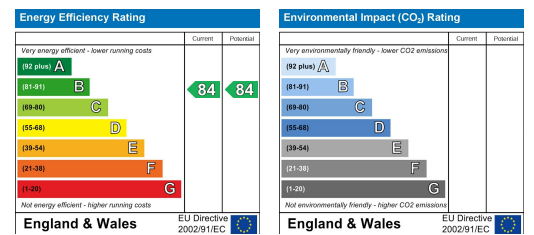
## Floor Plan



## Area Map



## Energy Efficiency Graph



These particulars, whilst believed to be accurate are set out as a general outline only for guidance and do not constitute any part of an offer or contract. Intending purchasers should not rely on them as statements of representation of fact, but must satisfy themselves by inspection or otherwise as to their accuracy. No person in this firm's employment has the authority to make or give any representation or warranty in respect of the property.