



Rosebery Place, Mill Hill, NW7

£525,000

Situated in a private gated development is this beautifully presented two double bedroom ground floor garden apartment ideally located in the heart of NW7. Offering approximately 792 sq ft of stylish living space, this property combines modern design with excellent functionality.

The apartment features a spacious open-plan kitchen/reception/dining room perfect for both relaxing and entertaining, with direct access to a private garden – ideal for outdoor dining and leisure.

There are two well-proportioned bedrooms, including a large principal bedroom with en-suite and a bright second bedroom and additional bathroom.

The property is within walking distance to the amenities of Mill Hill Broadway and the Thames Link Station. Sole Agent.

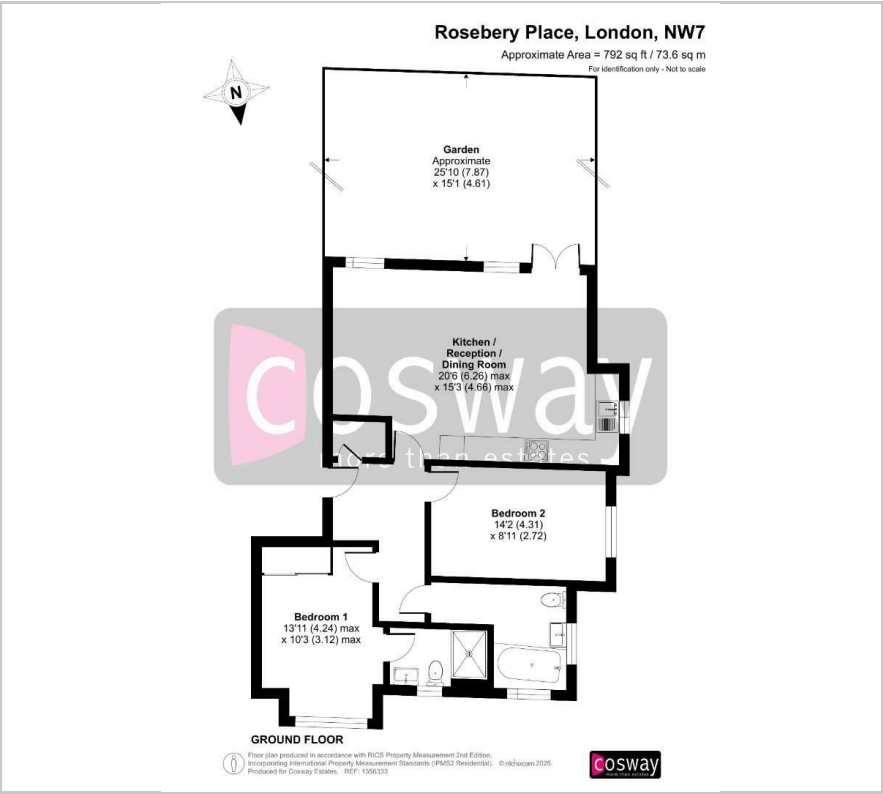
- Ground Floor Garden Flat
- 2 Double Bedrooms
- Modern Open-Plan Living
- Close to Local Amenities
- Allocated Parking
- Gated Development
- 2 Bathrooms (1 En-Suite)
- Sole Agent

Viewing

Please contact our Mill Hill Office on 02089590011 if you wish to arrange a viewing appointment for this property or require further information.



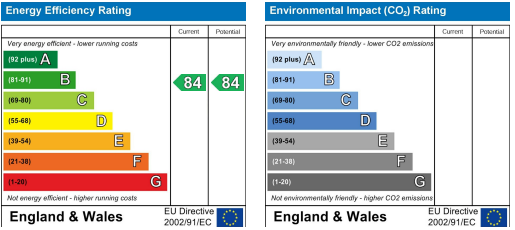
Floor Plan



Area Map



Energy Efficiency Graph



These particulars, whilst believed to be accurate are set out as a general outline only for guidance and do not constitute any part of an offer or contract. Intending purchasers should not rely on them as statements of representation of fact, but must satisfy themselves by inspection or otherwise as to their accuracy. No person in this firms employment has the authority to make or give any representation or warranty in respect of the property.