



## Letchworth Road

**£1,900 Per Month**

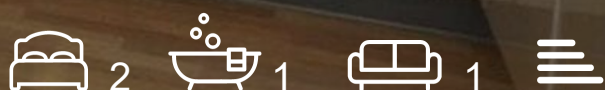
Cosway Estates are delighted to offer for rent this lovely two bedroom modern first floor flat , situated in the highly sought after Stanmore Place development, close to Canons Park station (Jubilee Line.)

This property comprises of two very good size bedrooms , spacious and bright open plan kitchen /reception with a balcony, shower and bathroom suite , intercom and a reserved allocated parking space.

Available 22nd September 2025 , viewings highly recommended.

### Viewing

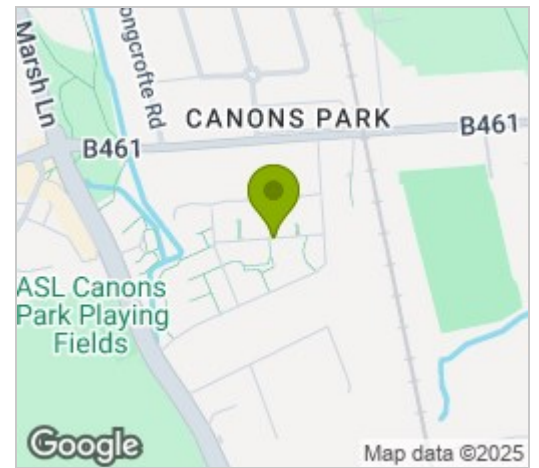
Please contact our Mill Hill Office on 02089590011 if you wish to arrange a viewing appointment for this property or require further information.



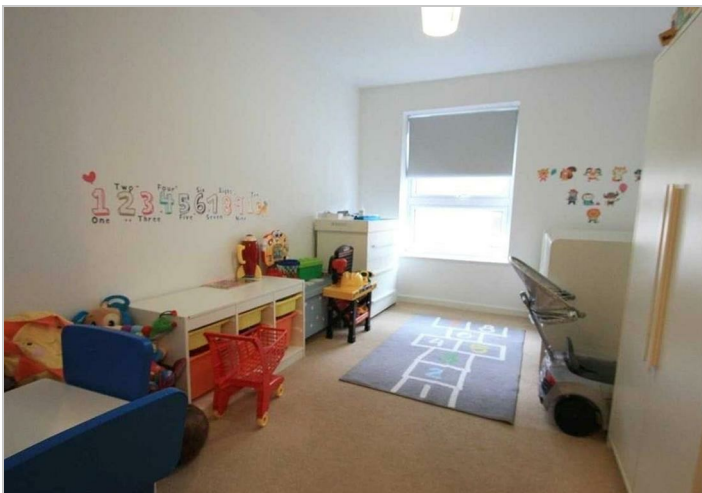
## Floor Plan



## Area Map



## Energy Efficiency Graph



These particulars, whilst believed to be accurate are set out as a general outline only for guidance and do not constitute any part of an offer or contract. Intending purchasers should not rely on them as statements of representation of fact, but must satisfy themselves by inspection or otherwise as to their accuracy. No person in this firm's employment has the authority to make or give any representation or warranty in respect of the property.