



Croft Close

£5,000 Per Month

Cosway Estates are pleased to offer for rent this stunning breath-taking five bedroom gated detached home located in quiet cul-de-sac off Marsh Lane in Mill Hill. The property has been newly refurbished. This property comprises of an extremely large reception/dining room with open-plan kitchen; five double bedrooms, all with en-suite shower rooms; utility room and loft space which can be used as an office.

Ready for immediate occupancy, the property also includes a lovely rear landscaped and ample off-street parking for multiple cars. Additionally, the house is within close proximity to excellent local schools and is within walking distance to Mill Hill Broadway.

This stunning home perfectly combines modern amenities with classic charm, making it an ideal choice for a discerning tenant. AVAILABLE NOW. Viewings highly advised.

Viewing

Please contact our Mill Hill Office on 02089590011 if you wish to arrange a viewing appointment for this property or require further information.



5



5



2

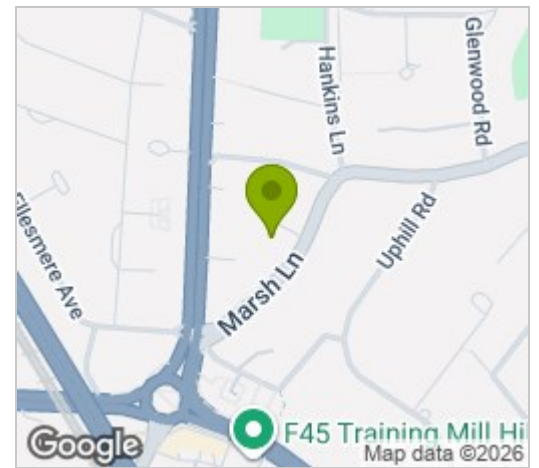


D

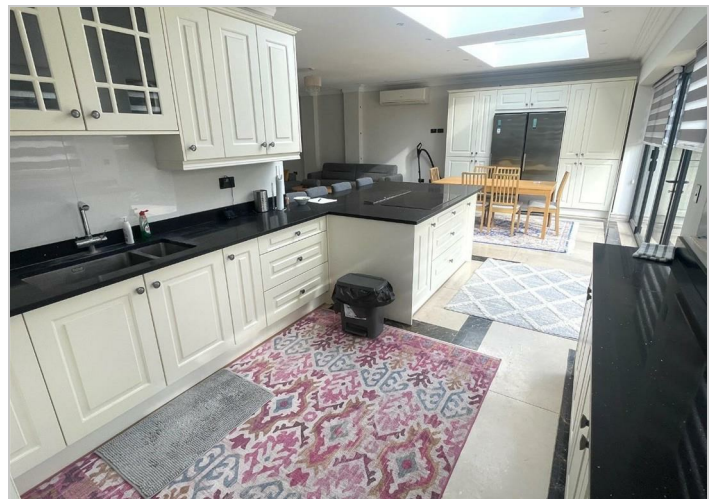
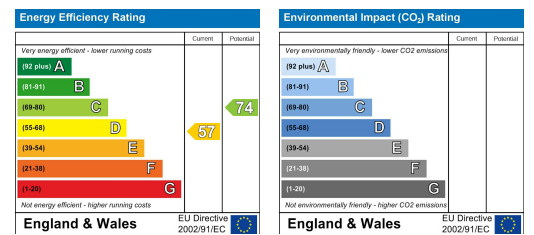
Floor Plan



Area Map



Energy Efficiency Graph



These particulars, whilst believed to be accurate are set out as a general outline only for guidance and do not constitute any part of an offer or contract. Intending purchasers should not rely on them as statements of representation of fact, but must satisfy themselves by inspection or otherwise as to their accuracy. No person in this firm's employment has the authority to make or give any representation or warranty in respect of the property.