



Beagle Close

£2,200 Per Month

Cosway Estates are pleased to offer for rent this luxurious spacious two bedroom second-floor apartment set within a secure private gated development. The interior has been completed to a high standard with bespoke details throughout, offering bright, spacious rooms and contemporary design.

This property comprises of spacious open-plan living area with stylish modern fitted kitchen with integrated Bosch appliances, stone worktops, and access to a private balcony; two good size bedrooms with fitted wardrobes; en-suite shower room and a family bathroom. Ideally located close to local shopping options including M&S and Waitrose, close to Virgin Active Gym and to Mill Hill East tube station (Northern Line). AVAILABLE NOW. Viewings highly advised.

Viewing

Please contact our Mill Hill Office on 02089590011 if you wish to arrange a viewing appointment for this property or require further information.



2



2

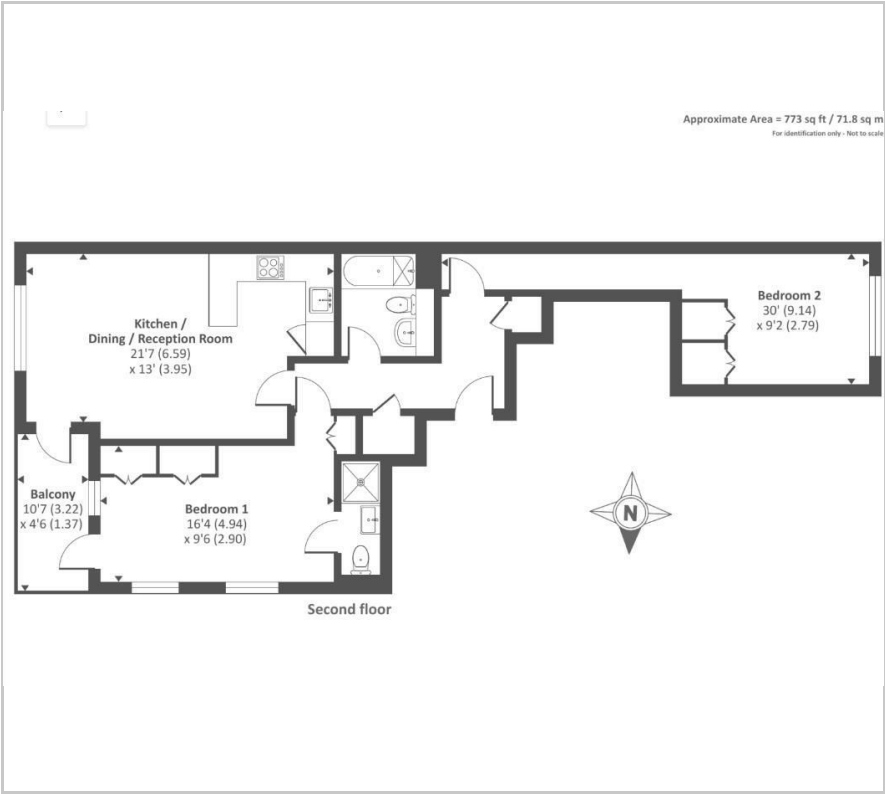


1

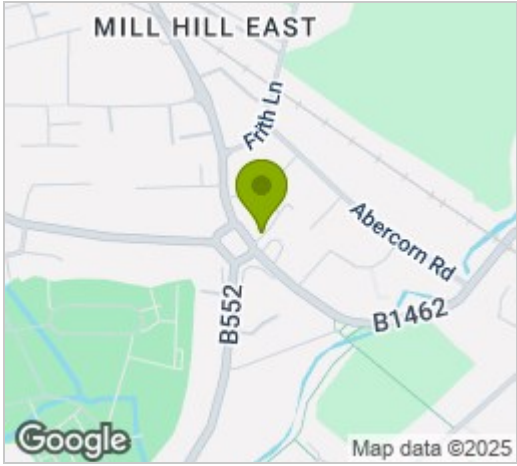


B

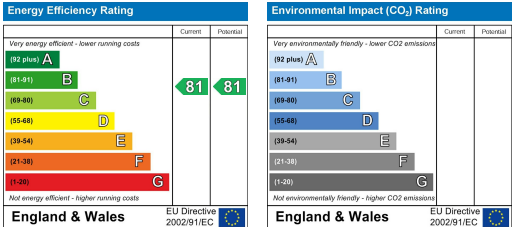
Floor Plan



Area Map



Energy Efficiency Graph



These particulars, whilst believed to be accurate are set out as a general outline only for guidance and do not constitute any part of an offer or contract. Intending purchasers should not rely on them as statements of representation of fact, but must satisfy themselves by inspection or otherwise as to their accuracy. No person in this firms employment has the authority to make or give any representation or warranty in respect of the property.