



Victoria Road

£1,175,000

Spacious 4-Bedroom Semi-Detached Home in the Heart of Mill Hill. This beautifully maintained four-bedroom semi-detached home offers generous space and a superb layout, making it an ideal choice for families. Located in a prime Mill Hill location, the home benefits from a sunny southwest-facing garden and off-street parking.

The ground floor features a bright, spacious and well appointed open-plan kitchen, dining, and living area, perfect for entertaining, enhanced by bi-fold doors to the garden and skylights that fill the space with natural light. A separate lounge offers a cosy retreat, while a utility room and guest WC add practicality.

Upstairs, the first floor includes two large double bedrooms, a contemporary sleek family bathroom, and a versatile fourth bedroom or office. The top floor is dedicated to a spacious principal suite with an en-suite, built-in wardrobes, and useful eaves storage.

Ideally located just moments from Mill Hill Park and within easy reach of Mill Hill Broadway's shops, cafés, and transport links, this home perfectly balances comfort, space, and convenience.

Viewing

Please contact our Mill Hill Office on 02089590011 if you wish to arrange a viewing appointment for this property or require further information.



4



2

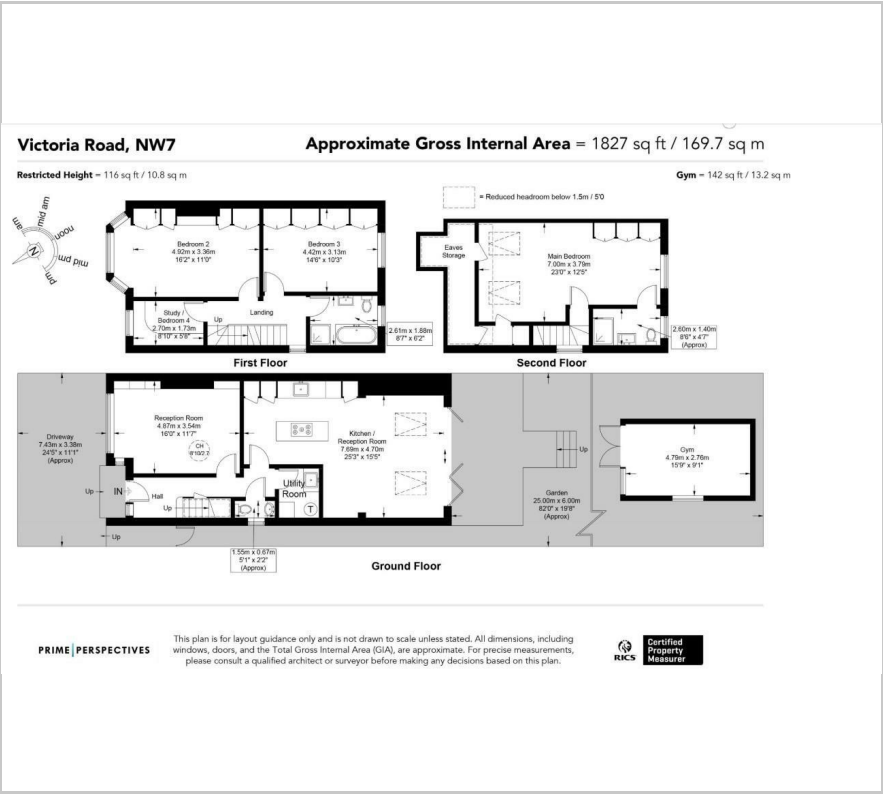


2



C

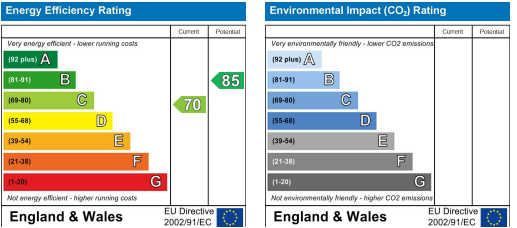
Floor Plan



Area Map



Energy Efficiency Graph



These particulars, whilst believed to be accurate are set out as a general outline only for guidance and do not constitute any part of an offer or contract. Intending purchasers should not rely on them as statements of representation of fact, but must satisfy themselves by inspection or otherwise as to their accuracy. No person in this firms employment has the authority to make or give any representation or warranty in respect of the property.