

## Gladstone Park Gardens

**£5,500 Per Month**

Cosway Estates are pleased to offer for rent this stunning large interior designed five bedroom family home, fully renovated to a very high standard, moments from Gladstone Park in Dollis Hill.

This property comprises of two spacious reception rooms; a high-spec German fully fitted kitchen with central island; dining area with doors opening onto lovely south-facing garden; four bathrooms (two of which are en-suite) and utility area. There are five good size bedrooms with the main bedroom having great views over the London skyline including the BT Tower and Shard, which also has an en-suite with sauna and power jet shower. Situated in catchment area of several local schools and short drive to Brent Cross Shopping Centre. AVAILABLE NOW. Viewings highly advised.

### Viewing

Please contact our Mill Hill Office on 02089590011 if you wish to arrange a viewing appointment for this property or require further information.



5



4



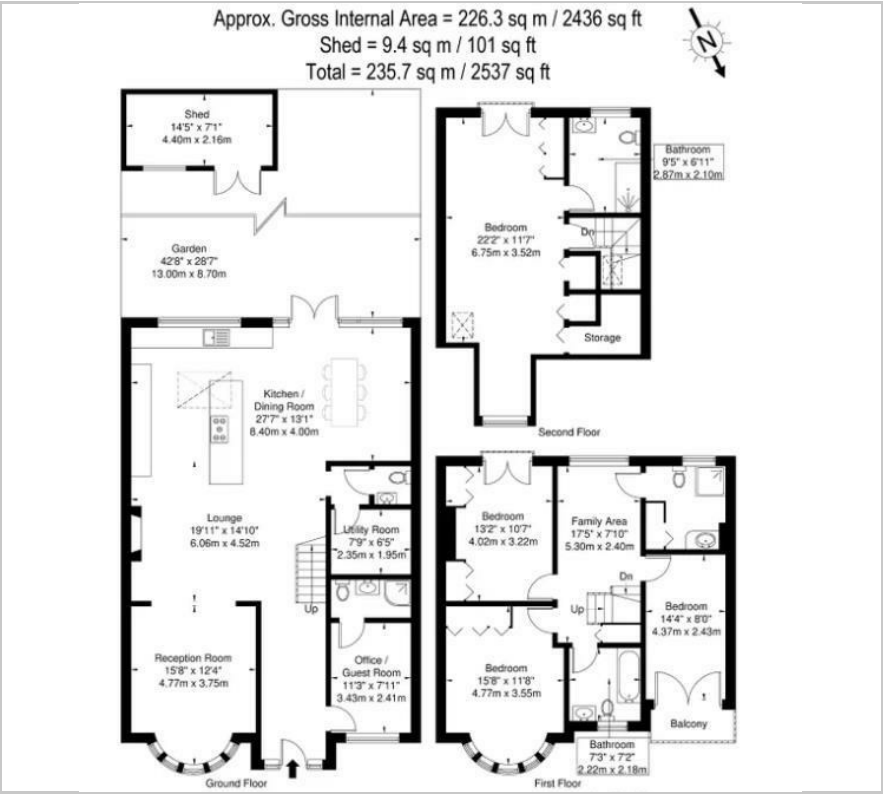
2



C



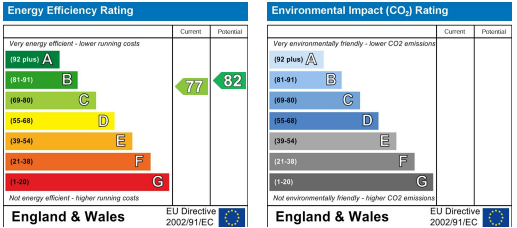
Floor Plan



Area Map



Energy Efficiency Graph



These particulars, whilst believed to be accurate are set out as a general outline only for guidance and do not constitute any part of an offer or contract. Intending purchasers should not rely on them as statements of representation of fact, but must satisfy themselves by inspection or otherwise as to their accuracy. No person in this firms employment has the authority to make or give any representation or warranty in respect of the property.