



Langstone Way

£2,250 Per Month

Cosway Estates are pleased to offer for rent this lovely modern well-presented two double bedroom ground floor flat, **INCLUSIVE OF WATER RATES**, in a popular block located in the well sought after Lidbury Square development. This property comprises of a spacious reception room with open plan fully integrated kitchen; two double bedrooms (en-suite to master bedroom) and 2nd bathroom. This property benefits from having a balcony; communal roof terrace and secure underground parking. Situated opposite Waitrose and the Virgin Active Gym and a short walk to Mill Hill East tube station. Available now. **VIEWINGS HIGHLY ADVISED.**

Viewing

Please contact our Mill Hill Office on 02089590011 if you wish to arrange a viewing appointment for this property or require further information.



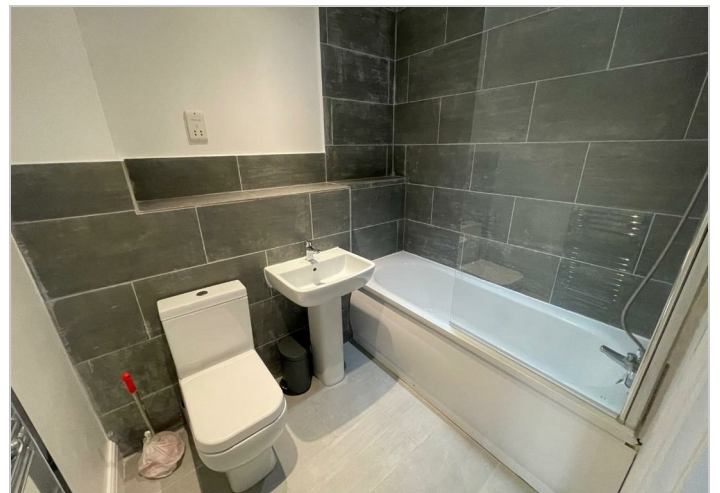
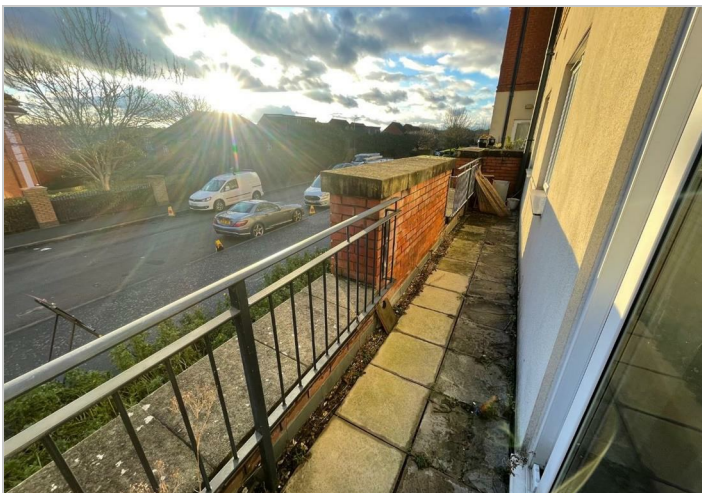
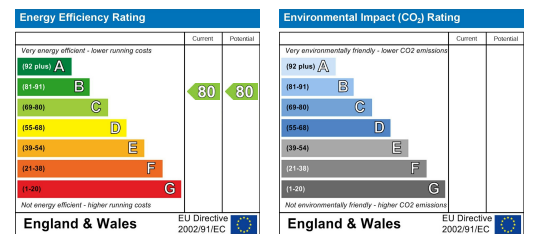
Floor Plan



Area Map



Energy Efficiency Graph



These particulars, whilst believed to be accurate are set out as a general outline only for guidance and do not constitute any part of an offer or contract. Intending purchasers should not rely on them as statements of representation of fact, but must satisfy themselves by inspection or otherwise as to their accuracy. No person in this firm's employment has the authority to make or give any representation or warranty in respect of the property.