



Honiton Gardens

£2,100 Per Month

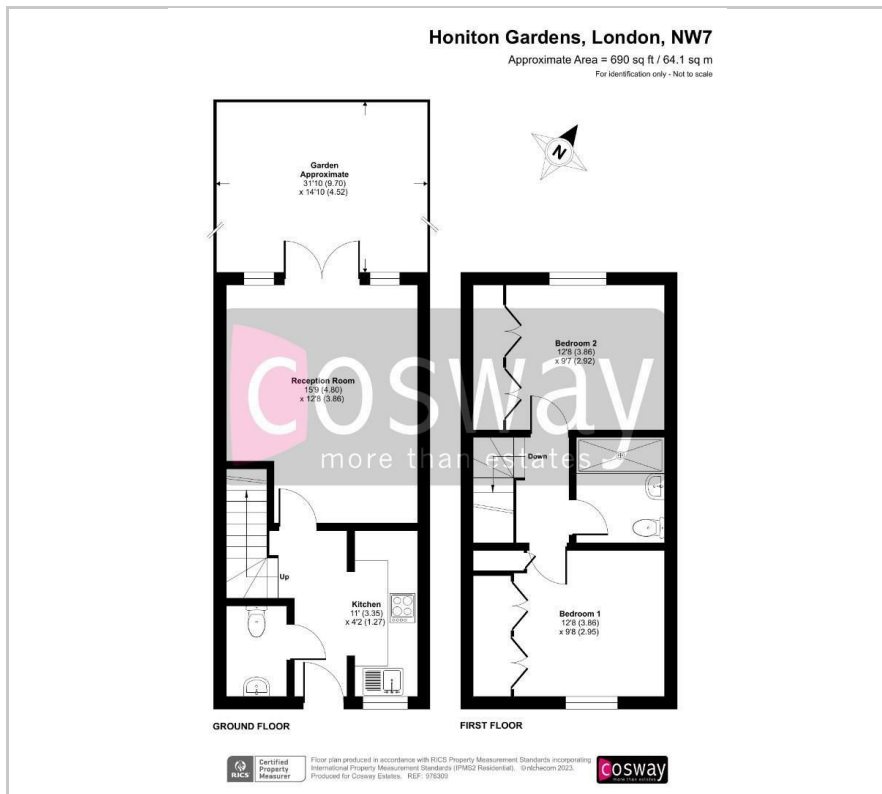
Cosway Estates are pleased to offer for rent this lovely bright modern two double bedroom house, situated within the popular Lidbury Square development, offered in excellent condition throughout. This property comprises of a spacious reception room with French doors leading out to a well maintained garden; separate modern fitted kitchen and a downstairs WC. Upstairs has two double bedrooms with fitted wardrobes and a modern bathroom. The house comes with 2 allocated parking spaces. Located within a short distance to Mill Hill East Underground Station. AVAILABLE FEBRUARY 2025. Viewings highly advised.

Viewing

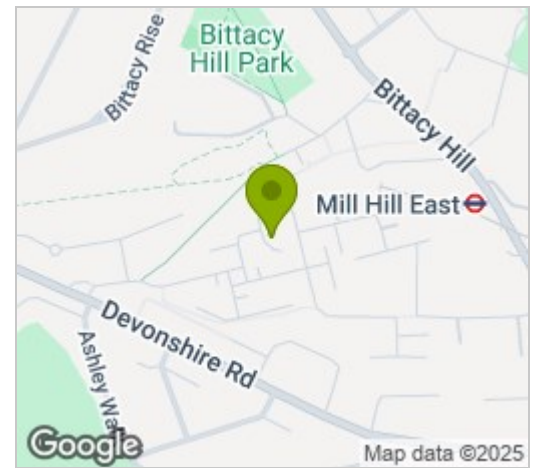
Please contact our Mill Hill Office on 02089590011 if you wish to arrange a viewing appointment for this property or require further information.



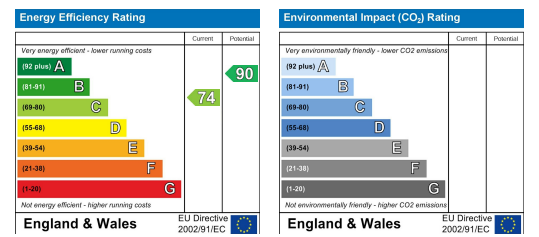
Floor Plan



Area Map



Energy Efficiency Graph



These particulars, whilst believed to be accurate are set out as a general outline only for guidance and do not constitute any part of an offer or contract. Intending purchasers should not rely on them as statements of representation of fact, but must satisfy themselves by inspection or otherwise as to their accuracy. No person in this firm's employment has the authority to make or give any representation or warranty in respect of the property.