



Orchard Crescent

£699,950

A SPACIOUS EXTENDED THREE BEDROOM SEMI DETACHED HOUSE IN EXCELLENT CONDITION THROUGHOUT SITUATED IN POPULAR TURNING.

The property which comprises a large through reception room, a dining room, a fully fitted kitchen with under floor heating, three bedrooms, a large family bathroom also with under floor heating, off street parking for two cars and a delightful rear garden measuring approximately 80'.

Orchard Crescent is a quiet turning located in between the local amenities at Mill Hill Broadway and Edgware town centre.

Viewing Highly Recommended.

Viewing

Please contact our Mill Hill Office on 020 8959 0011 if you wish to arrange a viewing appointment for this property or require further information.



3



1

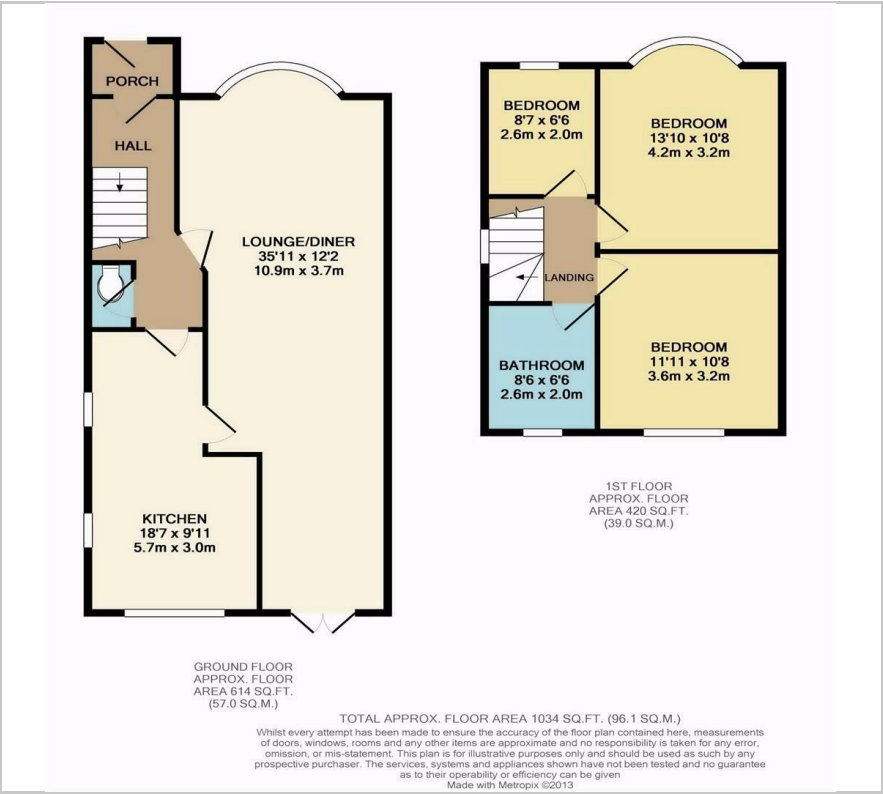


3



C

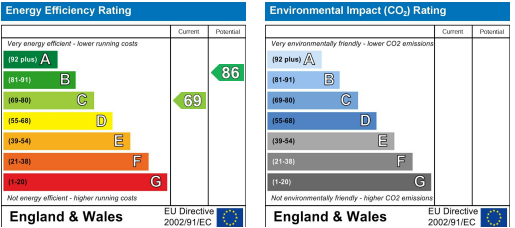
Floor Plan



Area Map



Energy Efficiency Graph



These particulars, whilst believed to be accurate are set out as a general outline only for guidance and do not constitute any part of an offer or contract. Intending purchasers should not rely on them as statements of representation of fact, but must satisfy themselves by inspection or otherwise as to their accuracy. No person in this firms employment has the authority to make or give any representation or warranty in respect of the property.