



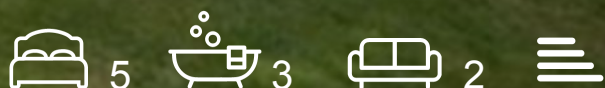
Priory Field Drive

£975,000

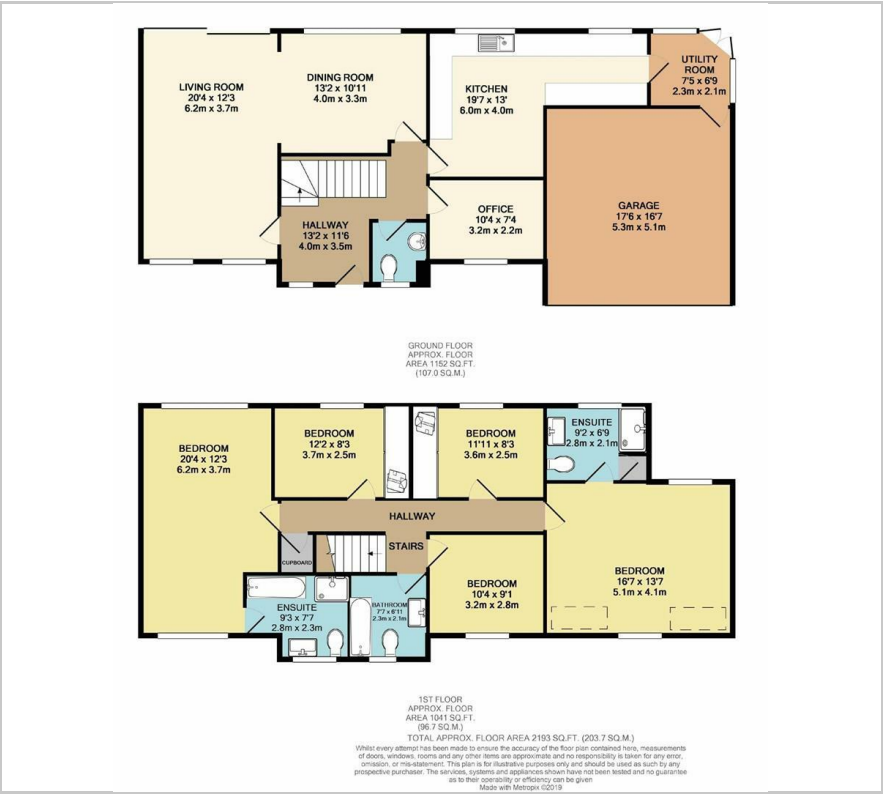
An impressive detached double fronted Georgian style house situated in a sought after exclusive development off Hale Lane and within the 'Eruv'. The property sits on an exceptionally wide plot and offers excellent family accommodation. This fantastic property boasts a bright and spacious through lounge, fully fitted kitchen breakfast room, a separate reception room, and spacious double garage. The first floor boasts a large master bedroom with en-suite a further double bedroom with en-suite three additional bedrooms and a family bathroom. The property benefits from off-street parking, scope to extend stpp and a south facing garden. The property is offered chain free. Viewing Highly Recommended. Sole Agent.

Viewing

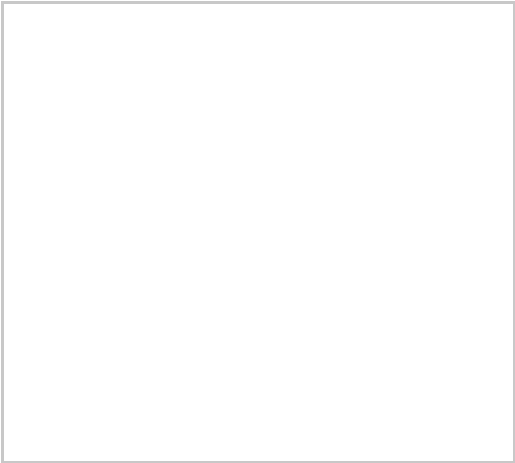
Please contact our London Office on 020 8959 0011 if you wish to arrange a viewing appointment for this property or require further information.



Floor Plan



Area Map



Energy Efficiency Graph



These particulars, whilst believed to be accurate are set out as a general outline only for guidance and do not constitute any part of an offer or contract. Intending purchasers should not rely on them as statements of representation of fact, but must satisfy themselves by inspection or otherwise as to their accuracy. No person in this firms employment has the authority to make or give any representation or warranty in respect of the property.