



233 Hardcastle House

Marmont Road, London, SE15 5TD

£2,750 Per month



233 Hardcastle House



Description

This well proportioned four bedroom apartment is located within a well maintained, purpose built building. The flat is located in central Peckham.

The property is ideal for students and sharers alike. Each bedroom is furnished with bed, wardrobe, chest of drawers and work desk providing an ideal study area and bedroom retreat. The living room is a generous size benefitting from a balcony.

The kitchen is well appointed with ample cupboard space, cooker/ hob, fridge freezer and washing machine.

The bathroom has been recently fitted and there is a separate cloakroom. A private balcony can be accessed off one of the bedrooms.

Marmont Road is situated in a perfect location, just a ten minute walk of Peckham Rye and Queens Road stations, offering access to London Bridge, Victoria and Blackfriars tube stations. Both stations are now part of the London Overground network with fast and frequent trains serving Clapham Junction,

- Four double bedrooms
- Large living area
- Balcony
- Short walk to local amenities
- Furnished
- Quiet Road

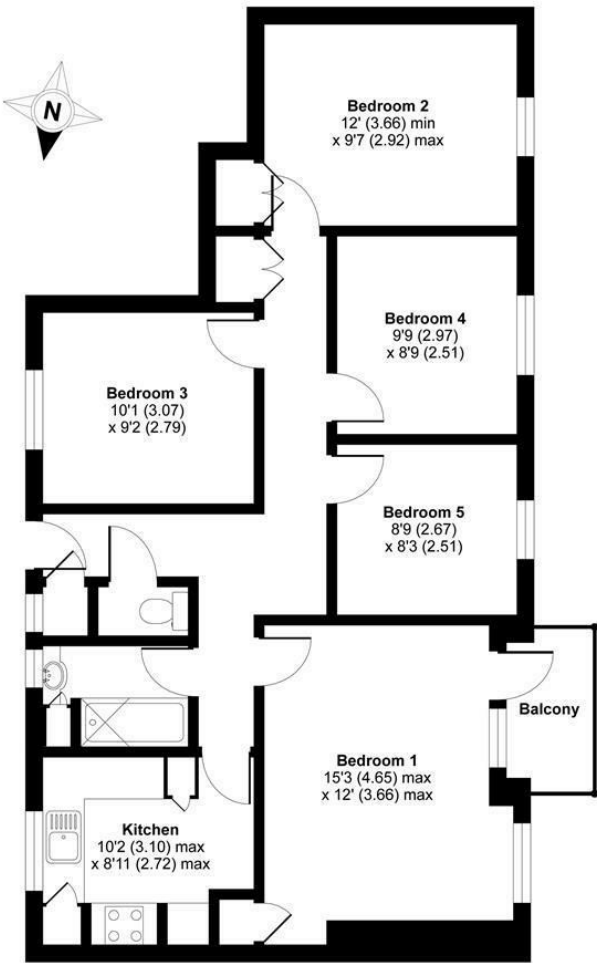




Floor Plan

Marmont Road, London, SE15

Approximate Area = 854 sq ft / 79.3 sq m
For identification only - Not to scale



FOURTH FLOOR



Floor plan produced in accordance with RICS Property Measurement Standards incorporating International Property Measurement Standards (IPMS2 Residential). © nichcom 2021. Produced for Aston Gray. REF: 758702.

Energy Efficiency Rating		
	Current	Potential
Very energy efficient - lower running costs		
(92 plus) A		
(81-91) B		
(69-80) C		
(55-68) D		
(39-54) E		
(21-38) F		
(1-20) G		
Not energy efficient - higher running costs		
England & Wales		
EU Directive 2002/91/EC		

Environmental Impact (CO ₂) Rating		
	Current	Potential
Very environmentally friendly - lower CO ₂ emissions		
(92 plus) A		
(81-91) B		
(69-80) C		
(55-68) D		
(39-54) E		
(21-38) F		
(1-20) G		
Not environmentally friendly - higher CO ₂ emissions		
England & Wales		
EU Directive 2002/91/EC		

Viewing

Please contact our Head Office Office on 03333444385 if you wish to arrange a viewing appointment for this property or require further information.

These particulars, whilst believed to be accurate are set out as a general outline only for guidance and do not constitute any part of an offer or contract. Intending purchasers should not rely on them as statements of representation of fact, but must satisfy themselves by inspection or otherwise as to their accuracy. No person in this firms employment has the authority to make or give any representation or warranty in respect of the property.

