



12 Andrews Reach

Bourne End, SL8 5GA

£2,750



12 Andrews Reach



Description

A stunning frontline riverside three bedroom end terrace house, situated within a luxury riverside gated development with beautiful gardens.

Andrews Reach enjoys ample residents parking which includes a garage and communal parking,

With new flooring and carpeting throughout, this beautifully presented home has also benefited from new light fittings. This home has an abundance of storage, with all the bedrooms containing built in wardrobes and the living/dining area containing a "secret " storage space.

The property opens to a central hallway to the principle rooms. A fully fitted kitchen features new flooring and recently updated integral appliances.

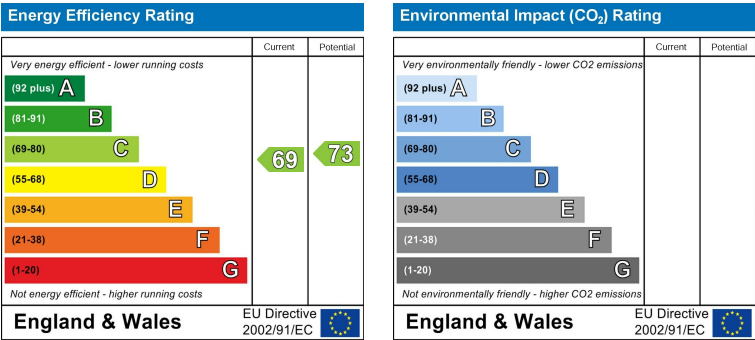
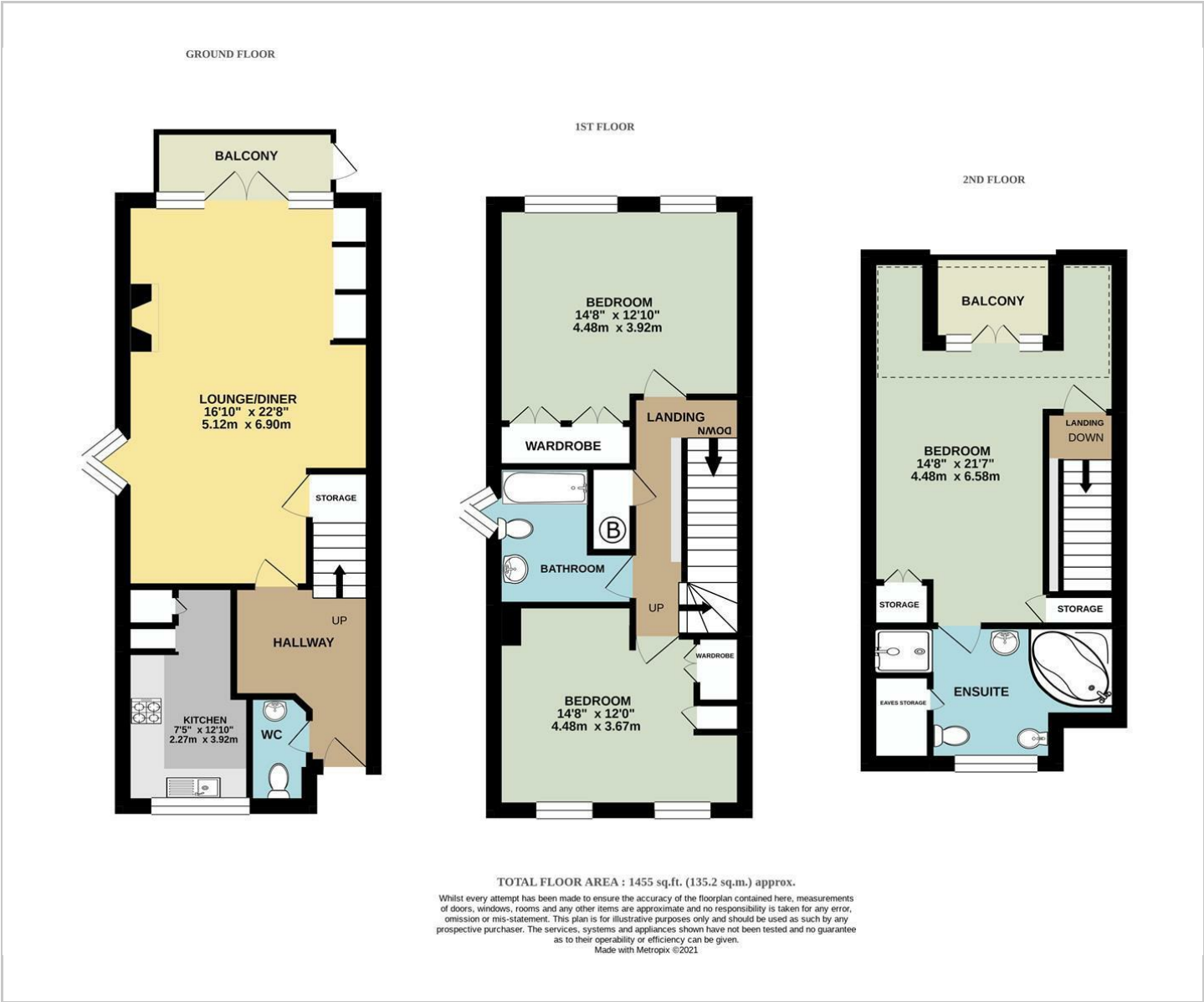
The light and spacious open plan dining/living area leads to a private terrace with beautiful direct views of the River Thames and further across to stunning National Trust land.

- Gated Riverside Development
- Three double bedrooms with built in storage
- 2Two Private terrace
- Recent replacement of balustrades to front and back
- Potential mooring available
- Stunning frontline river views and views over National Trust land
- Two bathrooms(one ensuite) and groundfloor WC
- Residents parking and garage
- Excellent transport links
- Flexible availability - unfurnished





Floor Plan



Viewing

Please contact our Head Office Office on 03333444385 if you wish to arrange a viewing appointment for this property or require further information.

These particulars, whilst believed to be accurate are set out as a general outline only for guidance and do not constitute any part of an offer or contract. Intending purchasers should not rely on them as statements of representation of fact, but must satisfy themselves by inspection or otherwise as to their accuracy. No person in this firms employment has the authority to make or give any representation or warranty in respect of the property.