



## Flat 2 4 High Street

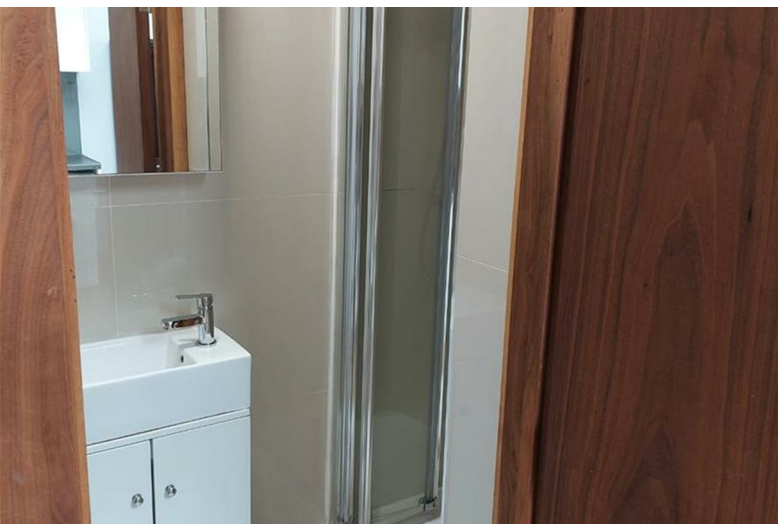
, Slough, SL1 1EE

**£1,100 Per month**





# Flat 2 4 High Street



## Description

Council Tax and water included.

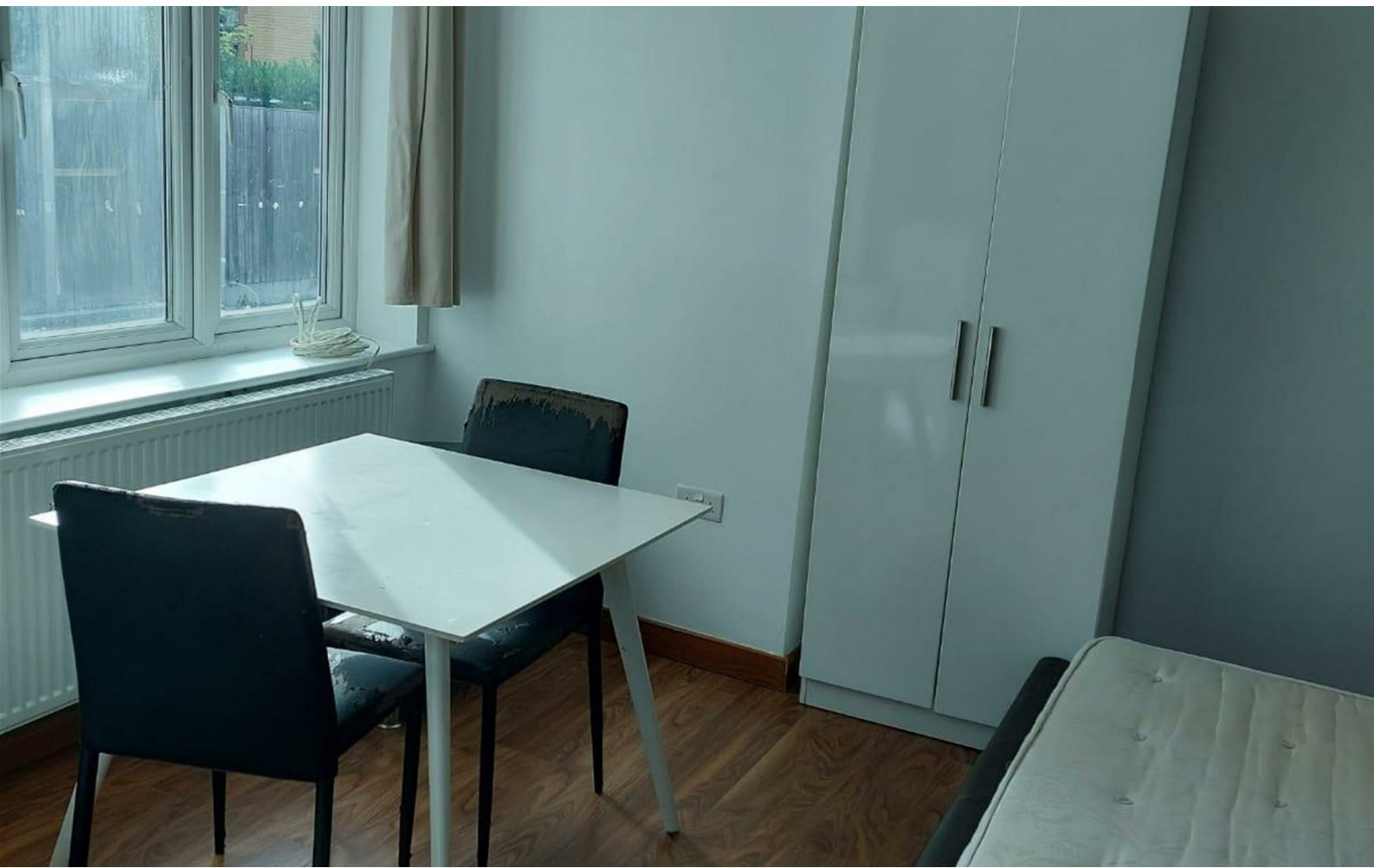
Conveniently located within walking distance to Slough train station and from Slough town centre, this large studio apartment comprises of good sized entrance hall, ample storage, modern bathroom with walk in shower and kitchen.

With fast access trains to Waterloo and Paddington (15mins). The M4 and M25 are also within easy reach, this property is perfect for commuters.

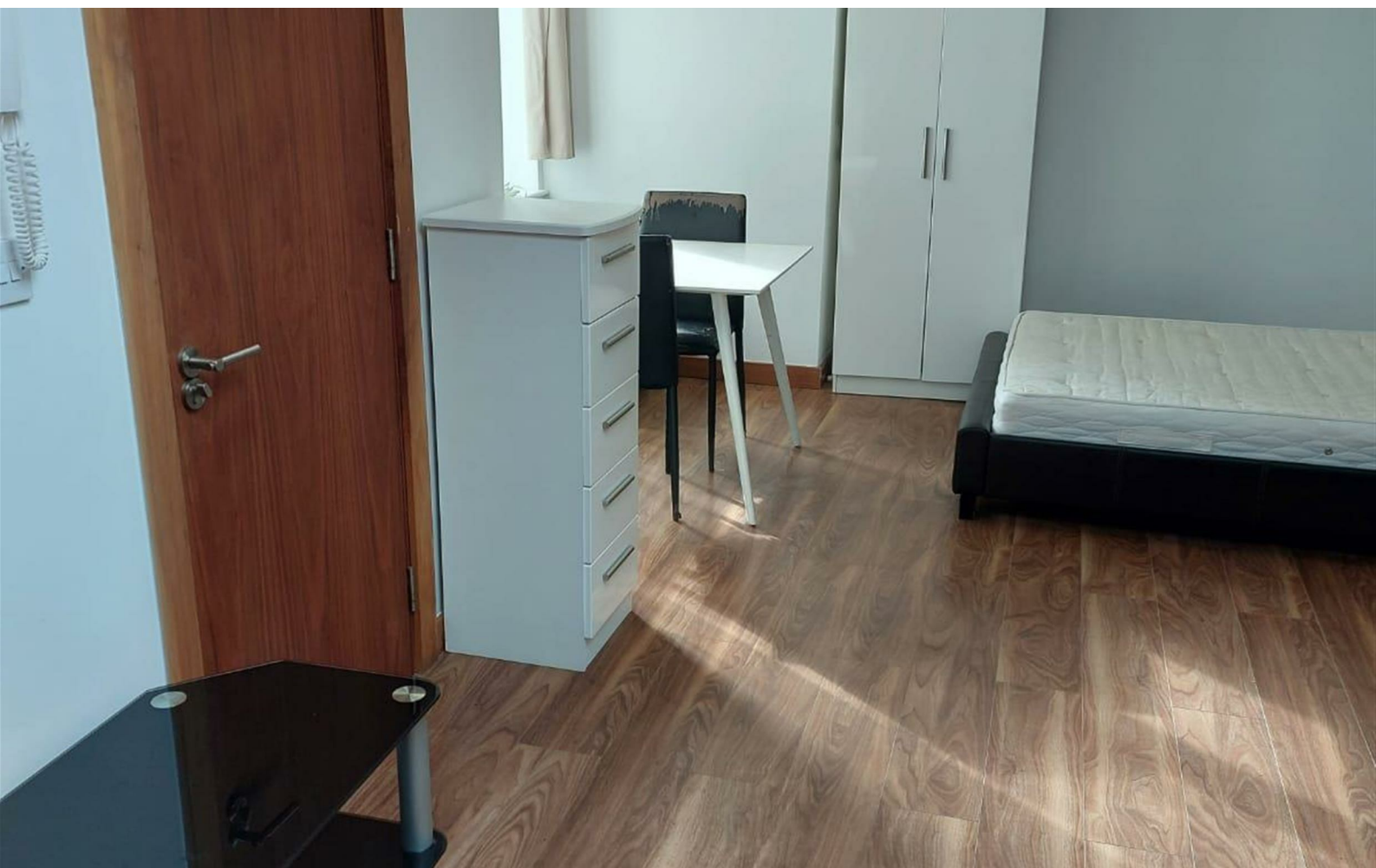
This spacious modern studio flat also benefits from being a short walk from local supermarkets, restaurants and Herschel Park & nature reserve.

This Studio flat is available immediately.

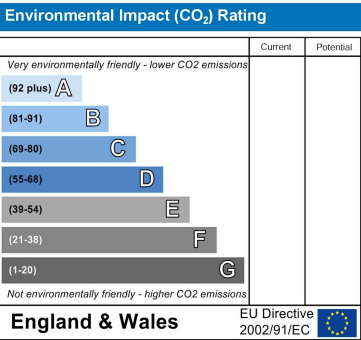
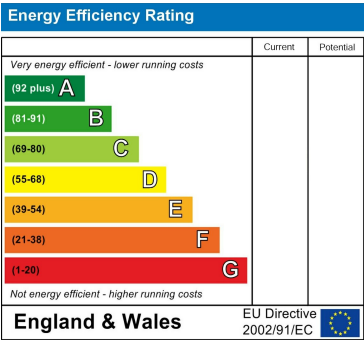
- Available immediately - Viewings Saturday 14th October
- 0.4 miles from Slough train station
- Open plan living
- Unfurnished
- All bills included - excluding gas and electricity
- Excellent transport links
- Ensuite shower room
- No parking







Floor Plan



Viewing

Please contact our Head Office Office on 03333444385 if you wish to arrange a viewing appointment for this property or require further information.

These particulars, whilst believed to be accurate are set out as a general outline only for guidance and do not constitute any part of an offer or contract. Intending purchasers should not rely on them as statements of representation of fact, but must satisfy themselves by inspection or otherwise as to their accuracy. No person in this firms employment has the authority to make or give any representation or warranty in respect of the property.

