



Hadley Grange | Church Langley | Harlow | CM17 9PH

£1,350 Per Month

 clarknewman



Hadley Grange | Church Langley  
Harlow | CM17 9PH  
£1,350 Per Month

AN IMMACULATE FULLY FURNISHED ONE BEDROOM SPLIT LEVEL MAISONETTE benefitting from two allocated parking spaces. The property comprises of a spacious entrance hall, modern fitted kitchen with a range of wall and base units featuring integrated appliances and large lounge with Juliet balcony. The first floor offers a generously sized double bedroom with fitted wardrobes and a family bathroom suite. The property is available late July. This is a non-smoking property and the landlord does not allow pets.

- One Bedroom
- Available NOW
- Council Tax Band: B
- Split Level Maisonette
- Immaculate Condition
- EPC Rating: D

#### Front

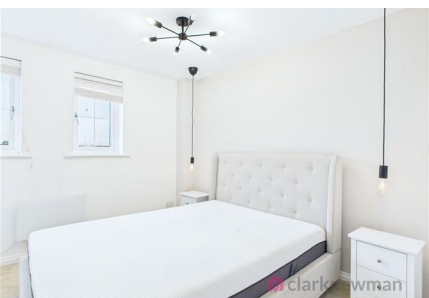
Two allocated parking spaces to rear.

#### Entrance Hall

5'6 x 6'0 (1.68m x 1.83m)

Spacious entrance hall with UPVC double glazed window and radiator to wall. Internal doors to kitchen and lounge. Stairs to first floor.





### Kitchen

8'4" x 6'5" (2.54m x 1.96m)

Modern fitted kitchen with a range of wall and base units featuring integrated oven and hob with extractor fan above, fridge freezer and washing machine.

### Lounge

10'8" x 9'7" (3.25m x 2.92m)

Immaculately presented lounge with ample dining space. Further benefits include UPVC double glazed Juliet balcony and radiator to wall.

### Landing

8'3" x 6'1" (2.51m x 1.85m)

Large landing area with Velux window and internal doors to double bedroom and bathroom suite.

### Bedroom

10'4" x 9'7" (3.15m x 2.92m)

Generously sized double bedroom with dual aspect UPVC double glazed windows, radiator to wall and an abundance of fitted wardrobes.

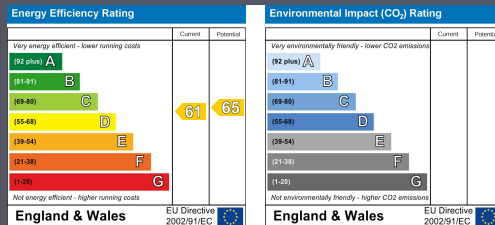
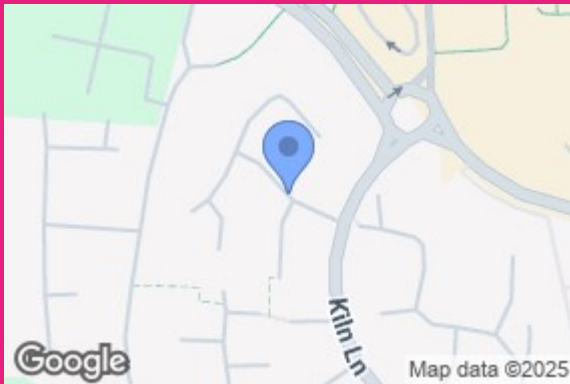
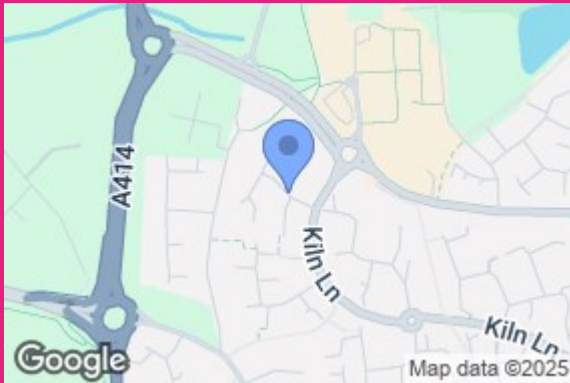
### Bathroom

5'5" x 6'2" (1.65m x 1.88m)

Luxury fitted family bathroom suite offering bath with shower, vanity sink and toilet. Velux window and chrome heated towel rail to wall. Extractor fan.

### More Info

Hadley Grange is located in the popular Church Langley development and is situated within walking distance to local amenities and schooling.



Equity House  
4-6 Market Street  
Harlow  
Essex  
CM17 0AH  
01279 400444  
hello@clarknewman.co.uk