



**Burgess Gardens
Newport Pagnell, MK16 0NT
£320,000**

Nestled in the charming area of Burgess Gardens, Newport Pagnell, this beautifully presented two-bedroom semi-detached house is an excellent opportunity for first-time buyers or investors alike. The property boasts a well-designed layout, featuring a welcoming reception room that provides a perfect space for relaxation and entertaining.

The two bedrooms are generously sized, offering ample room for comfortable living. The house also includes a re-fitted shower room, which adds a modern touch to the home. One of the standout features of this property is the private rear garden, providing a tranquil outdoor space for gardening, leisure, or simply enjoying the fresh air.

Additionally, the property comes with a detached garage located in a block, offering convenient storage or parking options. With no upper chain, this home is ready for you to move in without delay.

This delightful residence must be viewed to fully appreciate its charm and potential. Don't miss out on the chance to make this lovely house your new home.

Entrance

Lounge

12'1" x 14'1" (3.69m x 4.31m)



Bedroom 2

9'9" x 8'7" (2.99m x 2.64m)



Kitchen/Diner

12'1" 8'1" (3.70m 2.47m)

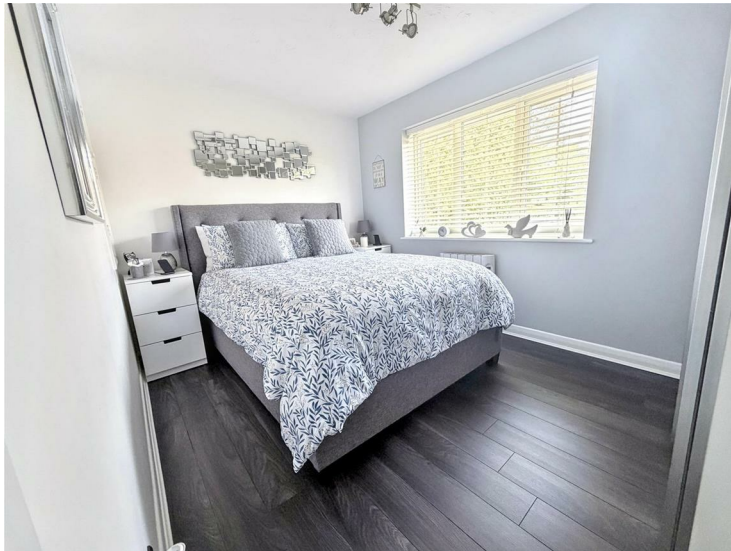


Shower Room



Main Bedroom

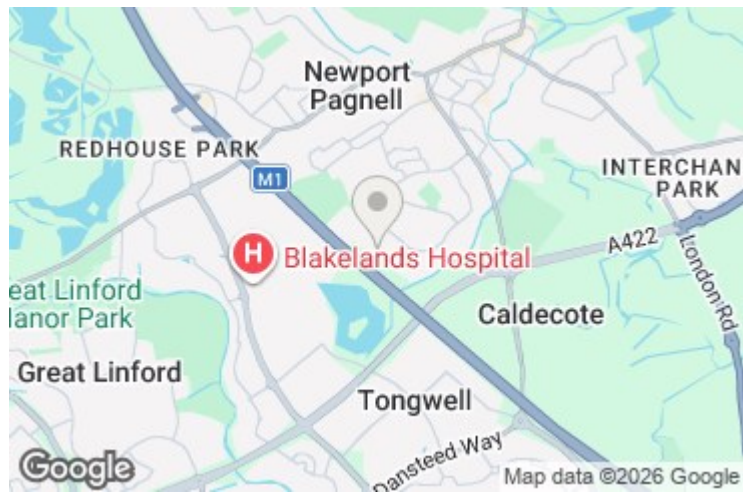
12'5" x 8'4" (3.79m x 2.56m)



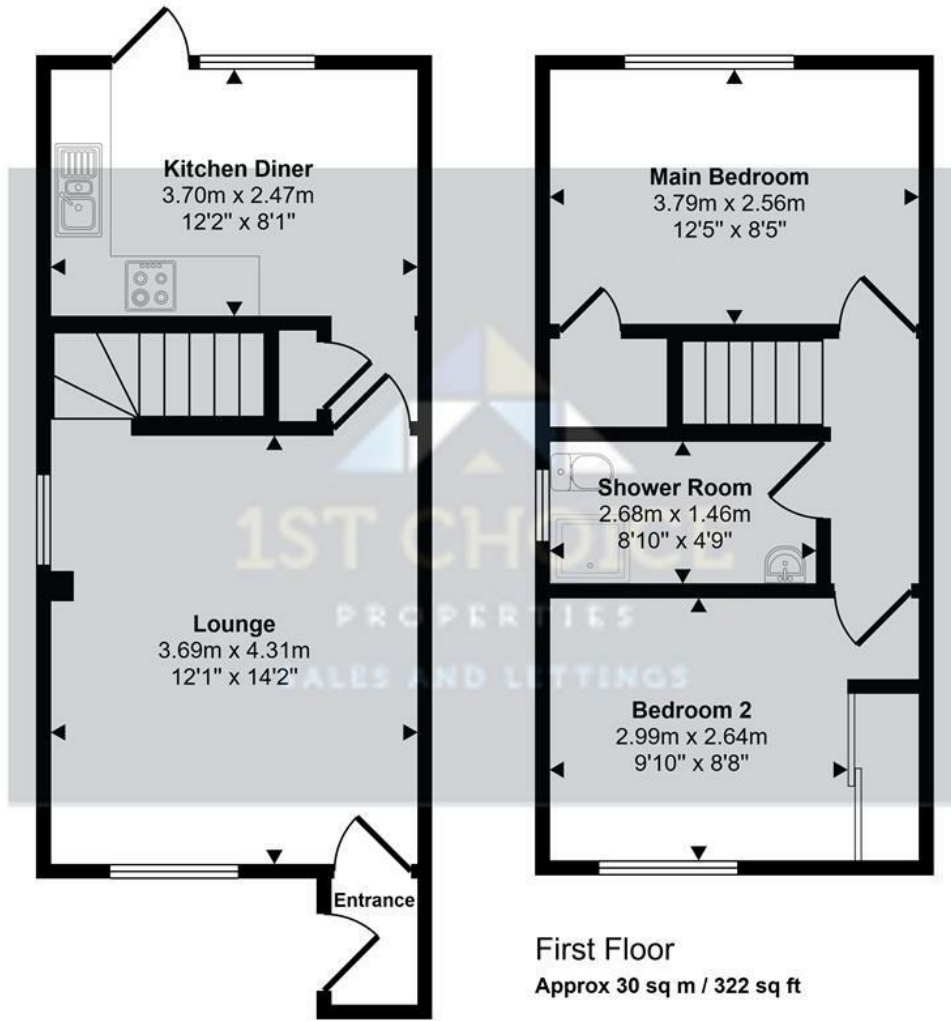
Rear Garden



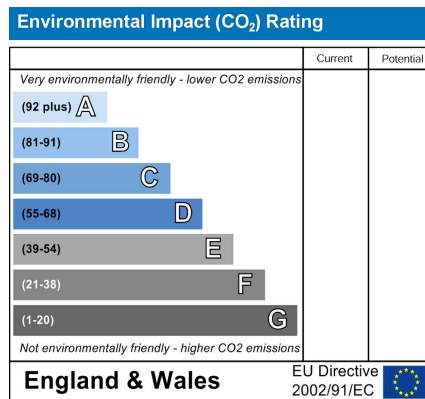
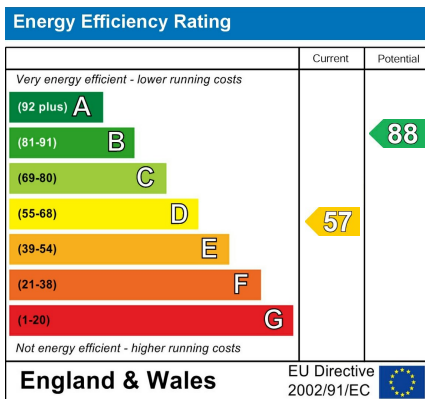
Garage



Approx Gross Internal Area
61 sq m / 653 sq ft



This floorplan is only for illustrative purposes and is not to scale. Measurements of rooms, doors, windows, and any items are approximate and no responsibility is taken for any error, omission or mis-statement. Icons of items such as bathroom suites are representations only and may not look like the real items. Made with Made Snappy 360.



www.1stchoice-properties.co.uk