



19 Chapel Street

Cheadle, Stoke-On-Trent, ST10 1DU

£550 Per month



1



1

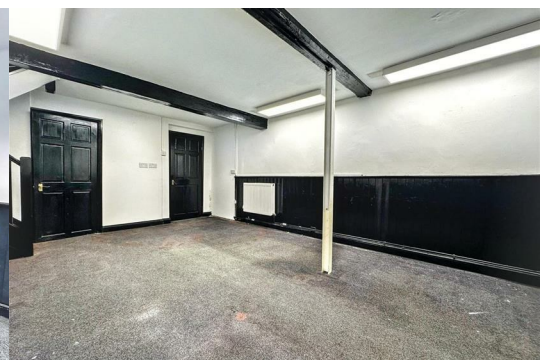


3



CALL US TO ARRANGE A VIEWING 9AM - 9PM 7 DAYS A WEEK!

GUIDE PRICE - £90,000 - £115,000



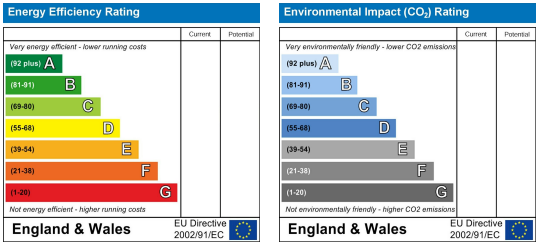
- Shop Space 10'11" x 12'1" (3.35 x 3.69)
- Office Space 11'7" x 18'9" (3.55 x 5.72)
- Store Room 3'10" x 6'10" (1.19 x 2.10)
- Kitchen 11'0" x 5'10" (3.37 x 1.78)
- First Floor – Flat Space
- Kitchen Living Space 12'0" x 18'7" (3.67 x 5.68)
- Bedroom 10'10" x 12'0" (3.32 x 3.67)
- Inner Hall
- Shower Room 5'10" x 6'11" (1.78 x 2.12)

Area Map



Floor Plans

Energy Efficiency Graph



These particulars, whilst believed to be accurate are set out as a general outline only for guidance and do not constitute any part of an offer or contract. Intending purchasers should not rely on them as statements of representation of fact, but must satisfy themselves by inspection or otherwise as to their accuracy. No person in this firms employment has the authority to make or give any representation or warranty in respect of the property.