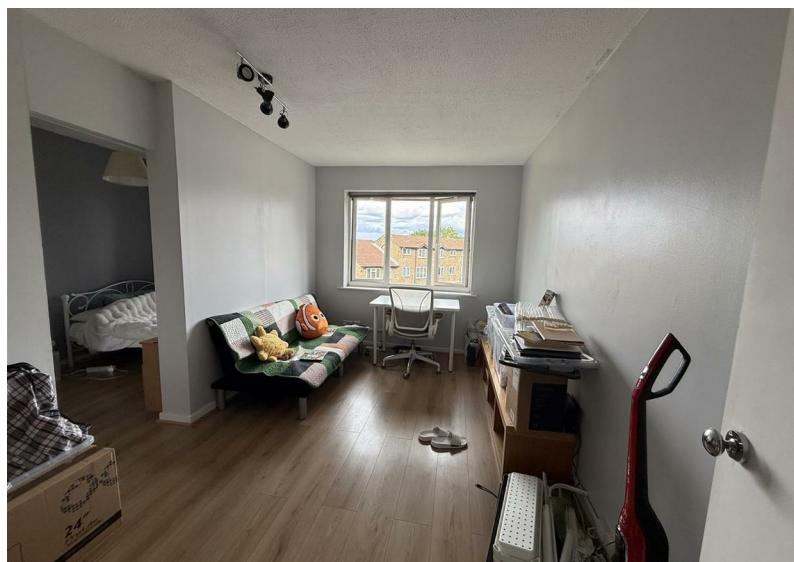




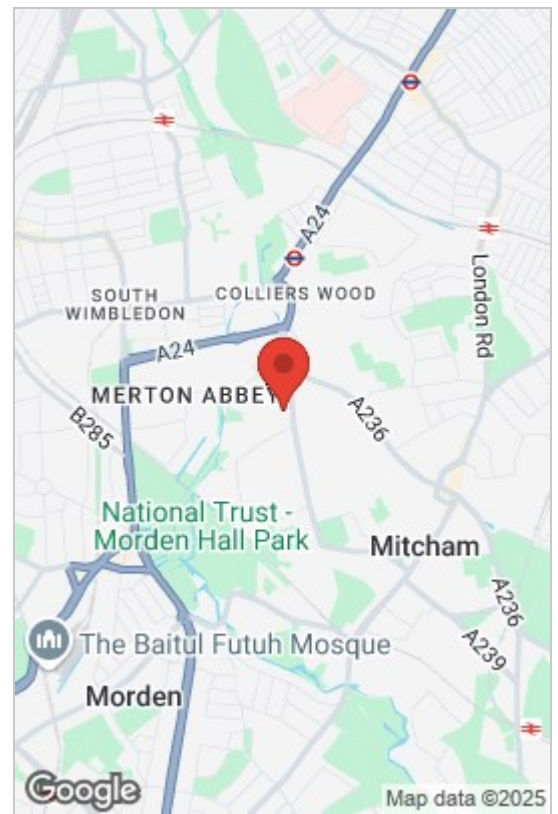
## Hogarth Crescent, London, SW19 2DW

£1,495 Per Calendar Month

 1  1  1  D





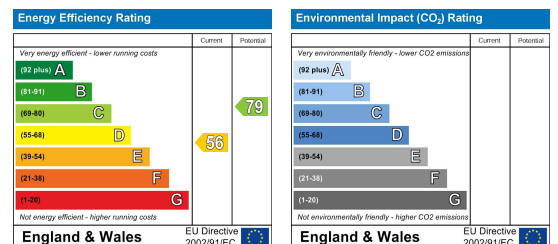


- 1 Bedroom
- Fitted kitchen
- Shower Room
- Allocated Parking Space
- Quiet Location
- Lounge
- Washer/Dryer
- Laminated Wood Flooring
- Close to the Tandem Centre
- Top Floor

This is a well presented top floor 1 bedroom flat in an excellent location close to shops and transport links, including the Northern Line Tube. The property has a well fitted kitchen with appliances including a washer/dryer and fridge/freezer, lounge with sofa, bedroom with bed and wardrobe, bathroom with shower cubicle and there is hard finished flooring throughout. There is also allocated off street parking.



Council Tax Band: B



These particulars, whilst believed to be accurate are set out as a general outline only for guidance and do not constitute any part of an offer or contract. Intending purchasers should not rely on them as statements of representation of fact, but must satisfy themselves by inspection or otherwise as to their accuracy. No person in this firm's employment has the authority to make or give any representation or warranty in respect of the property.