



28 Park Road

Worsbrough, Barnsley, S70 5AJ

Price Guide £99,500

 2
  1
  1
  D



28 Park Road

Worsbrough, Barnsley, S70 5AJ

Price Guide £99,500



Lounge

12'2" x 12'8" (3.73 x 3.87)

Kitchen Dining Room

12'2" x 11'9" (3.73 x 3.60)

Bedroom One

12'8" x 12'2" (3.87 x 3.73)

Bedroom Two

6'11" x 13'4" (2.13 x 4.08)

Bathroom

4'9" x 9'5" (1.47 x 2.89)

Storage Cellar

Outside

Key Features

Charming Period Property

Built circa 1900, this terraced house retains character and charm while offering a practical layout suited to modern living.

Comfortable Living Space – 721 sq ft

Thoughtfully arranged to maximise space and comfort, ideal for individuals, couples, or small families.

Inviting Lounge Area

A well-proportioned reception room perfect for relaxing evenings, entertaining guests, or creating a cosy retreat.

Two Generously Sized Bedrooms

Both bedrooms offer ample space for rest, storage, or even a home office setup, allowing flexibility to suit your lifestyle.

Modern Bathroom

Positioned for easy access, the bathroom adds to the home's overall functionality and comfort.

Prime Location on Park Road

Situated on a prominent and well-connected road, offering excellent access to shops, schools, and public transport.

Close to Nature & Leisure Spots

Just moments from the Trans Pennine Trail and Worsbrough Reservoir, perfect for walking, cycling, and enjoying the outdoors.

Ideal for First-Time Buyers

A manageable size, great location, and inviting features make this an excellent entry point onto the property ladder.

Strong Investment Potential

With its desirable location and appealing layout, this property also presents a sound opportunity for long-term value or rental income.

Book a Viewing

If you would like to book a viewing of this property please call one of our property advisors on 01226 771333 Monday to Friday between 9am to 5pm or visit www.psbarnsley.co.uk

Thinking of selling?

If you are thinking of selling your home or just curious to discover the value of your property, The Property Shop would be pleased to provide free, no obligation sales and marketing advice.

The Property Shop, 208 Barnsley Road, Cudworth
Barnsley, S72 8UJ



Road Map



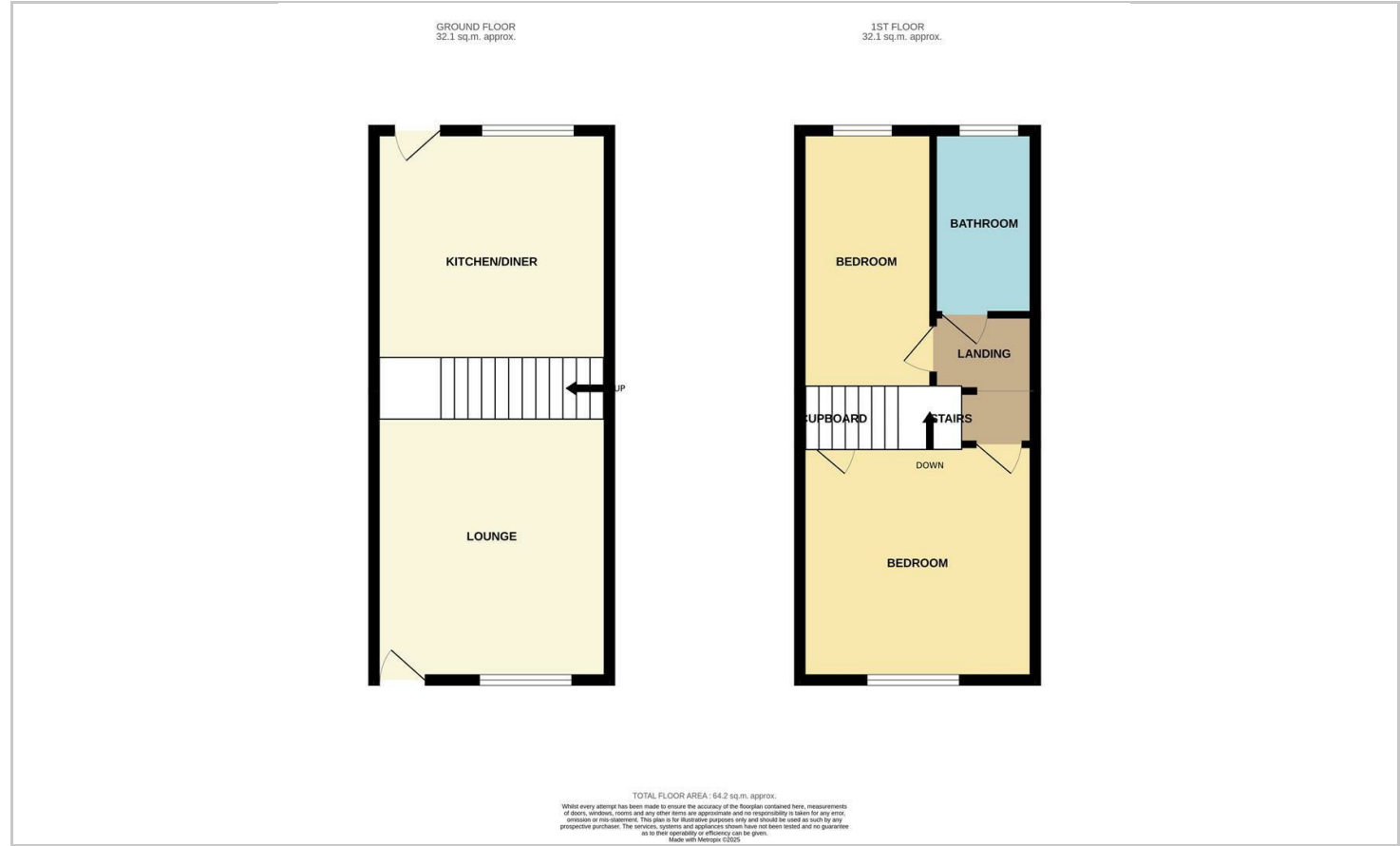
Hybrid Map



Terrain Map



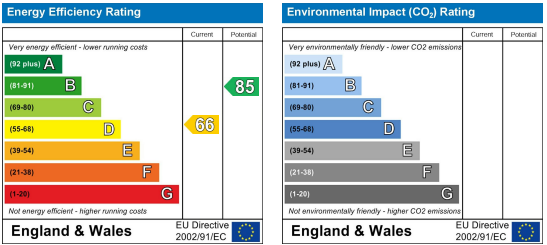
Floor Plan



Viewing

Please contact our TPS Barnsley Office on 01226 771333 if you wish to arrange a viewing appointment for this property or require further information.

Energy Efficiency Graph



These particulars, whilst believed to be accurate are set out as a general outline only for guidance and do not constitute any part of an offer or contract. Intending purchasers should not rely on them as statements of representation of fact, but must satisfy themselves by inspection or otherwise as to their accuracy. No person in this firms employment has the authority to make or give any representation or warranty in respect of the property.

