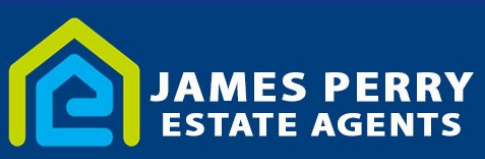
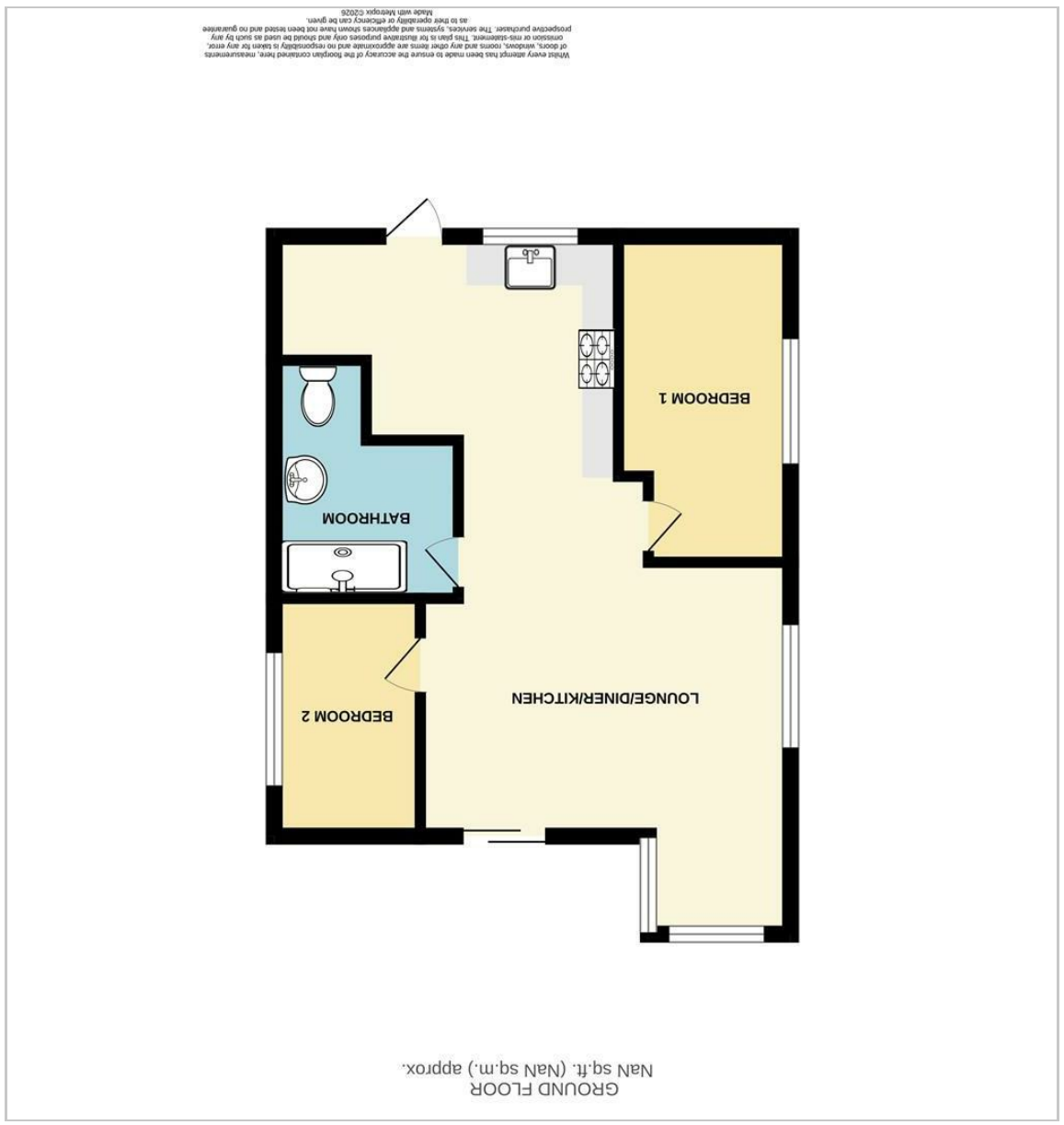


29 Catamaran Yacht Club, Marine
 Water On Sea, Sheerness, ME12 2BX
 Asking price £65,000



Floor Plan



GROUND FLOOR
 Nan sq.ft. (Nan sq.m.) approx.

Area Map



Energy Efficiency Graph

England & Wales	
EU Directive 2002/91/EC	
Very energy efficient - lower running costs	A (81-91)
Energy efficient - lower running costs	B (61-80)
Decent energy efficiency - lower running costs	C (51-60)
Below average energy efficiency - higher running costs	D (41-50)
Below average energy efficiency - higher running costs	E (31-40)
Poor energy efficiency - higher running costs	F (21-30)
Very poor energy efficiency - higher running costs	G (1-20)

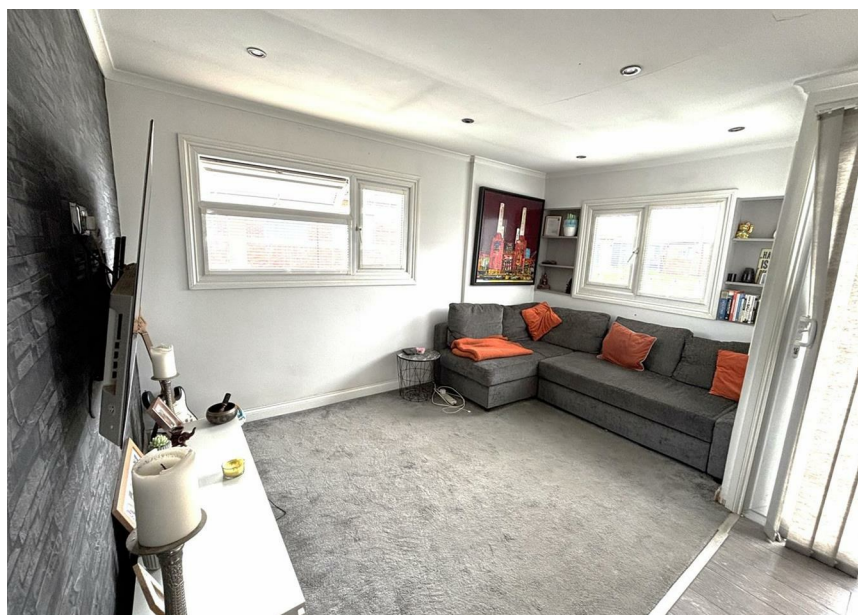
England & Wales	
EU Directive 2002/91/EC	
Very environmentally friendly - lower CO2 emissions	A (92 plus)
Environmentally friendly - lower CO2 emissions	B (81-91)
Decent environmental friendliness - lower CO2 emissions	C (69-80)
Below average environmental friendliness - higher CO2 emissions	D (55-68)
Below average environmental friendliness - higher CO2 emissions	E (39-54)
Poor environmental friendliness - higher CO2 emissions	F (21-38)
Very poor environmental friendliness - higher CO2 emissions	G (1-20)

Viewing

Please contact our Isle of Sheppey Office on 01795 666 666 if you wish to arrange a viewing appointment for this property or require further information.

These particulars, whilst believed to be accurate are set out as a general outline only for guidance and do not constitute any part of an offer or contract. Intending purchasers should not rely on them as statements of representation of fact, but must satisfy themselves by inspection or otherwise as to their accuracy. No person in this firm's employment has the authority to make or give any representation or warranty in respect of the property.

29 Catamaran Yacht Club, Marine Parade,



- Two-Bedroom Chalet Sold Fully Furnished
- Bright and Airey Living Space
- Convenient Access To Sheerness High Street, Local Amenities, and Transport Links
- Council Tax Band A
- 10 Month Occupancy, Lease to 2044
- Modern Decor Throughout
- Attractive Views Over The Boating Canal And Lake
- Wrap around Decking
- Stones Throw From The Beach
- Ground Rent £2000 Per Annum

Description

£65,000 Asking Price

Situated at Catamaran Yacht Club, this beautifully refurbished two-bedroom detached chalet offers an exceptional coastal retreat within a highly sought-after waterside setting. Positioned on a plot within the Catamaran Yacht Club, the property enjoys a prime location just moments from the gated beach access, as well as overlooking the nearby boating canal and lake. The setting provides a peaceful environment with the added benefit of stunning sunrise views across the water.

The chalet has been decorated to a high standard throughout with a bright and aired open plan lounge and kitchen and two bedrooms with good sized double bedroom master and a modern bathroom with a shower. Council Tax Band A.

This property is subject to a 10-month occupancy agreement, permitted from March to December annually, making it perfectly suited as a holiday home or coastal getaway. The lease runs until 2044, £2000 ground rent, per annum and Catamaran Yacht Club £25 one off membership required on joining. Conveniently located a short drive from Sheerness High Street, the property offers easy access to a range of local shops, amenities, and transport links.

Offered with no onward chain, this is a rare opportunity to acquire a fully refurbished seaside chalet in a desirable waterside location. Some photos are AI generated to support restoration of old photos.

Minster On Sea, Sheerness, ME12 2BX

