

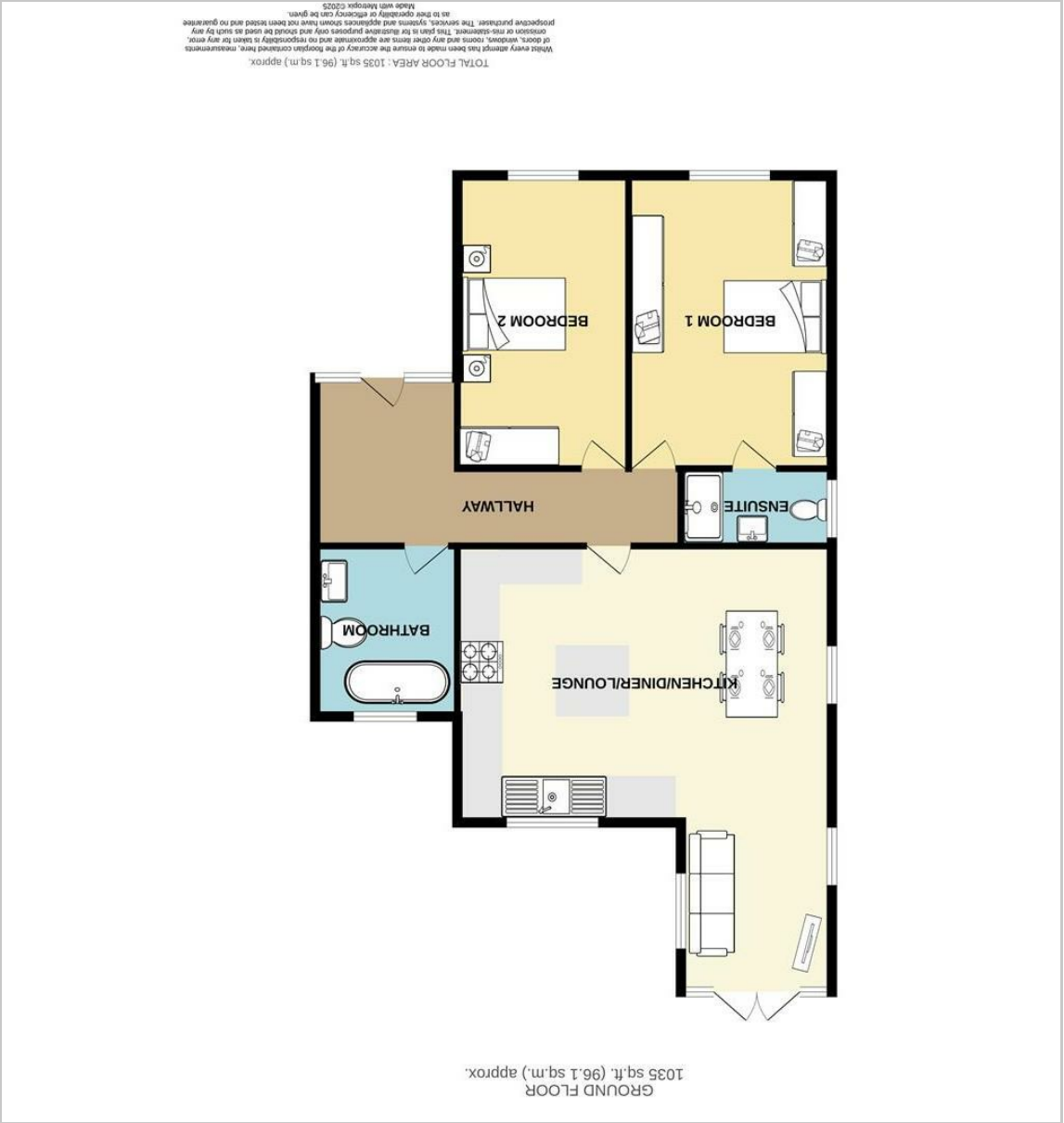


64A Wards Hill Road
Minster On Sea, Sheerness, ME12 2LQ
Asking price £450,000

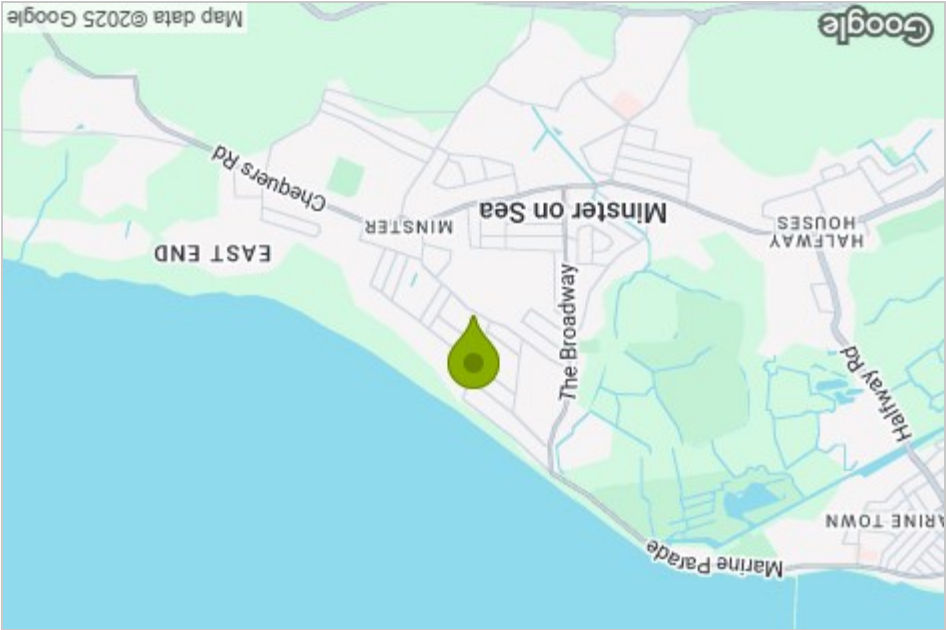
2 2 1 B



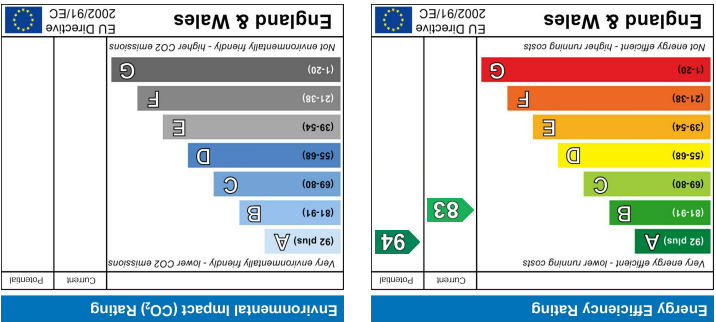
Floor Plan



Area Map



Energy Efficiency Graph



Viewing

Please contact our Isle of Sheppey Office on 01795 666 666 if you wish to arrange a viewing appointment for this property or require further information.

These particulars, whilst believed to be accurate are set out as a general outline only for guidance and do not constitute any part of an offer or contract. Intending purchasers should not rely on them as statements of representation of fact, but must satisfy themselves by inspection or otherwise as to their accuracy. No person in this firm's employment has the authority to make or give any representation or warranty in respect of the property.

James Perry
3 Broadway, Sheerness, Kent, ME12 1AB
Tel: 01795 666 666 Email: sales@james-perry.co.uk www.james-perry.co.uk

64A Wards Hill Road



- 2019 New Build
- Spacious 2 Bed
- Detached Bungalow
- Modern Open Plan Lifestyle Living
- Private Gated Access
- 2 Double Sized Bedrooms With Master En-Suite
- Close To Minster Village Local Shops And Amenities
- In Sought After Minster-On-Sea
- Large Monoblock Driveway For Multiple Cars
- Stone Throw To Blue Flag Beach And The Glen
- Well Maintained Garden And Patio Area
- This Property Is One Not To Be Missed!

Description

Nestled in the desirable area of Minster-On-Sea, this nearly new detached bungalow on Wards Hill Road offers a perfect blend of modern living and coastal charm. Built in 2019, this spacious two-double bedroom property, with its modernized en suite, is designed for those who appreciate an open plan lifestyle, making it ideal for both relaxation and entertaining.

As you enter, you are greeted by a bright and airy hallway reception that seamlessly flows into the contemporary kitchen and dining area. The layout is perfect for social gatherings or quiet evenings at home. With a well appointed main bathroom and En Suite, convenience and comfort are at the forefront of this home.

The exterior of the property boasts a large mono- block driveway, providing ample space for multiple vehicles, along with private gated access for added security and peace of mind. The bungalow is just a stone's throw away from the stunning Blue Flag beach, allowing you to enjoy the beauty of the coastline at your leisure. Additionally, the nearby Glen offers picturesque walks and a tranquil setting for outdoor activities. The garden is well maintained and has a lovely patio area perfect for summer barbeques.

This property is not just a home; it is a lifestyle choice, offering the perfect retreat in a sought-after location. Whether you are looking to downsize, invest, or simply enjoy the benefits of a modern bungalow by the sea, this property is sure to impress. Don't miss the opportunity to make this delightful bungalow your own.

Minster On Sea, Sheerness, ME12 2LQ

