

Grenville Court, Blacketts Wood Drive, Chorleywood, WD3 5PZ £435,000 SHARE OF FREEHOLD

- THREE SPACIOUS BEDROOMS
- FLEXIBLE LIVING ACCOMODATION
- CONTEMPORARY KITCHEN
- GARAGE IN BLOCK

Situated in this highly sort after development the property is a three bedroom, first floor purpose built flat providing bright, flexible and spacious accommodation.

Benefits include fitted kitchen, double glazing, wooden floors and garage en block

Externally, the property benefits from off-street parking, own garage and communal gardens. The development is also within close proximity to local shops and Chorleywood Metropolitan/mainline station, Junction 17 of the m25 and excellent local primary and secon dary schools.



This share of freehold property is situated in the desirable location of Grenville Court, Blacketts Wood Drive, Chorleywood.

The property is well presented throughout and has a light and airy feel due to large windows and good-sized rooms. The accommodation comprises entrance hallway, living room, fully fitted kitchen with integrated appliances, principal bedroom with built-in wardrobe, second bedroom with built-in wardrobe, third bedroom and spacious family bathroom.

The property has many benefits including residents parking and a garage in block.

Situated within 0.3 miles of Chorleywood Metropolitan Line Station.

ENTRANCE Front door with side screen. Entry into communal hallway. Stairs to first floor.

ENTRANCE HALL Front door leading into entrance hall with door to lounge/dining room. With double glazed into to front, wood floor. Multi-paned door leading to Bedroom 3/Study

LIVING ROOM 17' 0" x 13' 11" (5.18m x 4.24m) Double glazed windows extending a cross front wall. Panel radiator. Multi-paned door to Reception/Bedroom 3



KITCHEN/BREAKFAST ROOM 12' 6" x 7' 5" (3.81m x 2.26m) Modern suite comprising single drainer stainless sink unit with mixer tap. Range of white wall and base units with concealed lighting and ample work surfacing areas. Inset 4 ring gas hob with oven under and extractor hood over. Plumbing for washing machine. Space for fridge freezer. Part tiled walls. Double glazed window to rear. Wood floor. Space for breakfast table.



BEDROOM 11' 2' 6" x 9' 4" (3.81m x 2.84m) Double glazed window to rear. Built-in wardrobes. Panel radiator



BEDROOM 2 17' 7" x 9' 2" (5.36m x 2.79m) Double glazed window to front. Built in wardrobes. Radiator. Dressing table unit with drawers to side.

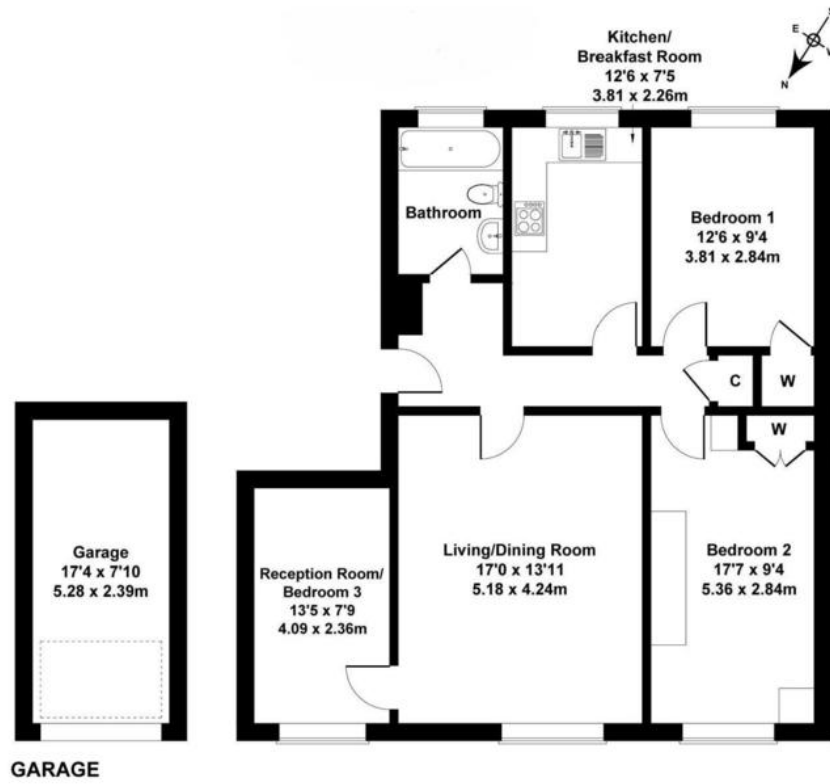
BEDROOM 3/RECEPTION 13' 5" x 7' 9" (4.09m x 2.36m) Double glazed window to front. Wooden floor. Panel radiator.

BATHROOM White suite comprising panelled bath with mixer tap and shower unit with glazed screen. Pedestal wash hand basin. Low flush w/c. Double glazed window to rear. Part tiled walls. Wood floor.

REAR Communal gardens with large communal patio area.

GARAGE 17' 4" x 7' 10" (5.28m x 2.39m) Up and over door.





17 Clarendon Road, Watford,
Hertfordshire, WD17 1JR

www.rennieandco.com
01923 221265
info@rennieandco.com

Agents Note: Whilst every care has been taken to prepare these sales particulars, they are for guidance purposes only. All measurements are approximate are for general guidance purposes only and whilst every care has been taken to ensure their accuracy, they should not be relied upon and potential buyers are advised to recheck the measurements