

- ENORMOUS PROPERTY
- THREE DOUBLE BEDROOMS
- CLOSE TO SCHOOLS
- TOP FLOOR APARTMENT

## Grenville Court, Blacketts Wood Drive, Chorleywood. £450,000 - SHARE OF FREEHOLD

AN ENORMOUS AND VERY RECENTLY MODERNISED THREE DOUBLE BEDROOM TOP FLOOR APARTMENT WITH THE LIVING ROOM SEPARATE TO THE KITCHEN AND ACCESS TO A HUGE BOARDED LOFT SPACE.

The accommodation comprises a spacious sitting/dining room, separate kitchen, family bathroom, 3 double bedrooms, all with built-in wardrobes, with all rooms off an usually large central hallway.

Externally, the property benefits from off-street parking, ITS OWN GARAGE WITH LIGHT AND POWER and communal gardens. The development also within close proximity to Chorleywood Metropolitan/mainline station, Junction 17 of the m25 and excellent local primary and secondary schools



AN ENORMOUS THREE DOUBLE BEDROOM TOP FLOOR APARTMENT WITH THE LIVING ROOM SEPERARATE TO THE KITCHEN AND ACCESS TO A HUGE BOARDE LOFT SPACE. The accommodation comprises a spacious sitting/dining room, separate kitchen, family bathroom, 3 double bedrooms, all with built-in wardrobes, with all rooms off an usually large central hallway.

Externally, the property benefits from off-street parking, ITS OWN GARAGE WITH LIGHT AND POWER and communal gardens. The development is also within close proximity to Chorleywood Metropolitan/mainline station, Junction 17 of the m25 and excellent local primary and secondary schools

#### COMMUNAL ENTRANCE FOYER

LOUNGE 17' 4" x 15' 6" (5.28m x 4.72m) Very spacious room with a floor to ceiling window facing the front.

#### STAIRS TO SECOND FLOOR

KITCHEN 11' 3" x 8' 5" (3.43m x 2.57m) Modern kitchen. Solid wood work surfaces with cream fronted wall and base units. Tile surrounds. Sink unit overlooking the window with swan neck mixer tap. Gas cooker point and stainless steel extractor hood over. Space for ridge freezer. space and plumbing for washing machine. Window to front.

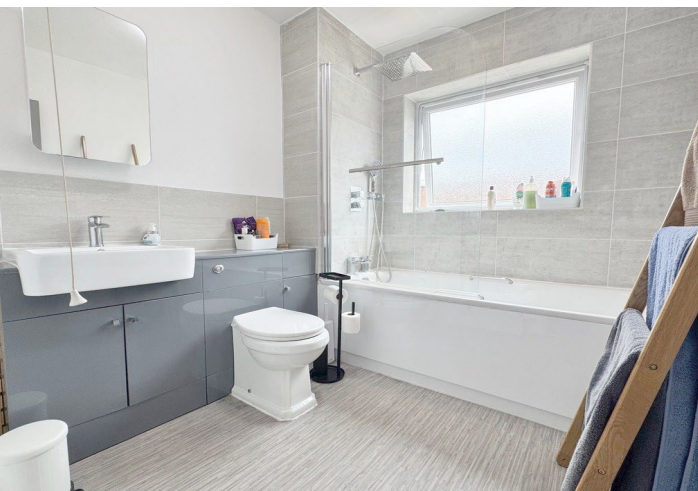
BEDROOM 1 16' 4" x 10' 2" (4.98m x 3.1m) Built in wardrobes. Window to rear.

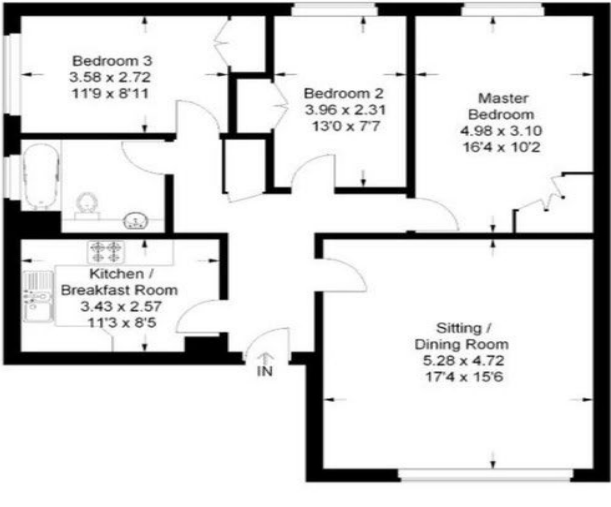
BEDROOM 2 13' 0" x 7' 7" (3.96m x 2.31m) Window to rear

BEDROOM 3 11' 9" x 8' 11" (3.58m x 2.72m) Window to front.

BATHROOM Very modern suite comprising inset WC with built in wall mounted sink. Tiled walls. Full sized paneled bath with glass screen and plumbed in shower. Window.







17 Clarendon Road, Watford,  
Hertfordshire, WD17 1JR

[www.rennieandco.com](http://www.rennieandco.com)  
01923 221265  
[info@rennieandco.com](mailto:info@rennieandco.com)

Agents Note: Whilst every care has been taken to prepare these sales particulars, they are for guidance purposes only. All measurements are approximate are for general guidance purposes only and whilst every care has been taken to ensure their accuracy, they should not be relied upon and potential buyers are advised to recheck the measurements