



- DETACHED BUNGALOW WITH SCOPE
- EXCELLENT PLOT
- SPACIOUS ROOM DIMENSIONS
- DETACHED GARAGE

## 6 Maple Grove, Watford, WD17 4JZ

We offer to the market this character filled detached bungalow occupying (what we believe) to be the largest plot on Maple Grove, which in turn is an extremely quiet cul-de-sac within a short distance of highly-regarded schools, shopping and transport facilities.

This delightful property offers extremely flexible accommodation with immense scope for extension if required and the property itself would benefit with some general updating.





## Property Description

**LIVING ROOM** 17' 0" x 11' 8" (5.18m x 3.56m) Double glazed sliding patio doors onto the rear garden. Further double glazed window over garden. Double radiator.

**DINING ROOM** 9' 4" x 9' 3" (2.84m x 2.82m) Double glazed window to rear. double radiator.

**KITCHEN** 9' 3" x 9' 3" (2.82m x 2.82m) Modern kitchen comprising range of built in wall and base units, door to exterior with leaded light window. Large window overlooking rear garden, Built in double oven. Plumbing for washing machine. Shelving.

**BEDROOM 1** 17' 10" x 12' 0" (5.44m x 3.66m) Spacious double room with large double glazed window facing rear. Door to -  
**ENUSUITE VANITY ROOM INCLUDING WC. AND WASH HAND BASIN.**

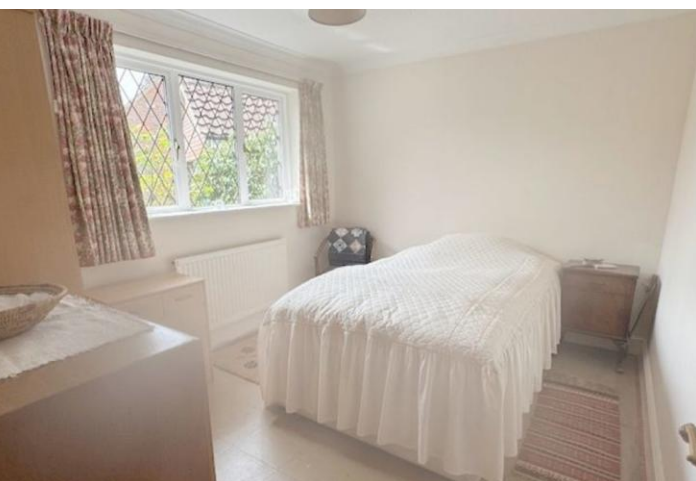
**BEDROOM 2** 12' 0" x 9' 3" (3.66m x 2.82m) Double bedroom with large window facing the front.

**FAMILY BATHROOM Suite** comprising panelled bath, low flush WC. Pedestal wash hand basin. Tiled walls.

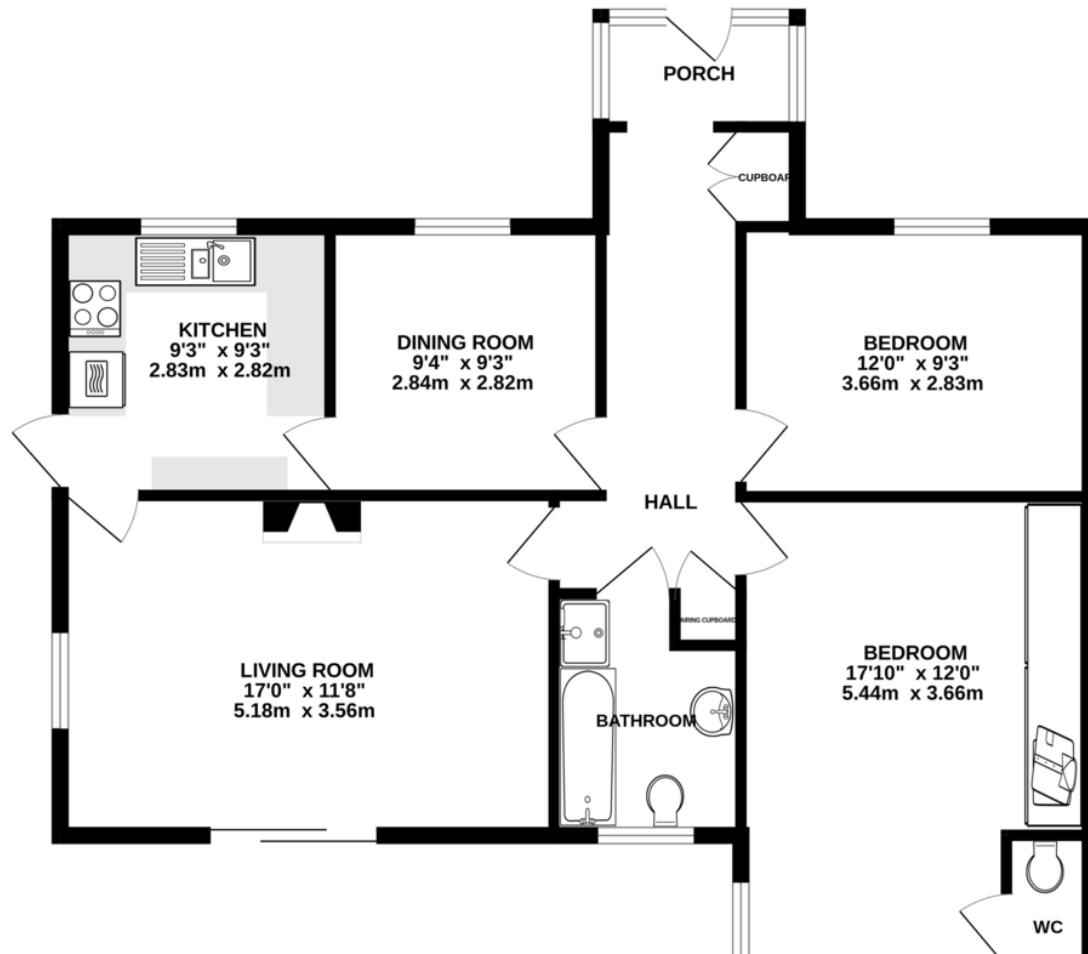
**GARDEN** Extremely generous plot comprising various areas of lawn, shrubs, hard standing and floral displays.







GROUND FLOOR  
860 sq.ft. (79.9 sq.m.) approx.



%epcGraph\_c\_1\_334%

17 Clarendon Road, Watford,  
Hertfordshire, WD17 1JR

www.rennieandco.com  
01923 221265  
info@rennieandco.com

Agents Note: Whilst every care has been taken to prepare these sales particulars, they are for guidance purposes only. All measurements are approximate are for general guidance purposes only and whilst every care has been taken to ensure their accuracy, they should not be relied upon and potential buyers are advised to recheck the measurements