



6. Wiltshire Drive, Congleton, CW12 1NX

Asking Price £265,000

Offered for sale with NO ONWARD CHAIN!

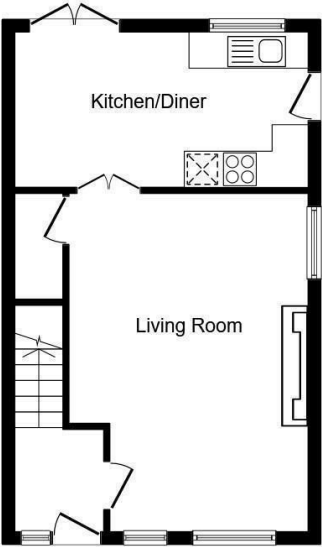
Situated in the ever-popular Lower Heath area of Congleton, 6 Wiltshire Drive is a striking semi-detached family home occupying a generous plot and offering well-balanced, flexible accommodation across three floors. With three bedrooms and a converted loft space, this home is perfect for growing families, homeworkers or those simply needing more space.

Step inside and you're greeted by a welcoming entrance hall that opens into a spacious living room — light-filled and inviting — flowing through to a well proportioned dining kitchen that's perfect for entertaining or busy family life. Upstairs, three comfortable bedrooms are served by a stylish family bathroom, and the converted loft with a bathroom adds yet another dimension — ideal as a guest suite, office, or teenager's retreat.

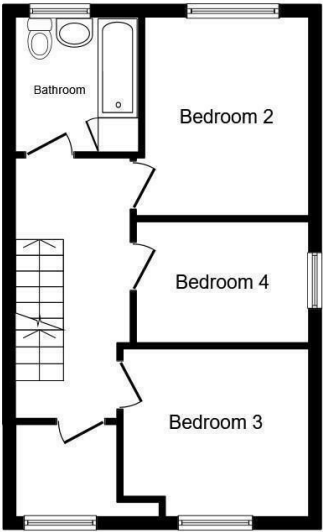
Outside, the generous plot helps to set this home apart. A wide block-paved driveway offers ample off-road parking in front of a detached garage, while the rear garden offers ample space for outdoor entertaining.

The location is just as appealing — with reputable primary and secondary schools within walking distance, shops and supermarkets nearby, and excellent road links connecting you quickly to the town centre, Macclesfield, and the wider Cheshire region.

Floor Plan



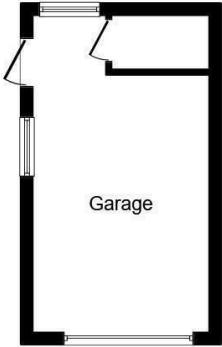
Ground Floor



First Floor

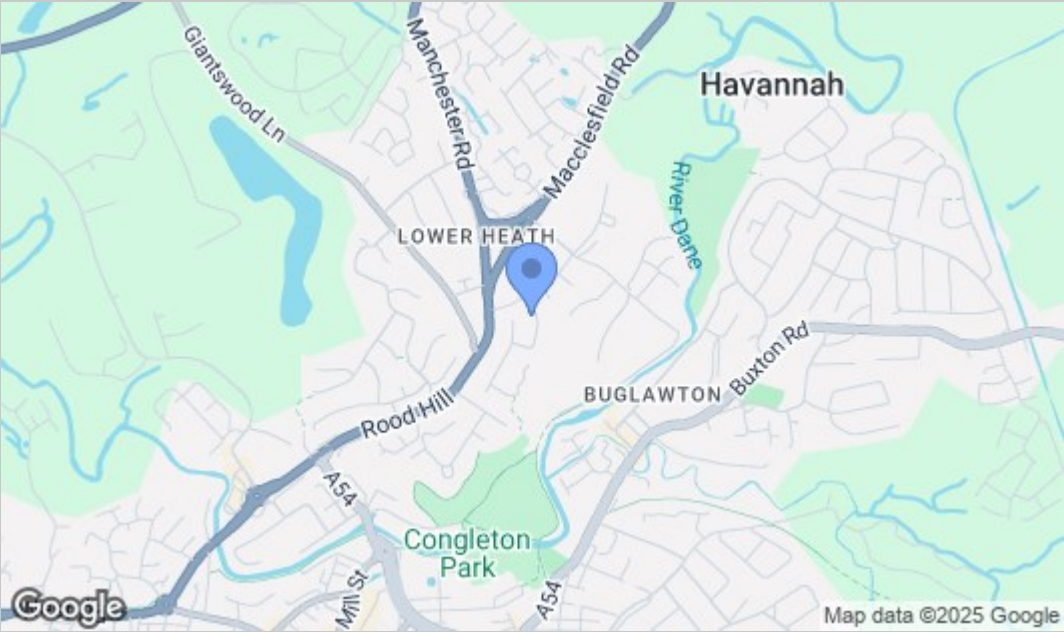


Second Floor

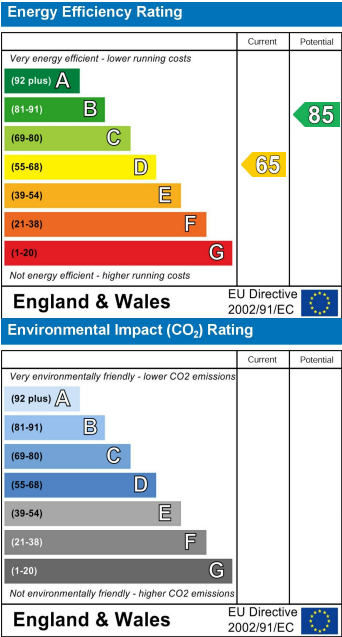


Garage

Area Map



Energy Efficiency Graph



NOTICE Chris Hamriding Lettings & Estate Agents for themselves and for the vendor or lessors of this property whose agents they are given notice that: (i) the particulars are set out as a general outline only for the guidance of intending purchasers or lessees, and do not constitute, nor constitute part of, an offer of contract, (ii), all descriptions, dimensions, references to condition and necessary permissions for use and occupation, and other details are given in good faith and are believed to be correct but any intending purchasers or tenants should not rely on them as statement or representation of fact but must satisfy themselves by inspection or otherwise as to the correctness of each of them, (iii) no person in the employment of Chris Hamriding Lettings & Estate Agents has any authority to make or give any representation or warranty whatever in relation to this property.