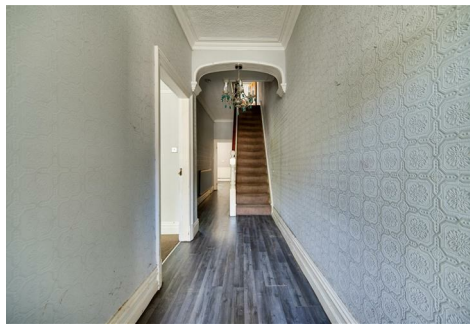
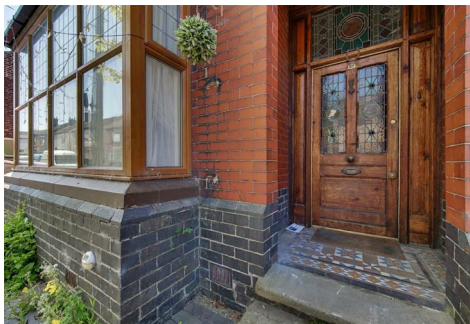


# chris hamriding

lettings & estate agents



## 30 Albert Street, Biddulph, ST8 6DU

### Offers In The Region Of £175,000

Offered for sale with NO ONWARD CHAIN! WATCH THE VIDEO TOUR!!

'Clematis Villa' is a beautiful period residence in an established part of Biddulph just a moments stroll to the shops whilst enjoying a wealth of internal space across both floors! In need of updating and some TLC, we are sure buyers will be attracted to the approx 1760 square feet of internal space! That kind of internal space is usually only seen in homes that cost three times the price!!

There are three large bedrooms and a bathroom to the first floor all accessed from a charming galleried landing whilst downstairs you will find a beautiful storm porch and entrance door with stained glass leading to a Minton tiled entrance hall that gives access to three large reception rooms and the generous kitchen. All of which enjoy characterful feature just waiting to be restored!

Outside you'll find an attractive gated frontage with an enclosed garden to the rear. The area to this side of the house provides unallocated space for a vehicle with plenty of on street parking being nearby.

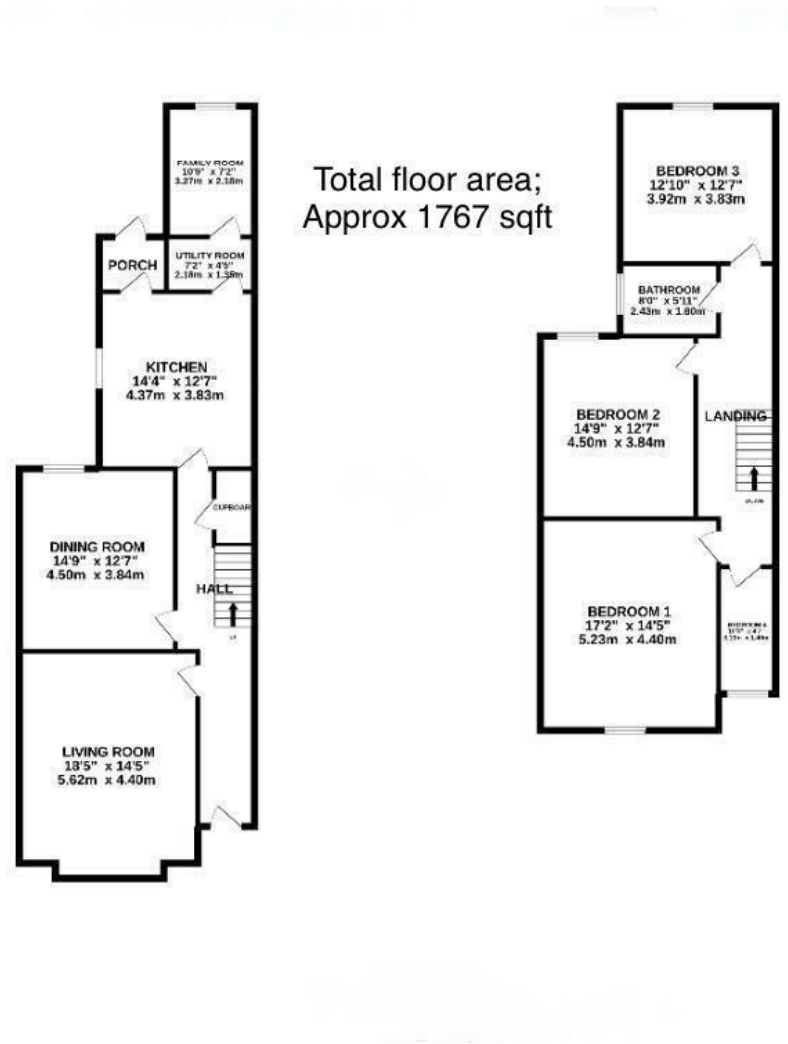
The town centre of Biddulph is just a minutes walk away whilst great commuter links are also within easy reach and plenty of beautiful countryside walks are also a stones throw away!

Don't just take our word for it though...read on to find out more, view our video, photos and floor plan...then call us here at Chris Hamriding Estate Agents to book that all important viewing!

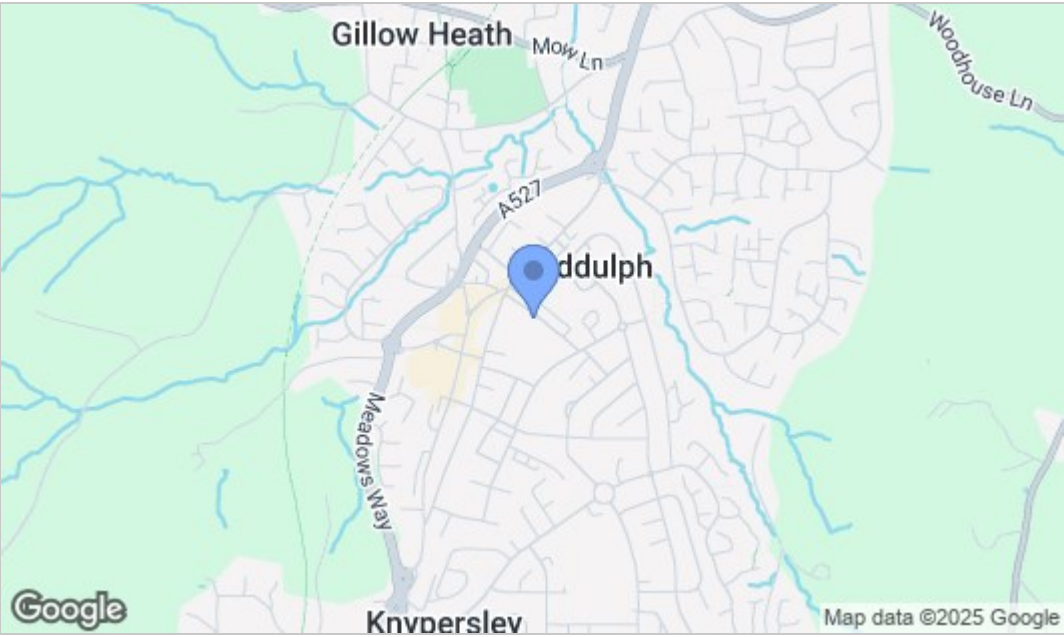




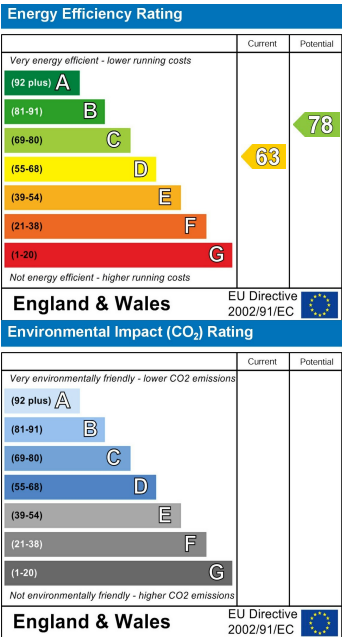
Floor Plan



Area Map



Energy Efficiency Graph



NOTICE Chris Hamriding Lettings & Estate Agents for themselves and for the vendor or lessors of this property whose agents they are given notice that: (i) the particulars are set out as a general outline only for the guidance of intending purchasers or lessees, and do not constitute, nor constitute part of, an offer of contract, (ii), all descriptions, dimensions, references to condition and necessary permissions for use and occupation, and other details are given in good faith and are believed to be correct but any intending purchasers or tenants should not rely on them as statement or representation of fact but must satisfy themselves by inspection or otherwise as to the correctness of each of them, (iii) no person in the employment of Chris Hamriding Lettings & Estate Agents has any authority to make or give any representation or warranty whatever in relation to this property.