



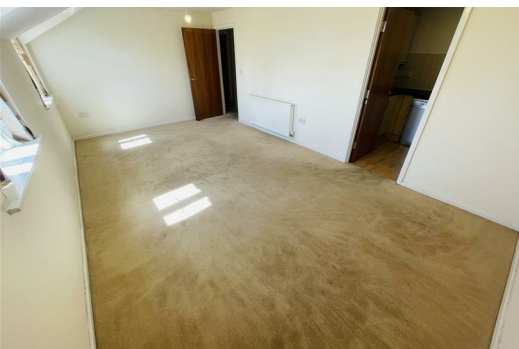
Atholl Court, Stockingford Nuneaton CV10 7HA £795 PCM


Welcome to this charming top-floor flat located at Atholl Court on Heath End Road, CV10 7HA. This delightful property features two well-proportioned bedrooms, making it an ideal choice for couples, small families, or individuals seeking a comfortable living space. The flat boasts a spacious reception room, perfect for relaxing or entertaining guests.


The property includes a modern bathroom, ensuring convenience and comfort for its residents. One of the standout features of this flat is the allocated parking space, providing you with the ease of parking your vehicle securely.

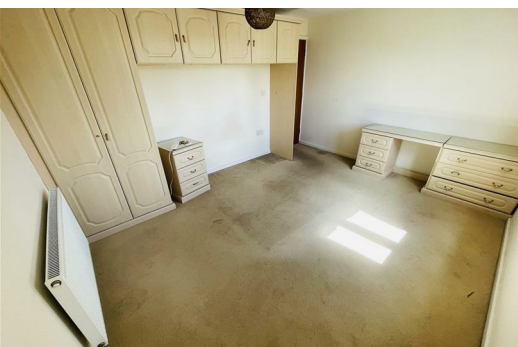
Available for immediate occupancy, this flat offers a wonderful opportunity for those looking to move in without delay. The location is well-connected, making it easy to access local amenities and transport links.

In summary, this top-floor flat at Atholl Court is a fantastic option for anyone seeking a stylish and practical living space in a desirable area. Don't miss the chance to make this lovely flat your new home.



Energy Efficiency Rating		
	Current	Potential
Very energy efficient - lower running costs		
(92 plus) A		
(81-91) B		
(69-80) C		
(55-68) D		
(39-54) E		
(21-38) F		
(1-20) G		
Not energy efficient - higher running costs		
England & Wales	EU Directive 2002/91/EC	

Environmental Impact (CO ₂) Rating		
	Current	Potential
Very environmentally friendly - lower CO ₂ emissions		
(92 plus) A		
(81-91) B		
(69-80) C		
(55-68) D		
(39-54) E		
(21-38) F		
(1-20) G		
Not environmentally friendly - higher CO ₂ emissions		
England & Wales	EU Directive 2002/91/EC	



WWW.POINTONS-GROUP.COM

2 Bond Gate Chambers
NUNEATON
CV11 4AL
024 7637 3300
nuneaton@pointons-group.com

109 New Union Street
COVENTRY
CV1 2NT
024 7663 3221
coventry@pointons-group.com

74 Long Street
ATHERSTONE
CV9 1AU
01827 711911
atherstone@pointons-group.com

