



48 Montacute Road, Morden, SM4 6RL



£550,000

Cromwells
ESTATE AGENTS



48 Montacute Road, Morden, SM4 6RL

Overview

Located on Montacute Road in Morden, this delightful converted four-bedroom house offers a perfect blend of modern living and comfort. Spanning an impressive 1,150 square feet, the property boasts open plan spacious reception rooms, ideal for both relaxation and entertaining. The open-plan layout enhances the sense of space, creating a warm and inviting atmosphere throughout.

The home features two well-appointed bathrooms, including a convenient downstairs shower room, catering to the needs of a busy family. Each of the four bedrooms is generously sized, providing ample room for rest and personalisation.

Outside, the property is complemented by a pretty garden, perfect for enjoying sunny afternoons or hosting gatherings with friends and family. Additionally, off-street parking for two vehicles ensures that you will never have to worry about finding a space.

Location is key, and this house does not disappoint. It is situated close to excellent schools, making it an ideal choice for families. Furthermore, the nearby transport links provide easy access to the wider area, enhancing your commuting experience.

This property is a wonderful opportunity for those seeking a modern family home in a desirable location. With its blend of space, style, and convenience, it is sure to attract interest from discerning buyers. Do not miss the chance to make this lovely house your new home.

48 Montacute Road, Morden, SM4 6RL

Accommodation
Covered entrance
Obscure UPVC double glazed front door to..

Spacious entrance hall
Wood laminate flooring, fitted storage cupboard and under stairs storage.

Lounge/diner
UPVC double glazed windows and patio doors to rear aspect, wood laminate flooring, double panel radiator, coved ceiling.

Kitchen
Range of fitted wall units with matching cupboards and drawers below, granite effect roll top work surfaces with inlaid sink and brushed chrome mixer tap, inlaid gas hob with extra extractor fan above and oven/grill at side, integrated dishwasher, space and plumbing for washing machine, obscure UPVC double glazed window to front aspect, wood laminate flooring, coved ceiling.

Downstairs shower room
Consisting of tiled cubicle with thermostatic shower and hand attachment, wash hand basin with chrome mixer tap, low-level push button flush WC, tiled flooring, tiled walls, extractor fan.

Stairs to 1st floor landing

Bedroom two
UPVC double glazed window to front aspect, single panel radiator, coved ceiling.

Bedroom three
UPVC double glazed window to rear aspect, single panel radiator, coved ceiling.

Bedroom four
UPVC double glazed window to front aspect, double panel radiator.

Bathroom
Consisting of tiled cubicle with thermostatic shower and hand attachment, wash hand basin with chrome mixer tap and storage cupboards below, low-level push button flush WC, tiled flooring, tiled walls, obscure UPVC double glazed window to rear aspect, extractor fan, heated towel rail.

Stairs to 2nd floor

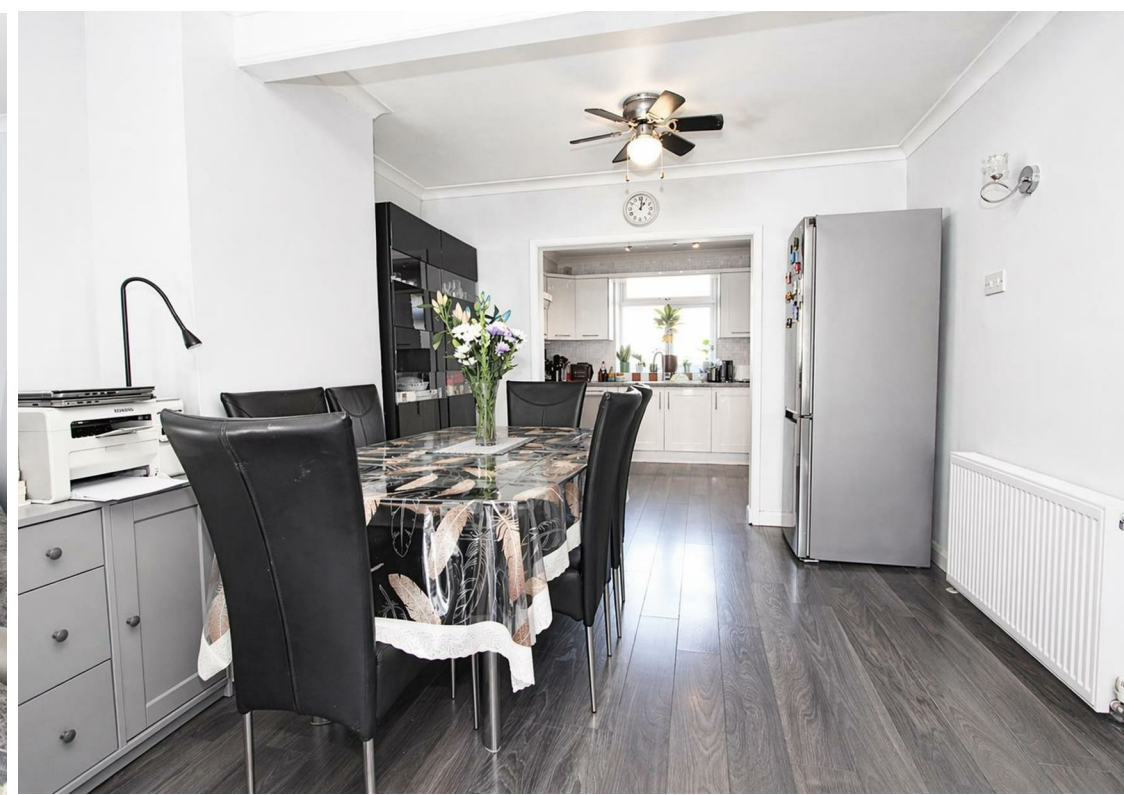
Main bedroom
Velux windows to front aspect, fitted shelving and storage, access to eaves storage, double panel radiator.

Rear garden
Paved patio area and footpath leading to rear, garden shed, raised flower beds at side, fence enclosed, outside tap and power supply.

Front
Paved driveway providing off street parking.

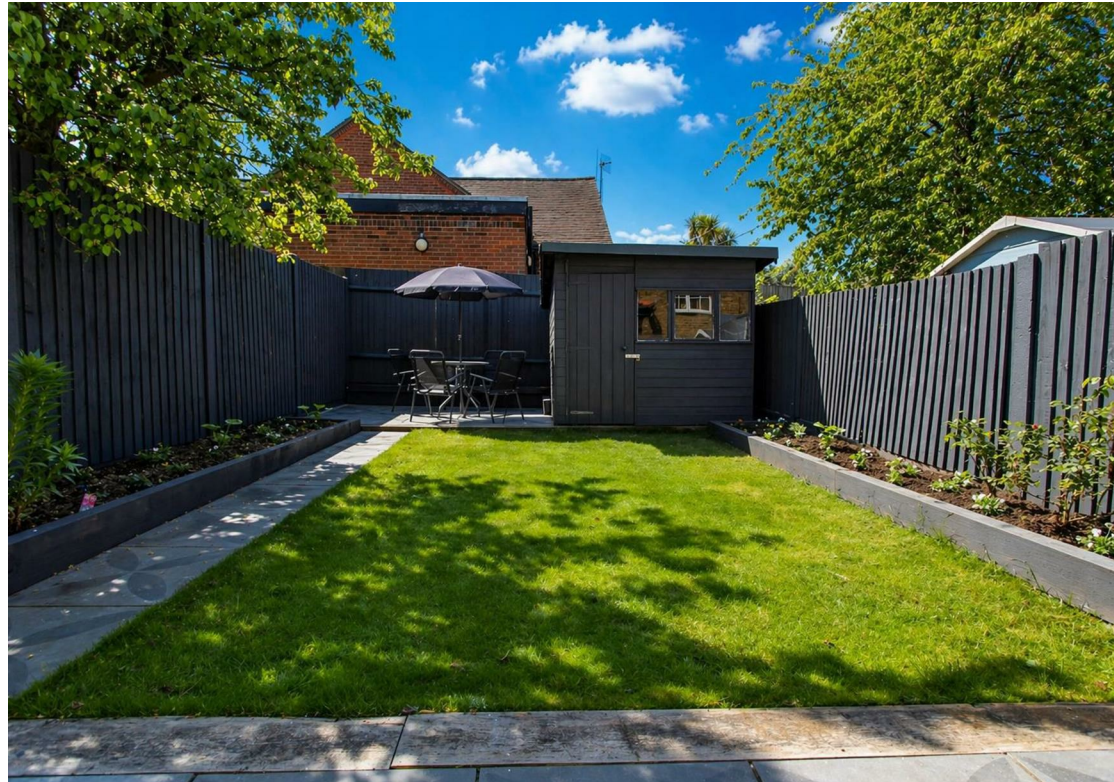
BUYER'S INFORMATION

Under UK law, estate agents are legally required to conduct Anti-Money Laundering (AML) checks on buyers and sellers to comply with regulations. These checks are mandatory, and estate agents can face penalties if they fail to perform them. We use the services of a third party to help conduct these checks thoroughly. As such there is a charge of £36 including vat, per person. Please note, we are unable to issue a memorandum of sale until these checks are complete

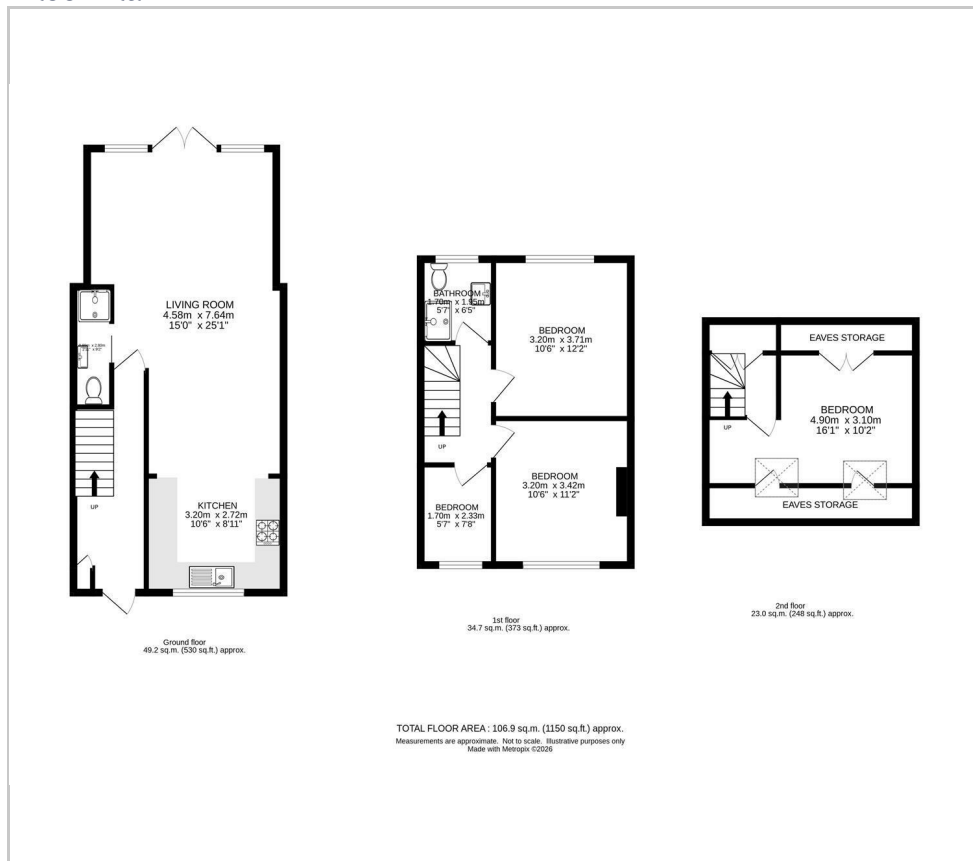




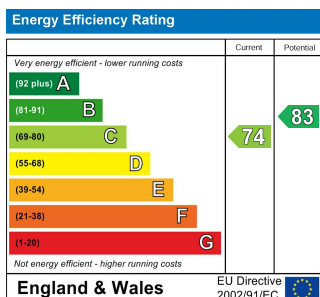




Floor Plan



Area Map



Viewing

Please contact our Cromwells Office on 0208 647 4422 if you wish to arrange a viewing appointment for this property or require further information.

The information provided within these property details has been supplied by the vendor and is intended as a general guide only. Whilst we make every effort to ensure accuracy, we cannot guarantee the completeness or correctness of the information, including but not limited to boundaries, services, installations, or dates of works such as boiler installation. All prospective purchasers should satisfy themselves by inspection, survey, and/or independent enquiries. This information does not form part of any offer or contract, and no reliance should be placed upon it as statements of fact.

These particulars, whilst believed to be accurate are set out as a general outline only for guidance and do not constitute any part of an offer or contract. Intending purchasers should not rely on them as statements of representation of fact, but must satisfy themselves by inspection or otherwise as to their accuracy. No person in this firm's employment has the authority to make or give any representation or warranty in respect of the property.