



4 Embassy Court Shotfield

Wallington, SM6 0JB

Asking price £315,000



4 Embassy Court Shotfield

Wallington, SM6 0JB

CHAIN FREE! A chance to acquire a spacious and rarely available three bedroom first floor apartment, situated in a prime central Wallington location. An ideal purchase for first time buyers, downsizers and investors alike!

This lovely property offers three good sized bedrooms, a modern kitchen/breakfast room, family bathroom, a spacious hall with ample storage and a large reception room with dual aspect windows. There is also the benefit of a security phone entry system, double glazing and a garage en-bloc with well maintained communal grounds.

Embassy Court is ideally located to be close to Wallington town centre and train station with an abundance of shops, amenities and transport links nearby. A viewing is recommended to appreciate the size and space of this superb property.

Accommodation

Entrance Hall

Security phone entry system, built-in cupboard, radiator, three built in storage cupboards

Living Dining Room

Radiator, fitted carpet, double glazed windows to side and rear aspect.

Kitchen

Modern cream gloss fitted kitchen units and drawers, laminate worktop, inset stainless steel sink with chrome





mixer tap, integrated oven microwave/grill, gas hob with chrome extractor hood above, integrated fridge freezer, washing machine, cupboard housing 'Valiant' boiler, tiled splashback, vinyl flooring, double glazed window to front aspect.

Bedroom One

Fitted carpet, radiator, double glazed window to rear aspect

Bedroom Two

Fitted carpet, radiator, double glazed window to rear aspect

Bedroom Three

Radiator, fitted carpet, double glazed window to front aspect

Bathroom

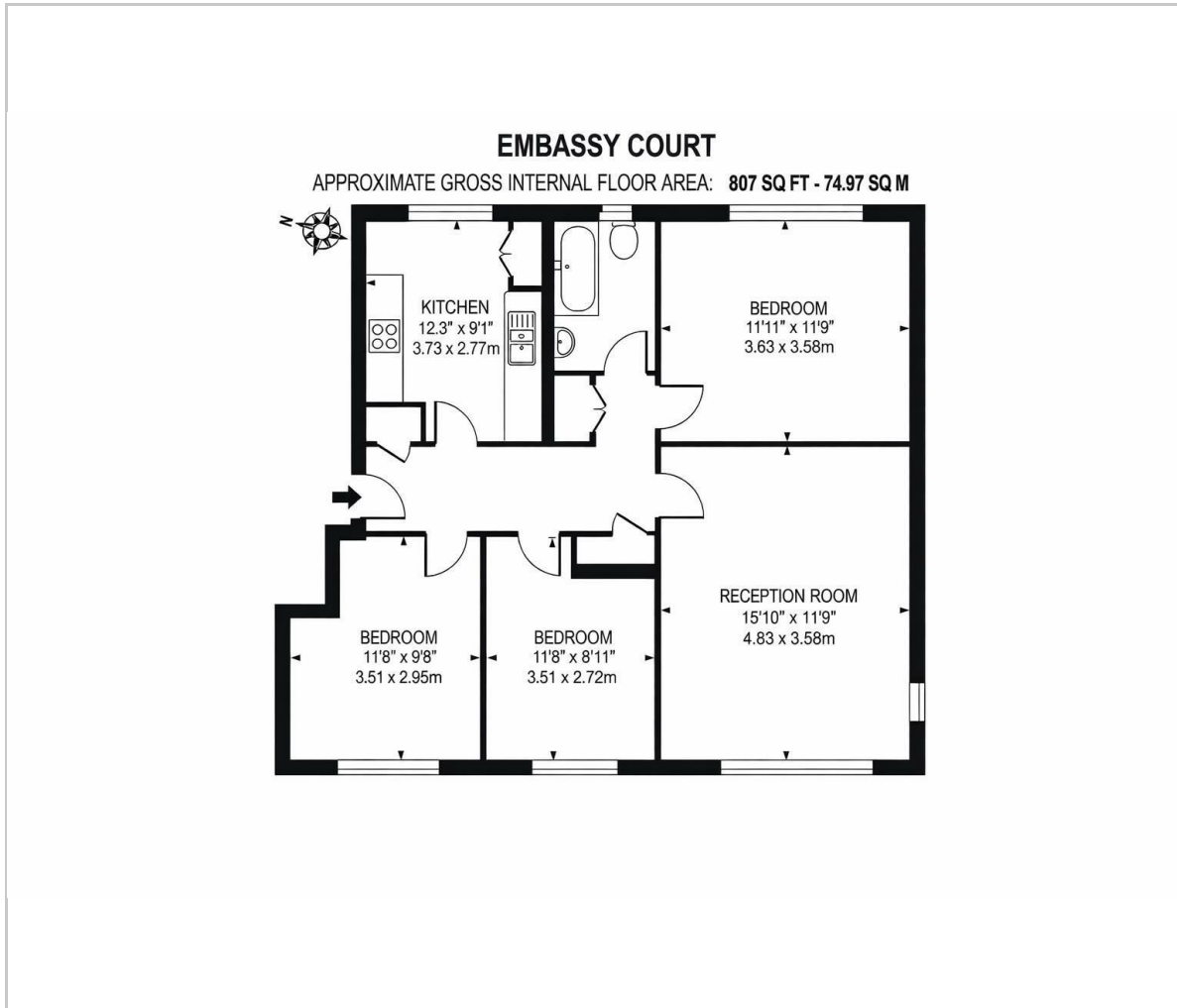
Walk in seated bath with chrome mixer tap and showerhead attachment, WC, vanity wash hand basin with chrome mixer tap and storage below, bidet with chrome mixer tap, radiator, tiled walls, vinyl flooring, double glazed obscure window to front aspect.

Outside

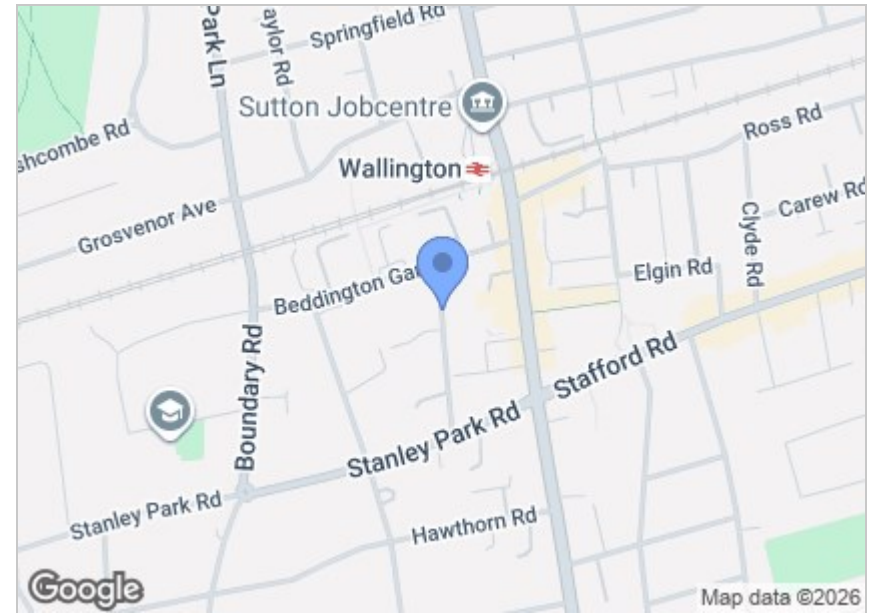
Well kept communal garden and grounds, garage en-bloc



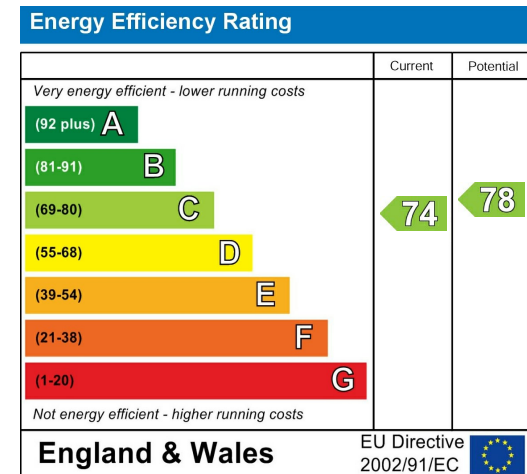
Floor Plan



Area Map



Energy Efficiency Graph



Viewing

Please contact our Cromwells Office on 0208 647 4422 if you wish to arrange a viewing appointment for this property or require further information.

These particulars, whilst believed to be accurate are set out as a general outline only for guidance and do not constitute any part of an offer or contract. Intending purchasers should not rely on them as statements of representation of fact, but must satisfy themselves by inspection or otherwise as to their accuracy. No person in this firm's employment has the authority to make or give any representation or warranty in respect of the property.