



56 Benhill Avenue, Sutton, SM1 4DW



3



1



2

Guide price £585,000

Cromwells
ESTATE AGENTS



56 Benhill Avenue, Sutton, SM1 4DW

NO ONWARD CHAIN Cromwells Wallington are delighted to offer this attractive and spacious three bedroom semi-detached family home with a pretty South-facing rear garden. The property benefits from a modern bathroom, second WC, three good size bedrooms, and a detached garage. High quality "Veka" UPVC double glazed windows are fitted throughout.

A particular feature is the detached double garage, accessed via the property’s rear driveway. This versatile space benefits from power and lighting and could be used for DIY or as a gym, as well as for accommodating vehicles.

Situated near to 'Manor Park Primary' and 'Sutton Grammar' as well as a number of other grammar schools within easy reach, this home is perfect for families seeking quality education for their children. With beautiful local parks in the vicinity, abundant local amenities, the High Street, Sutton rail station and many bus routes just a stone's throw away, convenience is at your doorstep.

Accommodation
Sheltered entrance
Quarry tiled step

Obscure part glazed solid oak wooden front door to..

Spacious entrance to
Obscure UPVC double glazed leaded light window to front aspect, coved ceiling, single panel radiator, under stairs storage cupboard, safe for valuables.

Lounge
UPVC double glazed leaded light bay window to front aspect, single panel radiator, feature fireplace with solid surround, wall lights

Dining room
UPVC double glazed sliding doors to rear aspect, open fireplace, single panel radiator, serving hatch.

Kitchen
Range of "Eggersmann" bespoke fitted wooden wall units with matching cupboards and drawers below, roll top work surfaces with inlaid stainless steel sink and chrome mixer tap, inlaid four ring gas hob with pullout extractor fan above, integrated oven/grill, space and plumbing for washing machine and dishwasher, wood effect flooring, UPVC double glazed windows to rear aspect and door to side.

Stairs to 1st floor landing
Obscure UPVC double glazed leaded light window to side aspect, loft access, picture rail, large walk in airing/storage cupboard with removable shelving unit, housing "Vaillant" combination boiler.

Bedroom one
UPVC double glazed leaded light bay window to front aspect, double panel radiator, coved ceiling.

Bedroom two
UPVC double glazed window to rear aspect, double panel radiator, coved ceiling.

Bedroom three
UPVC double glazed leaded light window to front aspect, single panel radiator.

Bathroom
Luxury "Porcelanosa" tiled suite consisting of large cubicle with "Grohe" chrome thermostatic shower and sliding screen, wash hand basin with "Grohe" chrome mixer tap and vanity unit, mirrored wall cabinet, low level pushbutton flush WC, heated stainless steel towel rail, wood effect flooring, "Icon" extractor fan with timer, obscure UPVC double glazed window to rear aspect.

Separate WC
Consisting of low level pushbutton flush WC, pedestal wash hand basin with "Grohe" chrome mixer tap, stainless steel towel rail, wood effect flooring, part tiled walls with feature mosiacs, obscure UPVC double glazed window to side aspect.

Rear garden (South facing)
Prime south-facing aspect, bathed in sunlight during the day. An enjoyable and inviting space for gardeners, outdoor activities, or for relaxing outside with a barbecue during the warmer months. Paved patio area with footpath leading to rear, mainly laid to lawn with flowerbeds and shrubs bordering, sheltered work / storage shed with power sockets, lighting & lockable access door to rear driveway, fence- enclosed with gated side access, outside tap.

Detached double garage
Accessible via driveway to the rear of property. Steel pitched roof. Generous and versatile space with capacity for cars & motorcycles. Internal & external lighting. Several power sockets to support power tools & appliances, facilitating gardening, projects, vehicle maintenance and more. Integral consumer unit. Up/over door to rear driveway. Additional lockable door to garden.

Front garden
Well kept lawn area with flowerbeds at side and footpath to front, brick wall border with gated access.

BUYER’S INFORMATION
Under UK law, estate agents are legally required to conduct Anti-Money Laundering (AML) checks on buyers and sellers to comply with regulations. These checks are mandatory, and estate agents can face penalties if they fail to perform them. We use the services of a third party to help conduct these checks thoroughly. As such there is a charge of £36 including vat, per person. Please note, we are unable to issue a memorandum of sale until these checks are complete

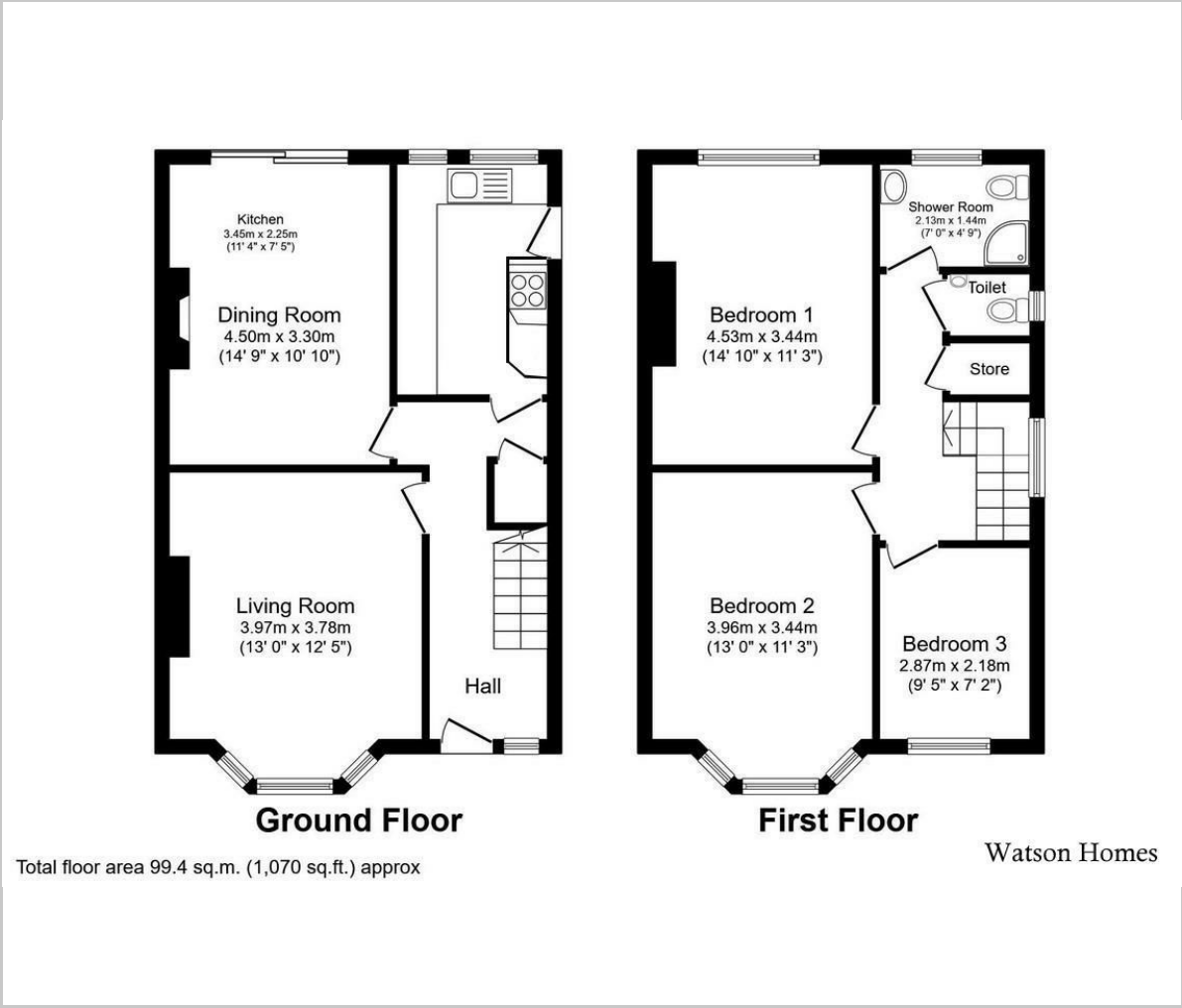








Floor Plan

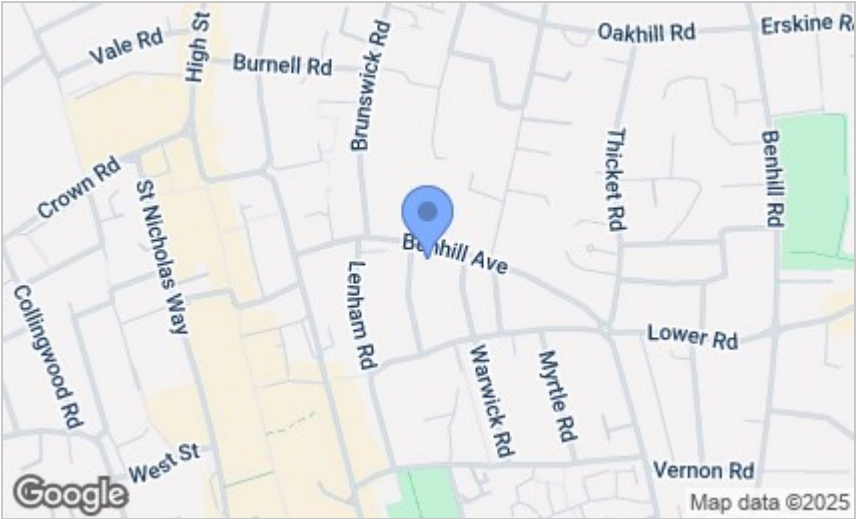


Viewing

Please contact our Cromwells Office on 0208 647 4422 if you wish to arrange a viewing appointment for this property or require further information.

These particulars, whilst believed to be accurate are set out as a general outline only for guidance and do not constitute any part of an offer or contract. Intending purchasers should not rely on them as statements of representation of fact, but must satisfy themselves by inspection or otherwise as to their accuracy. No person in this firms employment has the authority to make or give any representation or warranty in respect of the property.

Area Map



Energy Efficiency Graph

