

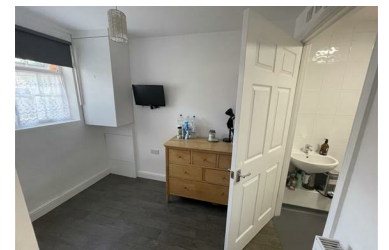


Bray Close, Borehamwood, WD6 5NH

£1,450 Per Calendar Month



A four bedroom two bathroom mid terrace property on a beautiful cul-de-sac on the popular Studio Way development. The property is available for immediate occupation for a long term let.



- Four Bedrooms
- Garden Room
- Allocated Parking
- Kitchen Diner
- Ground Floor Wet Room
- Available Immediately

138 Shenley Road, Borehamwood, Hertfordshire WD6 1EF

Tel: 020 8953 1818 Fax: 020 8953 0808

Email: info@carrington-borehamwood.co.uk Website: www.carrington-borehamwood.co.uk