



32 Broadfield Road, Bristol, BS4 2UQ

£475,000

Detached four-bedroom family home with sunny garden and parking on Broadfield Road

Situated in a popular Bristol neighbourhood, this four-bedroom detached house offers plenty of space for modern family living. The spacious reception room is perfect for relaxing or entertaining, while the bedrooms are generously sized to suit everyone in the household.

Outside, the rear garden enjoys a sunny aspect and provides a lovely spot for outdoor dining, gardening, or simply unwinding. For those who enjoy growing their own produce, the nearby allotments are a real bonus.

Parking won't be a problem, with space for two vehicles, and the area is well served by a selection of local schools, making it a great choice for families. Broadfield Road benefits from a friendly, community-minded atmosphere while still offering easy access into Bristol city centre and surrounding amenities.

This detached home represents a fantastic opportunity for anyone looking for a spacious, well-located family property in a sought-after part of Bristol.

Entrance Hallway



Sitting Room

18'1 x 11'7 (5.51m x 3.53m)



Kitchen/Dining Room

17'8 x 8'9 (5.38m x 2.67m)



Utility Room

10' x 9'1 (3.05m x 2.77m)



W.C

Landing

Bedroom One

15'7 x 10'6 (4.75m x 3.20m)



Bedroom Two

11'4 x 8'6 (3.45m x 2.59m)



Bedroom Three

11'9 x 9'7 (3.58m x 2.92m)



Bedroom Four

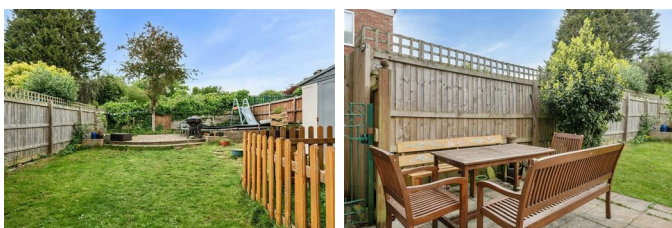
9'9 x 7' (2.97m x 2.13m)



Bathroom



Garden



Garage

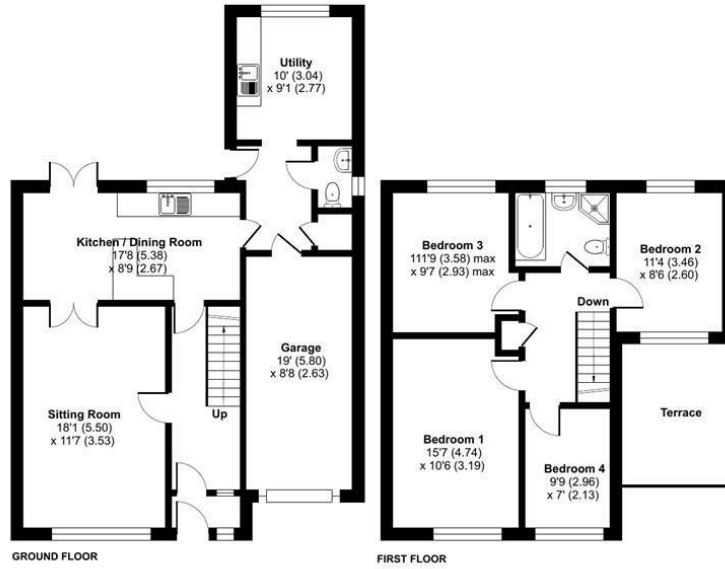
19' x 8'8 (5.79m x 2.64m)

Rear Elevation

Floor Plan

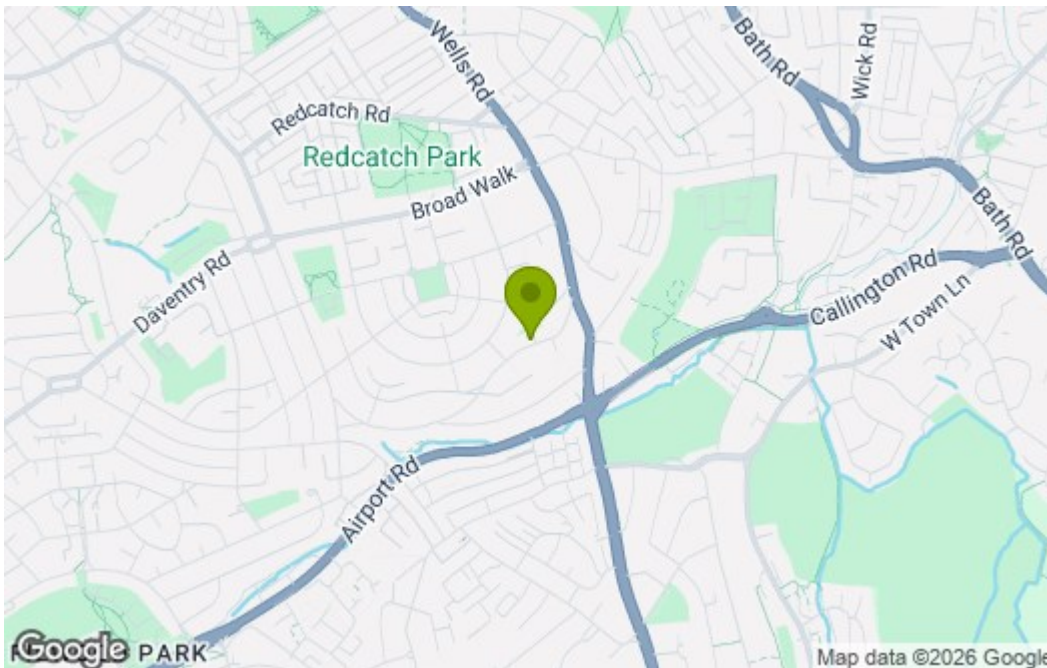
Broadfield Road, Bristol, BS4

Approximate Area = 1244 sq ft / 115.5 sq m
 Garage = 164 sq ft / 15.2 sq m
 Total = 1408 sq ft / 130.7 sq m
 For identification only - Not to scale

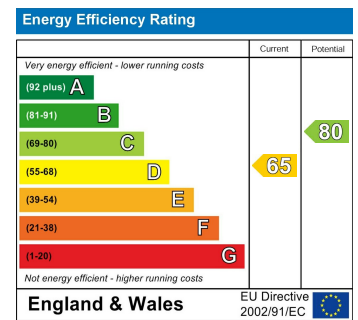


Floor plan produced in accordance with RICS Property Measurement 2nd Edition, incorporating International Property Measurement Standards (IPMS2 Residential). © nrichcom 2026. Produced for Flyp Homes Limited. REF: 1454936

Area Map



Energy Efficiency Graph



These particulars, whilst believed to be accurate are set out as a general outline only for guidance and do not constitute any part of an offer or contract. Intending purchasers should not rely on them as statements of representation of fact, but must satisfy themselves by inspection or otherwise as to their accuracy. No person in this firm's employment has the authority to make or give any representation or warranty in respect of the property.