



3 Manor House Lane, Bristol, BS14 9HQ

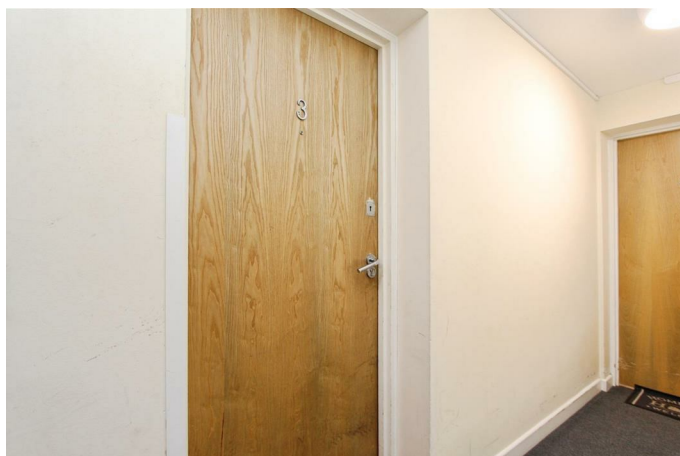
£190,000

For sale: a neutrally decorated two-bedroom flat located in Bristol, offering an appealing opportunity for investors, with a current yield of 6.6%. This ground floor flat features an open-plan kitchen / living and dining space with direct access to communal gardens. Both bedrooms are doubles, and the property includes a modern bathroom. An allocated parking space is provided, along with additional visitor parking within the development.

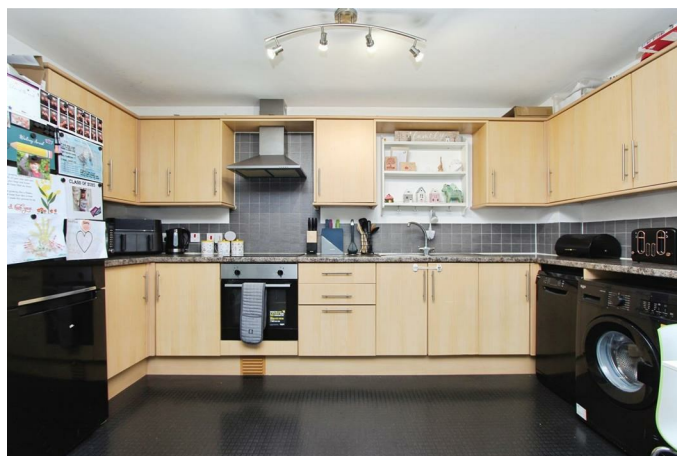
The property holds an EPC rating of B and falls within Council Tax Band B, supporting efficient running costs. The communal gardens offer outdoor space for residents, accessed directly from the open-plan sitting area, enhancing the day-to-day usability of the accommodation.

Situated in the BS14 area of Bristol, the flat benefits from a range of local amenities including supermarkets, convenience stores, and everyday services within a short distance. Hengrove Leisure Park and local green spaces such as Dundry Slopes and local playing fields are accessible by car or bus, offering recreational options.

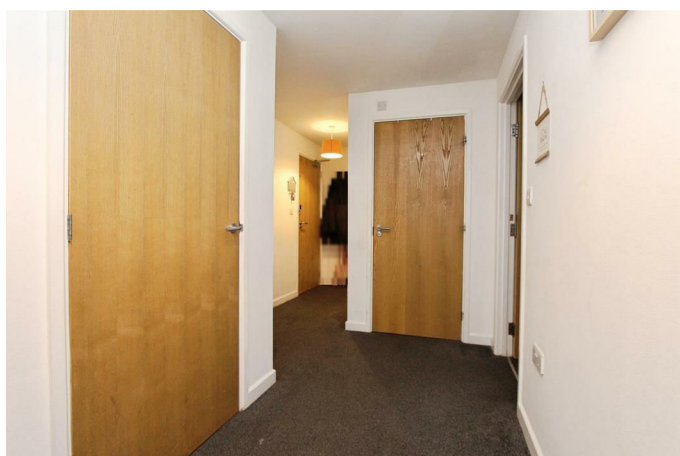
Communal Entrance



Kitchen / Dining Room

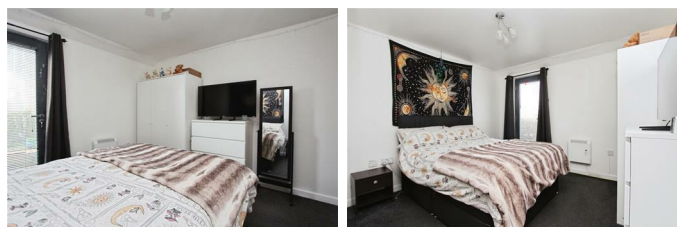


Entrance Hall



Bedroom One

13'10" x 10'10" (4.23 x 3.32)



Bedroom Two

16'0" x 8'0" (4.90 x 2.46)



Open Plan Living

20'11" x 13'10" (6.40 x 4.24)

Living Area



Bathroom

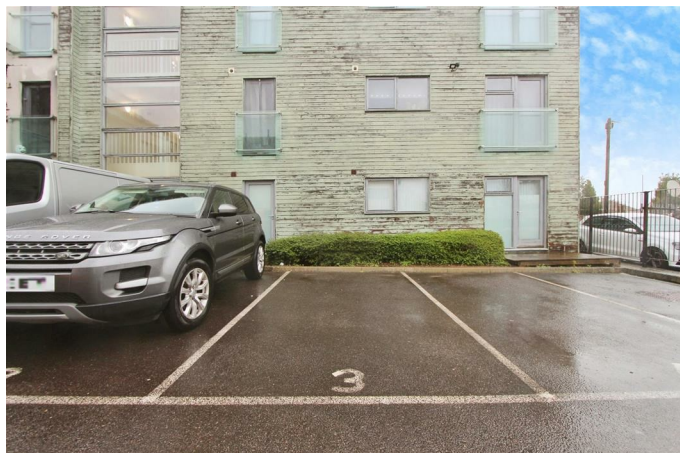
7'10" x 6'7" (2.40 x 2.03)



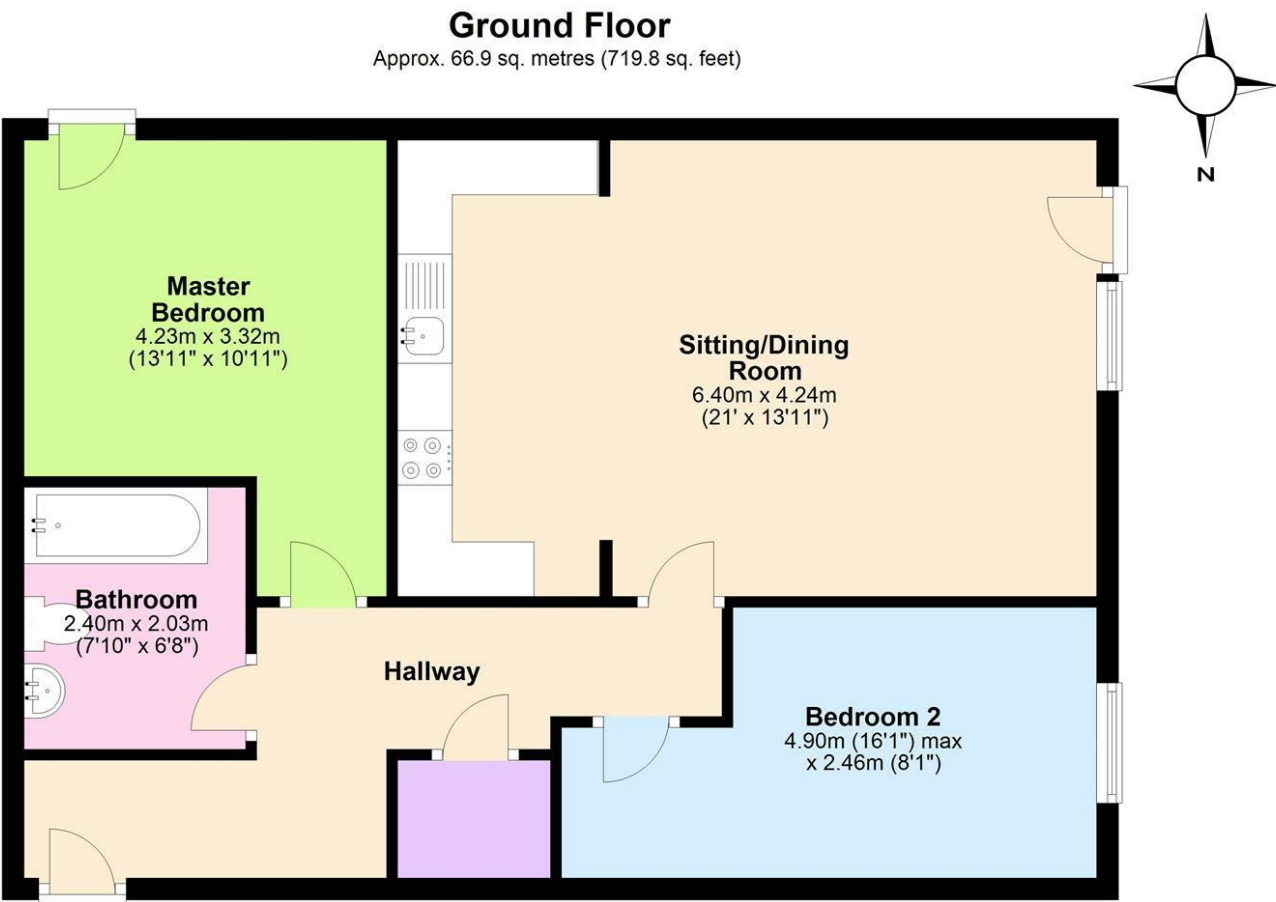
Communal Garden



Parking Space

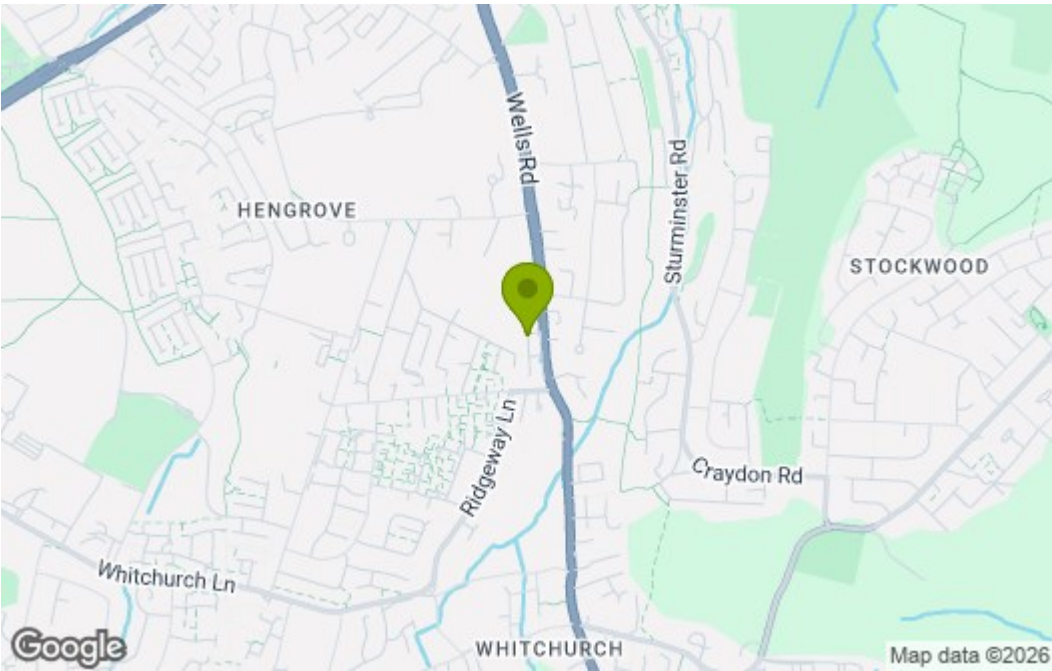


Floor Plan

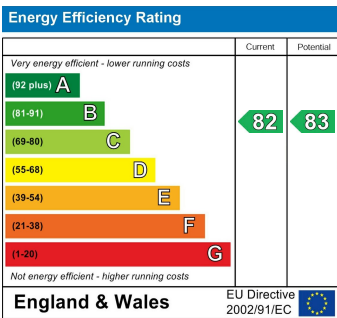


Total area: approx. 66.9 sq. metres (719.8 sq. feet)
3 Manor house, Bristol

Area Map



Energy Efficiency Graph



These particulars, whilst believed to be accurate are set out as a general outline only for guidance and do not constitute any part of an offer or contract. Intending purchasers should not rely on them as statements of representation of fact, but must satisfy themselves by inspection or otherwise as to their accuracy. No person in this firms employment has the authority to make or give any representation or warranty in respect of the property.