



# Bedesdale

Alverstone Road, Queen Bower, PO36 0LB



**£480,000**  
FREEHOLD



Coming to the market for the first time in 50 years, this well presented detached chalet bungalow offering versatile accommodation with three bedrooms, three reception rooms and two bathrooms benefitting from stunning views and a generous garden.

- Characterful detached chalet bungalow
- Three bedrooms and two bathrooms
- Well maintained and arranged
- Driveway and garage parking
- Woodland and countryside walks on the doorstep
- Versatile accommodation throughout
- Potential to put your stamp on
- Large rear garden with outbuildings
- Short drive to local amenities and schools
- Offered for sale chain free

For more information and to arrange a viewing, please contact Susan Payne Property on **01983 566244**.

Preview our newest listings first!  
Search on Facebook for:  
**Susan Payne Property**  
**Home Hunters**

**rightmove**

**Zoopla**

**OnTheMarket.com**

**PrimeLocation**



You can also email us at [sales@susanpayneproperty.co.uk](mailto:sales@susanpayneproperty.co.uk), visit our website at [susanpayneproperty.co.uk](http://susanpayneproperty.co.uk) or visit us at East Quay, Wootton Bridge, Isle of Wight PO33 4LA. You can also follow us on Facebook, Twitter and Instagram.



Offered for sale chain free, this fantastic chalet bungalow is situated within a peaceful, rural location with the benefit of amenities only a short distance away. The property has been in the same ownership for the last 50 years and offers well maintained accommodation throughout whilst giving the new owners an exciting opportunity to put their own stamp on. The accommodation comprises a large entrance hall providing access to the living room, ground floor bedroom, the dining room, a bathroom, and the kitchen which leads to the sunroom. The stairwell from the entrance hall leads to the first floor accommodation which comprises two double bedrooms, one with an en-suite shower room. Boasting stunning and far reaching views from the rear, the property benefits from a large rear garden with plenty of opportunities to landscape to the new owners specifications. A large driveway to the front of the property offers parking for multiple vehicles, plus there is a garage.

Nestled amongst idyllic rural landscapes, the hamlet of Queen Bower enjoys a perfect balance of a peaceful environment and conveniences of the Island's principal towns of Newport and Sandown which are only a short drive away. Sandown and Newport provide extensive amenities with a wide range of shops and supermarkets, pubs and restaurants and cultural activities. Queen Bower is also positioned on the fringes of the quaint village of Newchurch which boasts one of the most highly regarded pubs on the Island, The Pointer Inn, which is known for its mouth-watering locally sourced food and a fantastic beer garden offering beautiful views of the surrounding countryside. Bedesdale enjoys plenty of rural walks and cycling routes nearby including the scenic Red Squirrel cycle path linking to Sandown and Newport, taking you through red squirrel inhabited woodland, farmland, estuaries and a stretch of the Island's magnificent coastline. The Southern Vectis bus route 8 connects Winford with the towns of Newport, Sandown, Shanklin and Ryde, including intermediate villages, and is only a few minutes walk from the property.

### **Welcome to Bedesdale**

The attractive, characterful chalet bungalow benefits from a set back position from the road with a delightful front garden made up of shrubs, a cordyline palm tree, plus the driveway can be found to one side. A charming open porch leads to the front door.

### **Entrance Hall**

Filled with natural light, this entrance hall provides access through the ground floor and is neutrally decorated like most of the property. The stairwell to the first-floor landing can be found here.

### **Living Room**

Benefitting from dual aspect windows to the front and side, this naturally light room is neutrally decorated and benefits from a lovely gas feature fire.

### **Ground Floor Bedroom**

Occupying a ground floor position with a large window to the front aspect, this versatile room has potential to be used in a number of ways including a snug, an office, or a play room. A handy built in cupboard on one side of the chimney offers storage.

### **Dining Room**

Offering a large sliding door with wonderful views over the rear garden, this space is currently utilised as a dining room but has potential to be an additional bedroom, snug, or office, if required.

### **Ground Floor Bathroom**

Comprising a bath with an electric shower over, a w.c, and a hand basin, this handy bathroom features two obscure glazed windows to the rear aspect.





### **Kitchen**

Fitted with a range of base and wall cabinets, this kitchen space features a large window to the rear aspect with views over the garden and beyond, and a small square window, also to the rear aspect. One side of the chimney breast is fitted with a range of cabinets and also houses the immersion tank and airing cupboard. There is space for two appliances including plumbing for a washing machine.

### **Sunroom**

Enjoying dual aspect windows to the front and rear, this fantastic addition to the property offers a door to the rear garden as well as the gas boiler. This space could be transformed into a utility room or office, if desired.

### **First Floor Landing**

The carpeted stairwell from the entrance hall leads up to a small landing space which provides access to two double bedrooms.

### **Bedroom One**

Generously proportioned, this double bedroom benefits from a dormer window with a window seat to make the most of the wonderful, far reaching countryside views. Facing west, the window seat also offers the best seat in the house to enjoy sunsets all year round. This double bedroom benefits from an en-suite shower room.

### **En-Suite**

Offering plenty of space for a shower and separate bath, if desired, this lovely ensuite features a window to the side aspect and comprises a pedestal hand basin, a w.c, and a shower.

### **Bedroom Two**

Continuing the neutral décor, this double bedroom features a built-in cupboard and wonderful views to the side aspect, through the large window.

### **Garden**

Presenting an exciting opportunity to create your own garden oasis, this beautiful garden is mostly laid to lawn and features a variety of paved seating areas and a pond. The garden also offers a stone built shed which comprises a w.c and an additional shed which is ideal for storage. The hedge lined boundaries encourage plenty of wild birds and animals, plus at the bottom of the garden is a large oak tree which provides some shade from the hot summer sun. Several external water taps can be found around the garden making it easy to water plants or gain access to a water point, plus the east to west facing garden makes the perfect spot for growing your own veggies, if desired.

### **Parking and Garage**

A large gravel driveway to the front of the property provides parking for several vehicles as well as offering a single garage with an up and over garage door. There is potential to expand the driveway, if required.

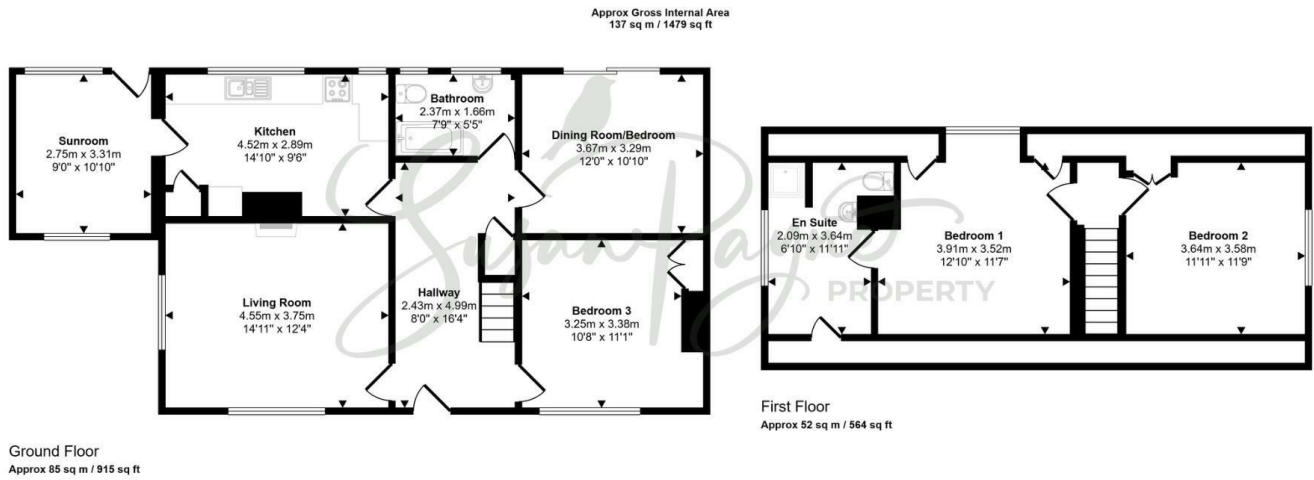
Bedesdale presents a fantastic opportunity to acquire a detached chalet bungalow with an exciting opportunity to make your own. A viewing is highly recommended by the sole agent, Susan Payne Property.

### **Additional Details**

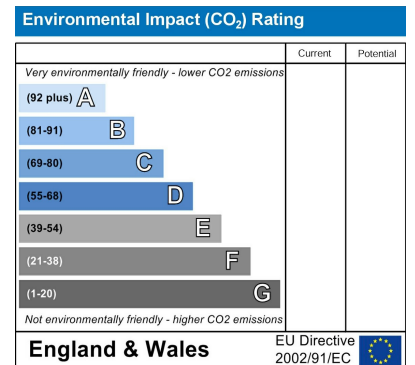
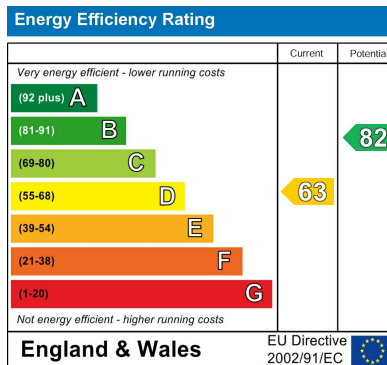
Tenure: TBC

Council Tax Band: E (approx. £2,916.05 pa – Isle of Wight Council 2025/2026)

Services: Mains water, electricity, gas, and drainage



This floorplan is only for illustrative purposes and is not to scale. Measurements of rooms, doors, windows, and any items are approximate and no responsibility is taken for any error, omission or mis-statement. Icons of items such as bathroom suites are representations only and may not look like the real items. Made with Made Snappy 360.



#### Agent Notes:

The information provided about this property does not constitute or form part of an offer or contract, nor may it be regarded as representations. All interested parties must verify accuracy and your solicitor must verify tenure/lease information, fixtures and fittings and, where the property has been extended/converted, planning/building regulation consents.

All dimensions are approximate and quoted for guidance only and their accuracy cannot be confirmed. Reference to appliances and/or services does not imply that they are necessarily in working order or fit for the purpose. Susan Payne Property Ltd. Company no.10753879.