



T₂m

Flat 1, 47 Croham Road

£1,695 PCM

Ground floor split level two double bedroom luxury apartment situated 0.4 miles from South Croydon mainline station, available to move in to straight away.

As you walk through the front door of this property you enter into the hallway. From the hallway you will find an open plan kitchen/living/ dining room with carpet in the living room and tiles in the kitchen area; the modern fitted kitchen hosts a fridge freezer, electric oven, four ring gas hob, washer dryer and dishwasher. You will also find a WC on the ground floor. Off the hallway there are stairs leading down to the two double bedrooms with carpet and built in wardrobe and modern bathroom with shower over the bath, vanity unit under the sink and WC.

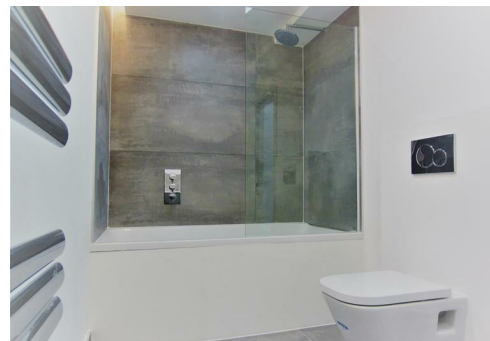
The property benefits from have been newly developed completed in August 2018, new carpet throughout, gas heating and double glazing.

South Croydon is a popular location and has several food outlets, bars and local supermarkets. It also has the advantage of having Lloyd Park that offers the opportunity for jogging, football, a stroll or a picnic with your friends/family. You will also find South Croydon Station which has links to London Bridge, London Blackfriars and London Victoria.

Local Authority
Croydon London Borough Council

Council Tax Band C

EPC Rating C



Contact

02086400146

admin@time2move.com

www.time2move.com