

George Adams

ESTATE AGENTS



19 Palatine Road, Manchester, M20 3LH

£1,000 PCM



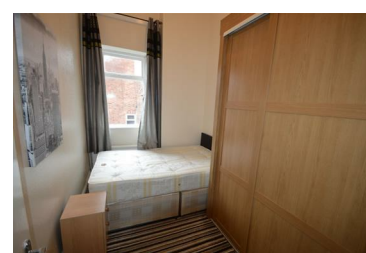
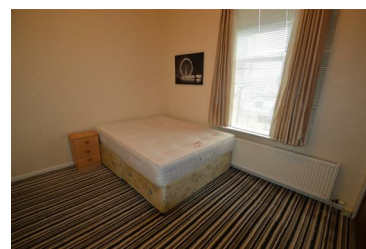
Available 5th January 2026

Fantastic two bedroom apartment in the heart of Withington Village. The property consists of lounge with dining area, separate kitchen, two double bedrooms, and bathroom. This apartment is ideally located with local amenities near by and excellent transport links to the Universities and City Centre.

£60 monthly charge added to rent for gas central heating & hot water.

The heating at this property is on a timed morning & evening schedule and is not on throughout the day. Please ask agent for further details.

- FITTED KITCH
- BATH WITH SHOW
- DOUBLE GLAZING
- ENTRYPHONE
- WASHING MACHINE



Unit 1 Bishops Corner, 321 Stretford Road, Hulme, Manchester, M15 4UW

Tel: 01612262288 Email: enquiries@georgeadamsestateagents.co.uk www.altosoftware.co.uk