

George Adams

ESTATE AGENTS



112 Rolls Crescent, Manchester, M15 5FP

£1,350



Available Now

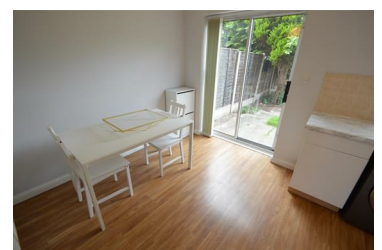
Now available this 3 bedroom house situated in the popular area of Hulme. The house is across the road from the Birley Campus of MMU and just a 15 - 20 minute walk to Oxford Road and the Universities.

The property comprises of a fully fitted kitchen with dining area, lounge with patio doors leading to private decked rear garden, 3 bedrooms (two double and one single), main bathroom, and downstairs WC.

The property also benefits from gas central heating, secure parking.

The property is provided fully furnished.

Perfect student let.



Unit 1 Bishops Corner, 321 Stretford Road, Hulme, Manchester, M15 4UW
Tel: 01612262288 Email: enquiries@georgeadamsestateagents.co.uk www.altosoftware.co.uk