



3 Jubilee Cottages La Route de L'Etacq

St Ouen, Jersey, JE3 2FD

Asking price £645,000



We are delighted to present 3 Jubilee Villas, a recently renovated and characterful two bedroom granite cottage ideally positioned at L'Etacq in the highly sought after parish of St Ouen.

Bright and filled with natural light, the cottage offers well balanced accommodation with a kitchen and dining space, a comfortable lounge and a house shower room on the ground floor. Upstairs, there are two generous double bedrooms along with a separate WC.

A particularly attractive feature is the additional two storey bake house, complete with an original granite fireplace. This provides excellent versatility and is ideal for those seeking extra space, whether for conversion into further accommodation, a home office, hobby space or simply valuable storage, subject to any necessary consents.

Externally, the property benefits from its own south west facing garden, enjoying a superb outlook with views stretching from Corbière Lighthouse to L'Etacq. There are also two designated parking spaces, adding further convenience in this popular location.

If you are looking for a newly renovated home that is ready to move straight into, 3 Jubilee Villas is well worth viewing.



Ground Floor

Kitchen / Diner 14'9" x 9'2" (4.5 x 2.8)

Range of high and low wooden kitchen units with wooden worktops, ceramic 1.5 bowl sink and drainer, integrated Bosch oven with hobs and extractor over and under counter lighting. There's a window letting in plenty of light and doors leading to entrance garden & private south / west facing garden to the rear of the property.

Lounge 14'9" x 12'11" (4.5 x 3.95)

Great sized lounge laid to carpet with two windows letting in plenty of natural light. Carpeted stairs to first floor.

House Shower Room 10'2" x 4'9" (3.1 x 1.47)

Shower room with insulated wood effect flooring & part tiled walls, walk-in shower and enclosure, WC, heated towel rail and sink with cupboards below and lit mirror above. Recessed lighting.

First Floor

Landing

Carpeted landing with low level window & doors to Bedrooms 1 & 2 plus upstairs WC

Bedroom 1 14'4" x 7'8" + 8'2" x 7'6" (4.385 x 2.34 + 2.511 x 2.3)

Spacious double bedroom laid to carpet with window letting in plenty of light.

WC 5'8" x 3'3" (1.75 x 1.0)

Handy upstairs WC with wood effect flooring, WC, wash hand basin with cupboard below and mirror above.

Bedroom 2 13'5" x 11'4" + 4'0" x 3'4" (4.1 x 3.47 + 1.243 x 1.04)

Spacious double bedroom laid to carpet with window letting in plenty of light.

Bake House

Attached unconverted 2 storey bake house with original granite fireplace. Ideal for storage or converting into further accommodation, home office, etc., etc (subject to necessary permissions)

Garden

Terraced south / west facing garden partly planted with fruit trees, the remainder laid to grass. Enjoy alfresco living and entertaining whilst taking in the sea views from Corbiere Lighthouse to L'Etacq.

Parking

Designated parking for 2 cars

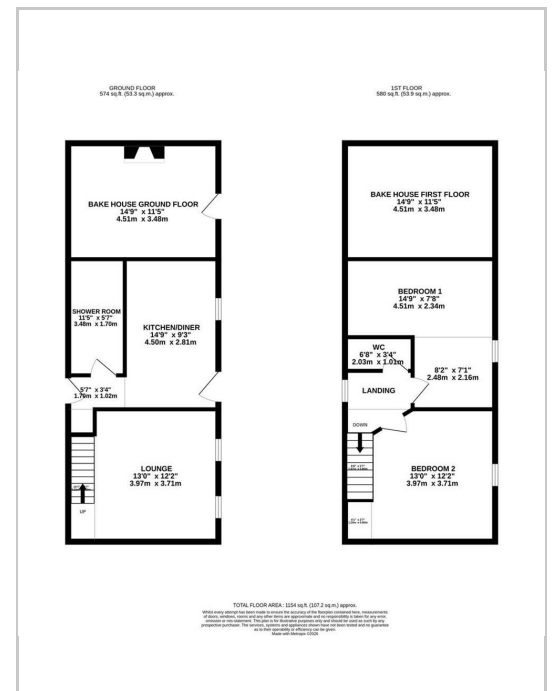
Services

Mains drains, mains water & electric heating.

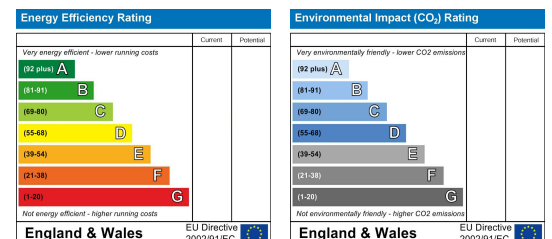
Area Map



Floor Plan



Energy Efficiency Graph



These particulars, whilst believed to be accurate are set out as a general outline only for guidance and do not constitute any part of an offer or contract. Intending purchasers should not rely on them as statements of representation of fact, but must satisfy themselves by inspection or otherwise as to their accuracy. No person in this firm's employment has the authority to make or give any representation or warranty in respect of the property.

LE HOUGILLON, LA RUE DE LA PIECE MAUGER, TRINITY, JE3 5HW

TEL: 840818 · WWW.ESTATES.JE · INFO@ESTATES.JE

OUR HERITAGE, YOUR HOME