



120 Castlemeads Court, Westgate Street

, Gloucester, GL1 2PB

£850

One bedroom retirement flat. This great apartment is located on the fourth floor of the development.

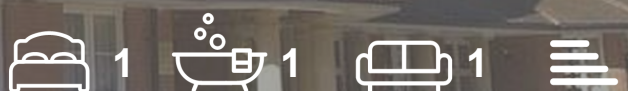
Castlemeads Court is located within walking distance of many shops and cafes. It offers secure gated parking for residents and visitors, a spacious communal lounge with regular events and activities, library room with board games and puzzles, laundry facilities, guest accommodation, a lift and a sunny courtyard garden.

New residents accepted from 55 years of age.

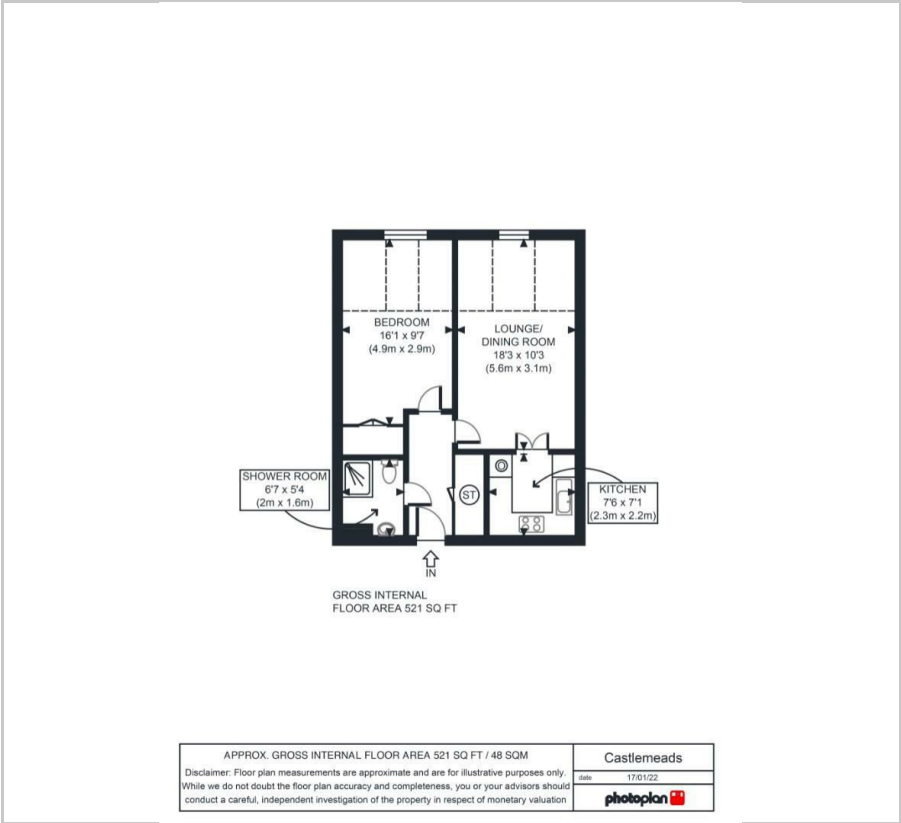
- One Bedroom Retirement Flat
- Resident Manager
- Emergency Alarm System
- Video Door Entry System Linked to TV
- Residents' Lounge & Communal Garden
- Communal Laundry & Guest Facilities
- Lift to all Floors
- Shared Secure Parking

Viewing

Please contact our UK Retirement Rentals Office on 0203 967 7960 if you wish to arrange a viewing appointment for this property or require further information.



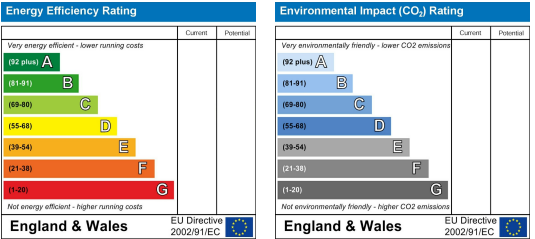
Floor Plan



Area Map



Energy Efficiency Graph



These particulars, whilst believed to be accurate are set out as a general outline only for guidance and do not constitute any part of an offer or contract. Intending purchasers should not rely on them as statements of representation of fact, but must satisfy themselves by inspection or otherwise as to their accuracy. No person in this firms employment has the authority to make or give any representation or warranty in respect of the property.