



## 45 Homewillow Close

, London, N21 2HJ

**£1,500 Per month**

Recently renovated one bedroom top floor retirement flat in this popular Development in Homewillow Close which is in the heart of Grange Park. The property is situated within walking distance of local shops, restaurants, buses, and railway station.

The development has stunning communal gardens wrapping around the whole development. The accommodation comprises of lounge, kitchen, bathroom, bedroom, and storage cupboard. There is also a communal lounge, kitchen, laundry room and guest suite that can be hired for guests.

Residents must be over 60 years of age.

- Extensive Communal Gardens
- Resident Management Staff & Care Alarm Service
- Restricted Age - 55/60 Years
- Communal Facilities including Guest Room
- Lift & Stair Access to Top Floor Flat
- Great Location & Good Transport Links

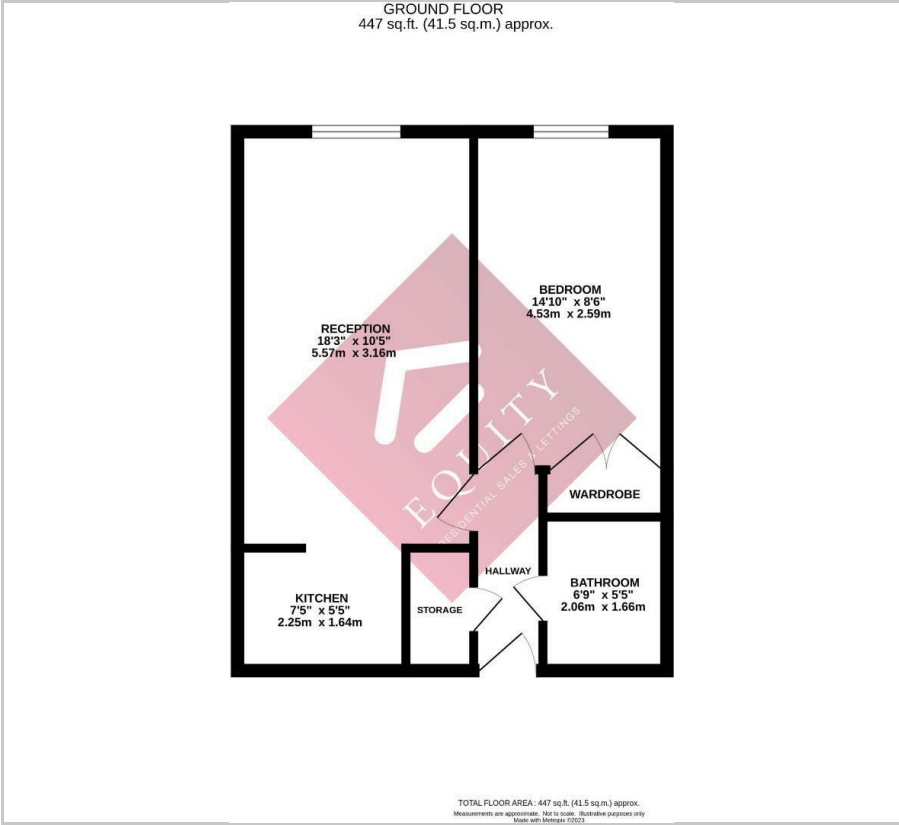
### Viewing

Please contact our UK Retirement Rentals Office on 0203 967 7960 if you wish to arrange a viewing appointment for this property or require further information.





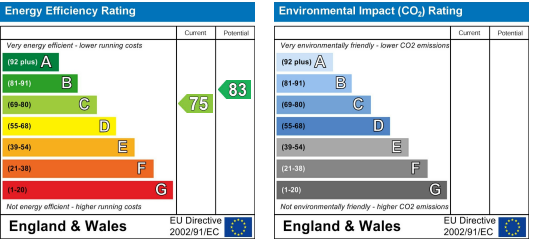
Floor Plan



Area Map



Energy Efficiency Graph



These particulars, whilst believed to be accurate are set out as a general outline only for guidance and do not constitute any part of an offer or contract. Intending purchasers should not rely on them as statements of representation of fact, but must satisfy themselves by inspection or otherwise as to their accuracy. No person in this firms employment has the authority to make or give any representation or warranty in respect of the property.