



22 Bluebell Gardens, Wells-Next-the-Sea
Guide Price £450,000

BELTON DUFFEY

22 BLUEBELL GARDENS, WELLS-NEXT-THE-SEA, NORFOLK, NR23 1JJ

A spacious and well appointed 3 bedroom semi-detached house with conservatory extension, garage and south facing landscaped garden close to all amenities.

DESCRIPTION

22 Bluebell Gardens is an exciting opportunity to purchase this modern semi-detached house situated on a cul-de-sac within walking distance of the Quay, the town, and all its amenities. The accommodation has been much improved by the current owners with the ground floor comprising an entrance hall, cloakroom, sitting room and an open plan kitchen/dining room leading into a conservatory. Upstairs, a galleried landing leads to 3 bedrooms and a shower room.

Outside, there is driveway parking, an attached garage and a delightful south facing landscaped garden to the rear.

The property, benefiting from gas-fired central heating and UVPC doors and windows throughout, will appeal to owner occupiers, those seeking a private holiday home or equally as a vacation lettings investment being low maintenance and well located in this popular coastal town.



SITUATION

Wells-next-the-Sea has been a commercial and fishing port for nearly 600 years and still supports a thriving fishing fleet bringing in a catch of, predominantly, shellfish sold locally on the quayside and in nearby restaurants. With a growing number of leisure craft moorings, a lively, sociable sailing club, harbour and sea fishing trips, the town caters for every type of water activity including "gillying" - crabbing on the quayside. Situated a mile from the Quay, the extensive sandy beach is often ranked as one of the top 10 in the country by travel journals. Set against a backdrop of Corsican pinewoods, the stunning beach is home to the much publicised, iconic colourful beach huts, which are available to buy or can be rented daily.

From the top of town down to the Quay, Staithe Street provides visitors and locals with a wide variety of shops, cafes, galleries and speciality food stores. For entertainment, the recently opened Wells Maltings offers live entertainment and exhibitions, whilst alongside the Quay, are all the usual popular traditional seaside attractions. Alongside coastal scenery, wildlife and water sports, the town has a primary and secondary school – both rated Good by Ofsted - as well as a library, doctor's surgery and cottage hospital providing a range of accessible and integrated health and well-being services.

ENTRANCE HALL

A UPVC door leads from the front of the property into the entrance hall with a window to the side, radiator , laminate style flooring.

CLOAKROOM

Window to front, WC, vanity unit with inset wash basin and ornate tiled splashback, radiator, laminate style flooring.

SITTING ROOM

4.86m x 4.52m (15' 11" x 14' 10") at widest points. A bright and spacious room with window to front, feature fireplace with contemporary flame effect fire and marble hearth, radiator, staircase to first floor with storage cupboard under.

KITCHEN DINING ROOM

4.83m x 2.93m (15' 10" x 9' 7") A spacious family open plan kitchen/dining room comprising;

KITCHEN AREA

Range of oak effect base and wall units with laminate worktops incorporating a white ceramic one and a half bowl sink unit with a mixer tap and filtered water tap, tiled splashbacks. Integrated oven and gas hob with a stainless steel extractor hood over, spaces and plumbing for a washing machine and fridge freezer, fitted automatic dishwasher, cupboard housing the Worcester gas-fired boiler. Understairs pantry cupboard, partly glazed UPVC stable door to the side and a window overlooking the rear garden. Open plan to:

DINING AREA

Room for a dining table and chairs, radiator and UPVC French doors leading into:



CONSERVATORY

2.75m x 2.30m (9' x 7' 7") UPVC double glazed construction on brick plinth with a glass roof, power points and UPVC French doors leading out to the rear patio.

FIRST FLOOR LANDING

Galleried first floor landing with a shelved airing cupboard housing the hot water cylinder, window to the side and doors to the 3 bedrooms and bathroom.

BEDROOM 1

3.88m x 2.60m (12' 9" x 8' 6") Radiator and a window to the front.

BEDROOM 2

3.38m x 2.52m (11' 1 x 8' 3) Radiator and a window overlooking the rear garden.

BEDROOM 3

2.36m x 2.17m (7' 9 x 7' 1) Radiator and a window to the front.

SHOWER ROOM

2.23m x 1.84m (7' 4 x 6') Window to rear (obsured glass), suite comprising shower cubicle with a chrome power shower, pedestal wash basin and WC, full height tiling, Illuminated mirror, laminate style flooring, radiator, extractor fan, ceiling mounted spotlights.

GARAGE

An attached garage with up and over door, pitched roof with eaves storage, power and light connected, personal door to rear patio and garden. External EV charger.

OUTSIDE

22 Bluebell Gardens is set back from the road featuring a deep slate frontage with space for planters, etc, and a concrete driveway to the side providing parking and leading to the attached garage.

The delightful south backing garden has been beautifully landscaped with low maintenance in mind with generous flagstone patio and steps up to a tiered ornamental gravel garden with inset plants and shrubs and a small paved and gravel terrace on the top tier. The garden is fully enclosed with high fence panelling to the east and west and high conifer hedging to the rear boundary. Gated access to pedestrian side alley.

DIRECTIONS

From Belton Duffey's Wells-next-the-Sea office, turn left and proceed up to the top of Staithe Street turning left, passing the Post Office. At the T-junction, turn right, proceeding along Polka Road and, after about 400 yards, turn left into Bluebell Gardens. Number 22 can be found on the right-hand side, approximately two thirds of the way down.

OTHER INFORMATION

Mains water, mains drainage and mains electricity. Gas-fired central heating to radiators. EPC Rating Band C.

North Norfolk District Council, Holt Road, Cromer, Norfolk, NR27 9EN. Council Tax Band C.

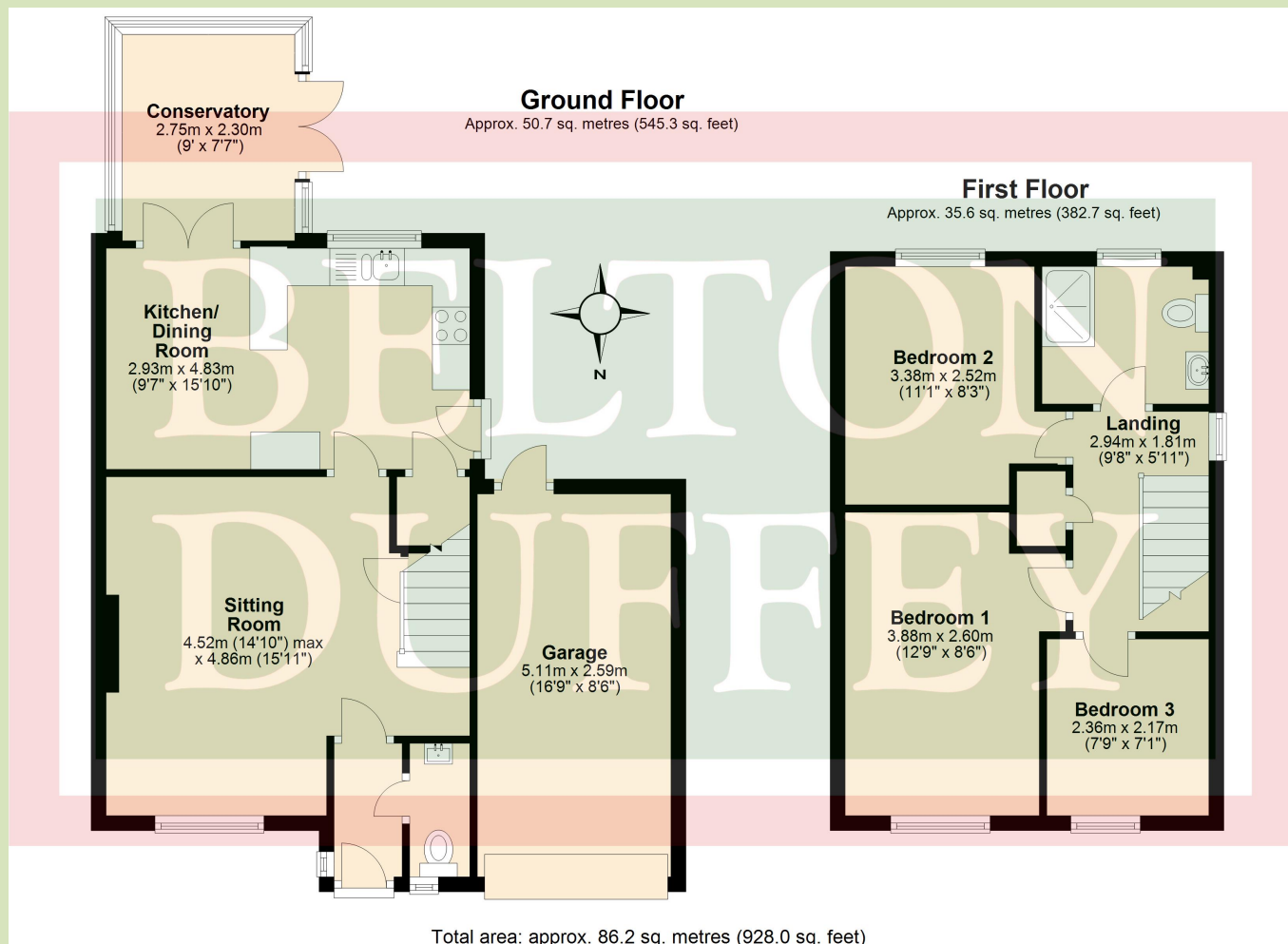
TENURE

This property is for sale Freehold.

VIEWING

Strictly by appointment with the agent.







BELTON DUFFEY

12-16 Blackfriars Street,
King's Lynn,
Norfolk, PE30 1NN.
T: 01553 770055
E: info@beltonduffey.com

3 Market Place,
Fakenham,
Norfolk, NR21 9AS.
T: 01328 855899
E: fakenham@beltonduffey.com

26 Staithe Street,
Wells-next-the-Sea,
Norfolk, NR23 1AF.
T: 01328 710666
E: wells@beltonduffey.com

www.beltonduffey.com

IMPORTANT NOTICES: 1. Whilst these particulars have been prepared in good faith to give a fair description of the property, these do not form any part of any offer or contract nor may they be regarded as statements of representation of fact. 2. Belton Duffey have not carried out a detailed survey, nor tested the services, appliances and specific fittings. All measurements or distances given are approximate only. 3. No person in the employment of Belton Duffey has the authority to make or give representation or warranty in respect of this property. Any interested parties must satisfy themselves by inspection or otherwise as to the correctness of any information given.

