



Cauldwell

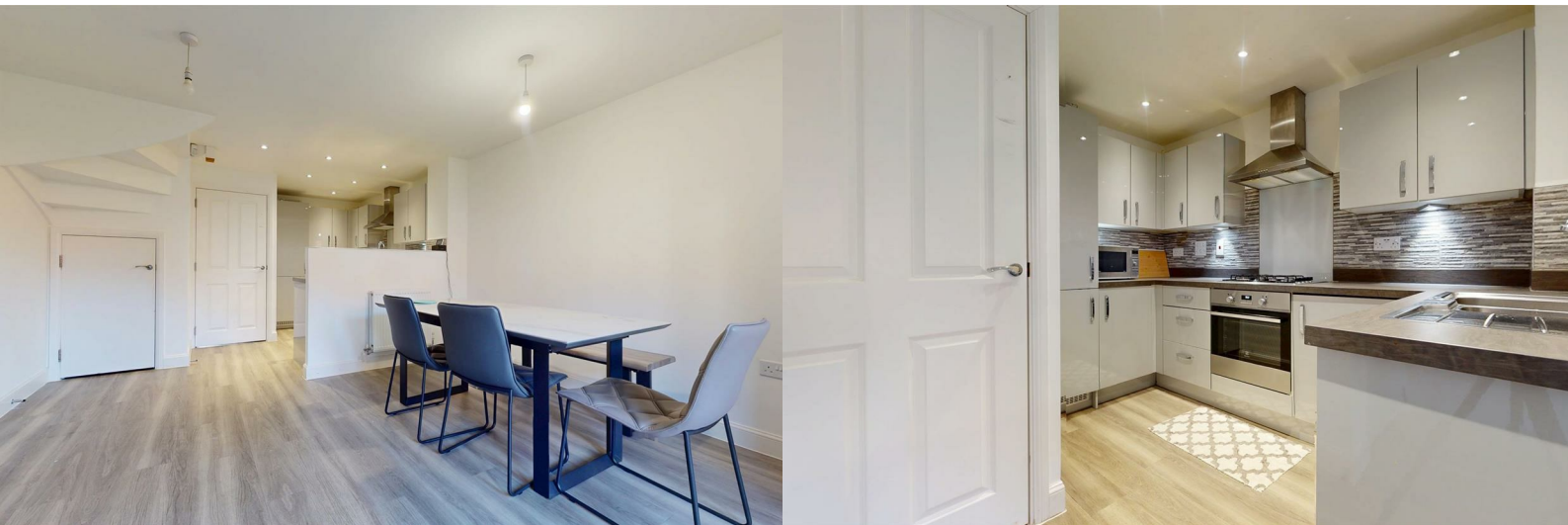
PROPERTY SERVICES



53 Cranmore Circle

Broughton, Milton Keynes, MK10 7DD

£525,000



53 Cranmore Circle

Broughton, Milton Keynes, MK10 7DD

£525,000



ENTRANCE HALL

Composite double glazed door to front. Utilities cupboard housing combination boiler. Internet point. Radiator. Stairs to first floor landing. Amtico flooring.

CLOAKROOM

Two piece suite comprising close coupled wc and wash hand basin. Radiator. Extractor fan. Amtico flooring.

STUDY

9'2" x 6'0" (2.80 x 1.85)

Double glazed window to front. Radiator. Amtico flooring.

OPEN PLAN LIVING/DINING/KITCHEN

23'5" x 12'11" into bay (7.15 x 3.94 into bay)

Double glazed French doors and windows to rear. Two radiators. Understairs storage cupboard. Television point. Amtico flooring.

KITCHEN AREA

Fitted wall and base units with worksurfaces incorporating one and half bowl sink drainer and mixer tap with water purifier and drinking water tap. Electric oven, four ring hob and extractor hood over. Integral fridge freezer, washing machine and dishwasher. Under cupboard lighting. Amtico flooring.

FIRST FLOOR LANDING

Stairs from entrance hall. Radiator. Stairs to second floor landing.

LIVING ROOM

16'2" x 15'8" (4.95 x 4.79)

Double glazed bi fold doors to front with Juliette balcony. Three double glazed windows to rear. Two radiators. Television point.

BEDROOM ONE

12'9" x 9'10" (3.90 x 3.01)

Two double glazed windows to rear. Radiator. Built in wardrobe with sliding doors. Bedroom furniture. Door to ensuite.

ENSUITE

Three piece suite comprising double shower cubicle with shower over, wash hand basin and close coupled wc. Shaver point. Extractor fan. Radiator. Amtico flooring Wall mounted cabinet.

BEDROOM TWO

12'10" x 10'2" (3.93 x 3.12)

Double glazed bi folding doors to front. Double glazed window to front. Radiator.

SECOND FLOOR LANDING

Stairs from first floor. Radiator.

BEDROOM THREE

12'11" x 13'0" (3.94 x 3.98)

Double glazed windows to front. Radiator. Storage cupboard. Access to loft space.

BEDROOM FOUR

12'10" x 11'5" (3.93 x 3.50)

Two double glazed windows to rear. Radiator. Amtico flooring. Storage cupboard. Amtico flooring.

BATHROOM

Double glazed obscure window to side. Three piece suite comprising bath with mains shower and screen, wash hand basin and close coupled wc. Wall mounted cabinet. Extractor fan. Radiator. Amtico flooring.

FRONT GARDEN

Ornamental shingle stone garden with raised flower beds, plants and flowers.

REAR GARDEN

Laid to lawn with rear width patio area. Timber storage shed. Flower beds and borders. Outside tap and power. Gated access to driveway.

CAR PORT AND DRIVEWAY

3 vehicles off road with additional bedding area and parking

Tel: 01908 304480

GARAGE

20'3" x 10'5" (6.19 x 3.19)

Up and over door to front. Power and light. Eaves storage.

SECURITY SYSTEM

Security alarm fitted with 2xshock sensors to entry doors front and rear, 4xmotion detection sensors (including inside garage).

All measurements are approximate.

The area measurements are taken from the government EPC register.

The mention of appliances and/or services within these sales particulars does not imply that they are in full efficient working order. Please note that any services, heating systems or appliances have not been tested and no warranty can be given or implied as to their working order. **MORTGAGE & FINANCIAL** - The Mortgage Store can provide you with up to the minute information on all available rates. To arrange an appointment, telephone this office **YOUR HOME IS AT RISK IF YOU DO NOT KEEP UP REPAYMENTS ON A MORTGAGE OR OTHER LOANS SECURED ON IT.** Full quotation available on request. A suitable life policy may be required. Loans subject to status. Minimum age 18.

The above details have been submitted to our clients but at the moment have not been approved by them and we

therefore cannot guarantee their accuracy and they are distributed on this basis. Please ensure that you have a copy of our approved details before committing yourself to any expense.

We routinely refer customers to Franklins solicitors, Gough Thorne and The Mortgage Store. It is your decision whether you choose to deal with them, in making that decision, you should know that we receive a referral fee in the region of £80 to £250 for recommending you to them

All clients are subject to identity and source of funds checks. We use a third party company to complete these for us. The charge is £60 inc vat per transaction which requires to be paid at your earliest convenience once your offer has been accepted, this enables us to conduct the verification checks we are obliged to do as per HMRC Anti Money Laundering guidelines.



Road Map



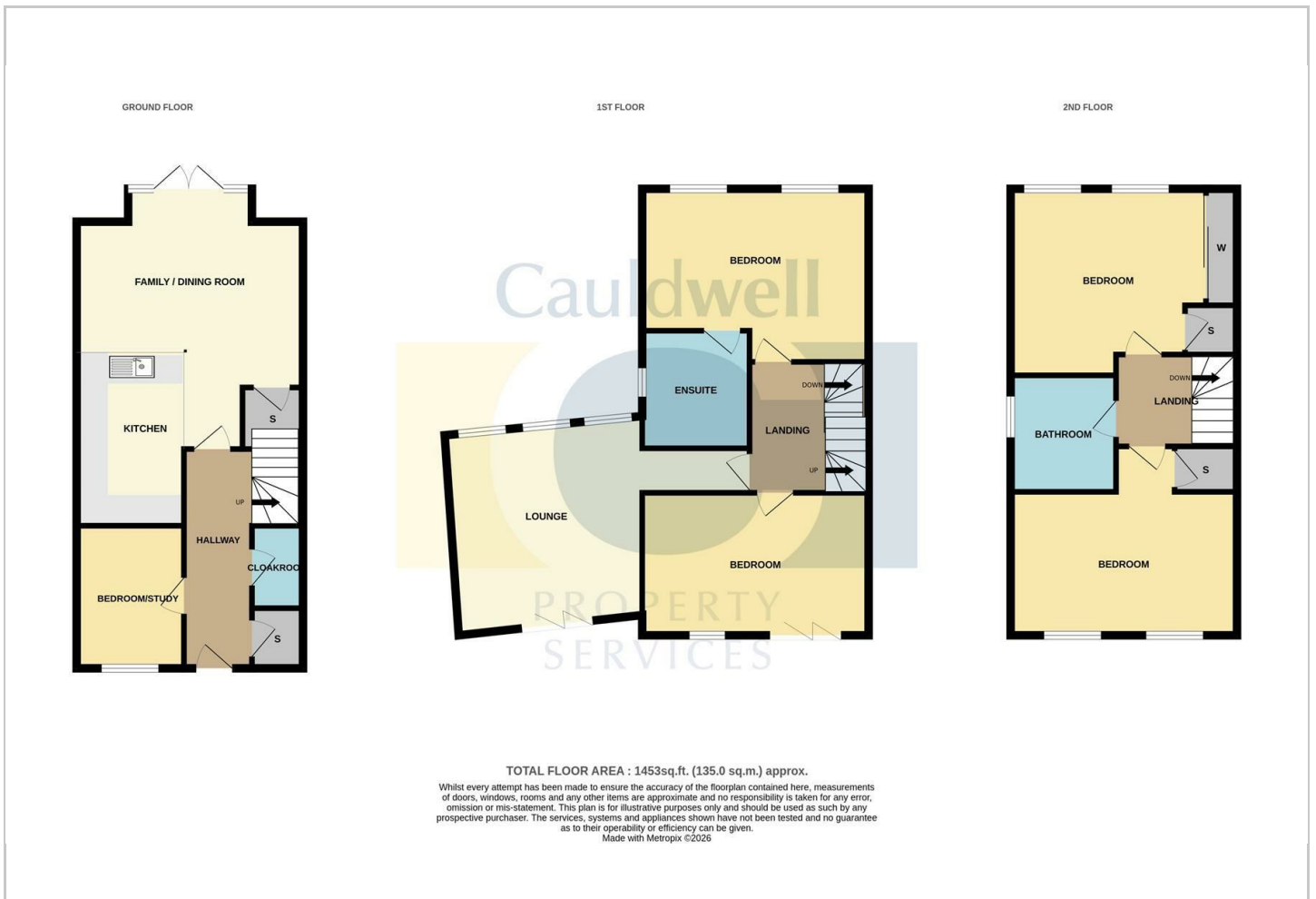
Hybrid Map



Terrain Map



Floor Plan



Viewing

Please contact our Cauldwell Property Sales Office on 01908 304480 if you wish to arrange a viewing appointment for this property or require further information.

Energy Efficiency Graph

Energy Efficiency Rating		Current	Potential
Very energy efficient - lower running costs			
(92 plus) A			
(81-91) B			
(69-80) C			
(55-68) D			
(39-54) E			
(21-38) F			
(1-20) G			
Not energy efficient - higher running costs			
England & Wales		EU Directive 2002/91/EC	

These particulars, whilst believed to be accurate are set out as a general outline only for guidance and do not constitute any part of an offer or contract. Intending purchasers should not rely on them as statements of representation of fact, but must satisfy themselves by inspection or otherwise as to their accuracy. No person in this firm's employment has the authority to make or give any representation or warranty in respect of the property.