



Cauldwell

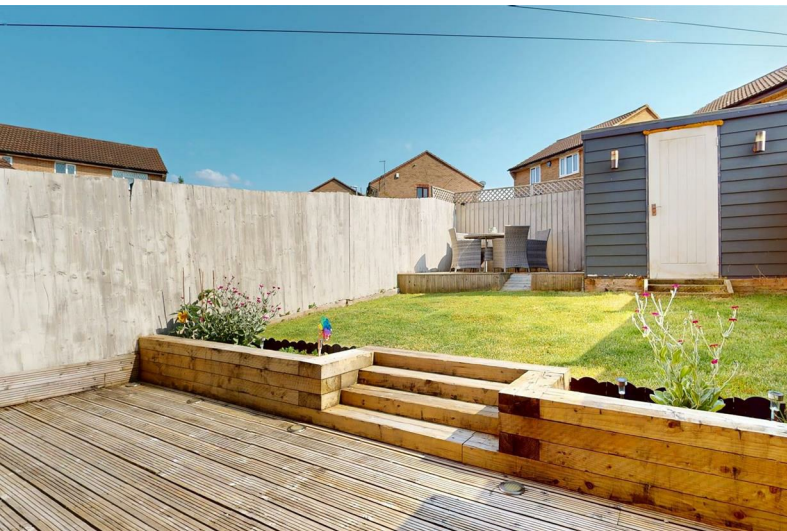
PROPERTY SERVICES



7 Gisburn Close

Heelands, Milton Keynes, MK13 7QQ

£269,000



7 Gisburn Close

Heelands, Milton Keynes, MK13 7QQ

£269,000



ENTRANCE HALL

Double glazed UPVC door to side and double glazed window to front. Shoe storage cupboard. Door to living room.

LIVING ROOM

13'9" x 11'8" (4.20 x 3.56)

Double glazed window to front. Stairs to first floor landing. Radiator. Television point. Fibre optic internet point. Arch to kitchen/diner.

KITCHEN/DINER

16'0" x 8'11" (4.9 x 2.73)

Double glazed window and door to rear. Fitted with a modern range of wall and base units with worksurfaces and one and half bowl sink drainer and mixer tap. Electric oven and induction hob with extractor over. Space for fridge freezer. Plumbing for washing machine. Wall mounted combination boiler. Radiator.

FIRST FLOOR LANDING

Stairs from living room. Airing cupboard. Access to part boarded loft space.

BEDROOM ONE

13'10" x 8'6" (4.22 x 2.60)

Two double glazed windows to front. Radiator. Overstairs recess with shelving and fitted rail.

BEDROOM TWO

9'3" x 7'3" (2.82 x 2.23)

Double glazed window to rear. Radiator. Overstairs recess with fitted shelving.

BATHROOM

Double glazed obscure window to rear. Three piece

suite comprising bath with mains shower and shower screen, wash hand basin and close coupled wc. Heated towel rail. Extractor fan. Wall mounted mirror. Part panelled walls.

FRONT GARDEN

Block paved side-by-side parking. Hedge border.

REAR GARDEN

Laid to lawn with steps from rear width decking area and lighting. Secondary decked area. Two timber storage sheds. Outside tap. Gated access to front.

All measurements are approximate. The mention of appliances and/or services within these sales particulars does not imply that they are in full efficient working order. Please note that any services, heating systems or appliances have not been tested and no warranty can be given or implied as to their working order. **MORTGAGE & FINANCIAL** - The Mortgage Store can provide you with up to the minute information on all available rates. To arrange an appointment, telephone this office **YOUR HOME IS AT RISK IF YOU DO NOT KEEP UP REPAYMENTS ON A MORTGAGE OR OTHER LOANS SECURED ON IT.** Full quotation available on request. A suitable life policy may be required. Loans subject to status. Minimum age 18.

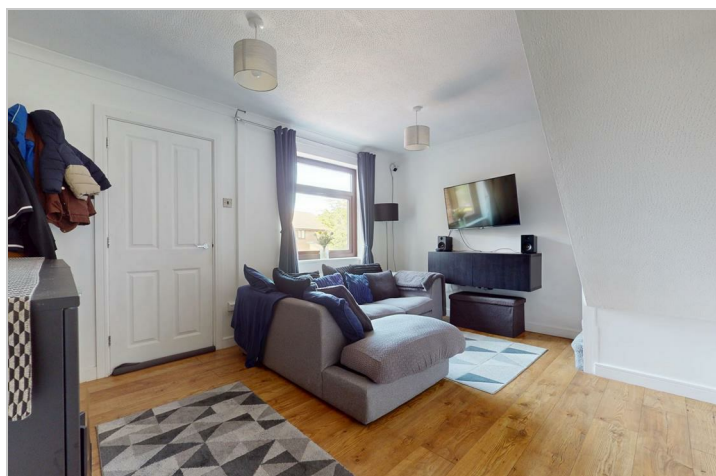
The above details have been submitted to our clients but at the moment have not been approved by them and we therefore cannot guarantee their accuracy and they are distributed on this basis. Please ensure that you have a copy of our approved details before committing yourself to any expense.

MORTGAGE & FINANCIAL - The Mortgage Store

Tel: 01908 304480

can provide you with up to the minute information on all available rates. To arrange an appointment, telephone this office **YOUR HOME IS AT RISK IF YOU DO NOT KEEP UP REPAYMENTS ON A MORTGAGE OR OTHER LOANS SECURED ON IT.** Full quotation available on request. A suitable life policy may be required. Loans subject to status. Minimum age 18.

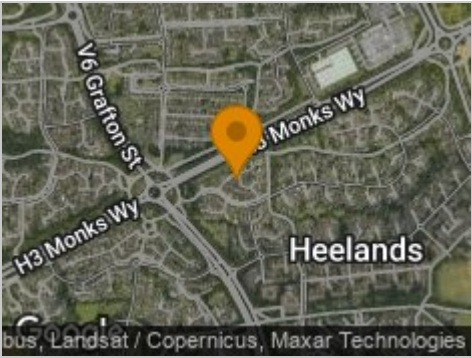
We routinely refer customers to Franklins solicitors, Gough Thorne and The Mortgage Store. It is your decision whether you choose to deal with them, in making that decision, you should know that we receive a referral fee in the region of £80 to £250 for recommending you to them



Road Map



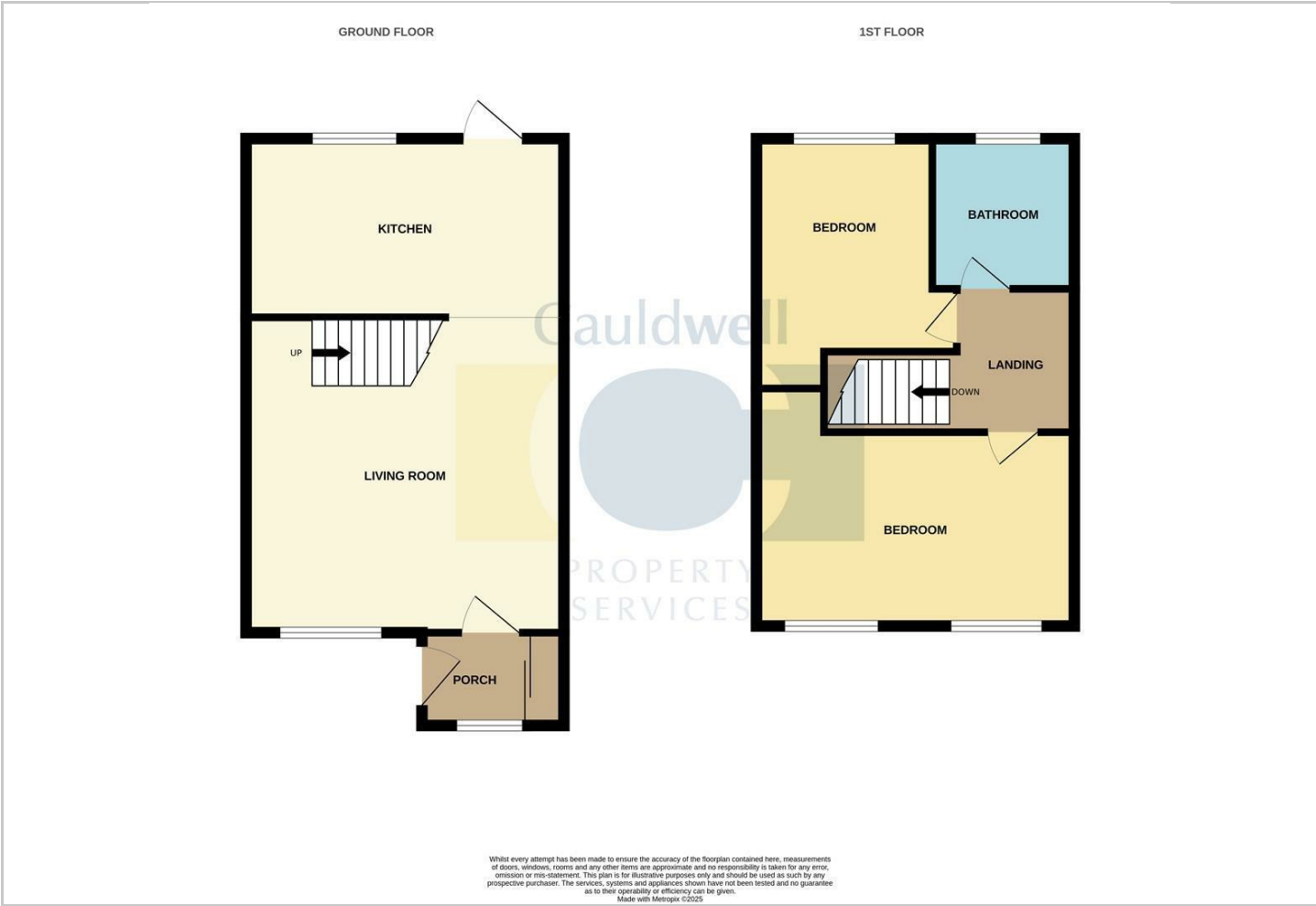
Hybrid Map



Terrain Map



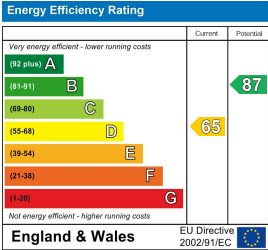
Floor Plan



Viewing

Please contact our Cauldwell Property Sales Office on 01908 304480 if you wish to arrange a viewing appointment for this property or require further information.

Energy Efficiency Graph



These particulars, whilst believed to be accurate are set out as a general outline only for guidance and do not constitute any part of an offer or contract. Intending purchasers should not rely on them as statements of representation of fact, but must satisfy themselves by inspection or otherwise as to their accuracy. No person in this firms employment has the authority to make or give any representation or warranty in respect of the property.