



Hillcrest Road, Hornchurch, RM11 1EF

- Three Bedrooms
- Kitchen/Diner
 - Driveway
- Detached Garage
 - 100 ft Garden
- Potential to Extend

£500,000 - Freehold - Council Tax: D

Hillcrest Road

Hornchurch, RM11 1EF



Entrance Porch

Part double glazed entrance door, double glazed windows to front and side, tiled flooring.

Entrance Hall

Entrance door, frosted double glazed window to front, stairs to first floor, under stairs cupboard, radiator.

Reception Room

13'10 x 11'11 (4.22m x 3.63m)

Double glazed bay window to front, radiator, coved ceiling.

Kitchen/Diner

17'9 x 11'10 narrowing to 8'7 (5.41m x 3.61m narrowing to 2.62m)

Double glazed French doors to rear, double glazed window to rear, laminate flooring. Kitchen includes wall and base units, stainless steel single drainer sink, gas hob, double oven, extractor, integrated dishwasher and washing machine, boiler, part tiled walls.

Landing

Loft access with ladder.

Bedroom One

13'10 x 10'11 (4.22m x 3.33m)

Double glazed bay window to front, coved ceiling, radiator, laminate flooring.

Bedroom Two

11'11 x 9'11 (3.63m x 3.02m)

Double glazed window to rear, radiator, laminate flooring.

Bedroom Three

8'11 x 7'7 (2.72m x 2.31m)

Double glazed window to rear, radiator, laminate flooring.

Bathroom

6'6 x 6'6 (1.98m x 1.98m)

Frosted double glazed window to front, low level WC, vanity wash hand basin, panelled bath with overhead shower, heated towel rail, tiled walls, tiled flooring.

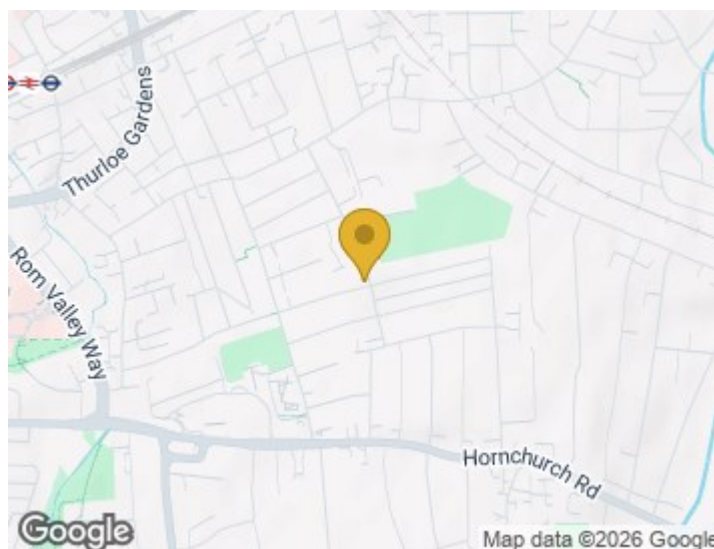
Garden

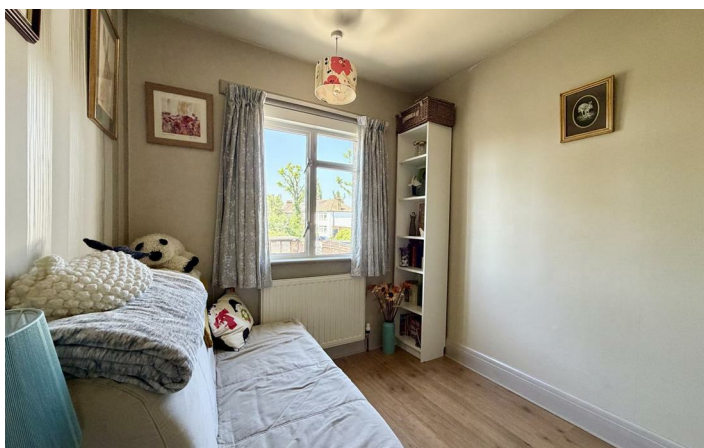
100' (30.48m)

Patio area, lawn, surrounding flower beds, outside tap and light. Barked area to rear, access to garage at rear of garden.

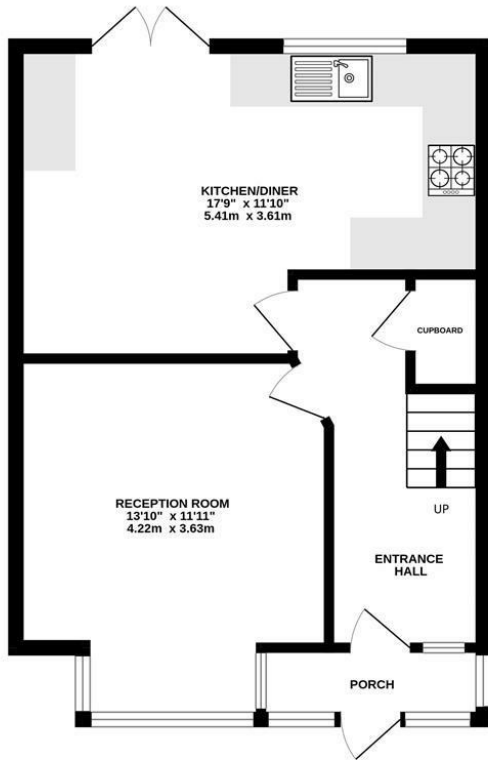
Driveway & Garage

Driveway to front. Detached garage (16'5 x 13'3) to rear with power and light and up and over door and additional gated parking are in front of garage.

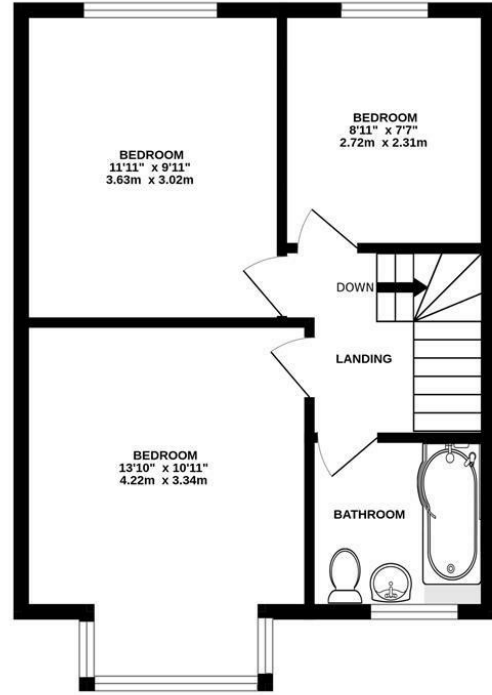




GROUND FLOOR
447 sq.ft. (41.5 sq.m.) approx.



1ST FLOOR
424 sq.ft. (39.4 sq.m.) approx.



TOTAL FLOOR AREA : 871 sq.ft. (80.9 sq.m.) approx.

Whilst every attempt has been made to ensure the accuracy of the floorplan contained here, measurements of doors, windows, rooms and any other items are approximate and no responsibility is taken for any error, omission or mis-statement. This plan is for illustrative purposes only and should be used as such by any prospective purchaser. The services, systems and appliances shown have not been tested and no guarantee as to their operability or efficiency can be given.
Made with Metropix ©2025

These particulars, whilst believed to be accurate are set out as a general outline only for guidance and do not constitute any part of an offer or contract. Intending purchasers should not rely on them as statements of representation of fact, but must satisfy themselves by inspection or otherwise as to their accuracy. No person in this firm's employment has the authority to make or give any representation or warranty in respect of the property.

Material Information:
Council Tax Band: D
Tenure: Freehold

