



Wellington House, Kidman Close, Gidea Park, RM2 6JD

£1,250 PCM (per calendar month)

Council Tax Band: C

Holding deposit equal to one weeks rent

Security deposit equal to five weeks rent



One bedroom apartment situated on the third floor, within a 6 minute walk of Gidea Park Station (googlemaps). The accommodation comprises of hallway, reception room, fitted kitchen, double bedroom and bathroom. Further benefits include allocated parking space, gas central heating, double glazing and communal gardens.



Hallway

Smooth ceiling. Storage cupboard, radiator, security entry phone system. Carpet.

Reception Room

14'8 x 10'4 (4.47m x 3.15m)

Double glazed window. Smooth ceiling, radiator with thermostatic valve. Carpet.

Kitchen

11'0 x 6'0 (3.35m x 1.83m)

Double glazed window. Range of white base and eye level wall cabinets with black worktops, 4 burner stainless steel gas hob set into worktop with overhead extractor hood and fan, integrated stainless steel fan oven beneath. Single drainer stainless steel sink unit set into worktop with space for freestanding washing machine beneath. Space for freestanding fridge/freezer. Smooth ceiling. Tiled walls. Laminate flooring.

Bedroom

12'5 x 9'11 max sizes (3.78m x 3.02m max sizes)

Double glazed window. Smooth ceiling, radiator with thermostatic valve. Carpet.

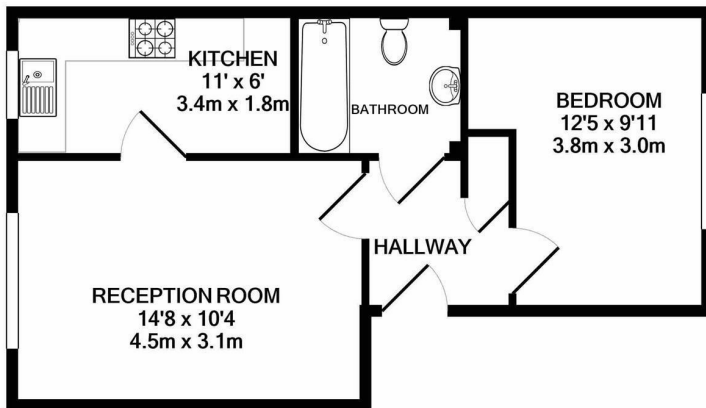
Bathroom

7'2 x 6' (2.18m x 1.83m)

Suite comprising of panelled bath with shower attachment to tap and overhead bracket, pedestal wash basin, low level WC. Smooth ceiling, extractor fan. Part tiled walls, radiator. Tiled floor with underfloor heating.

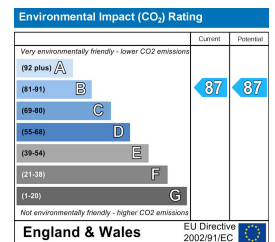
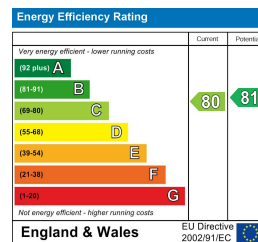
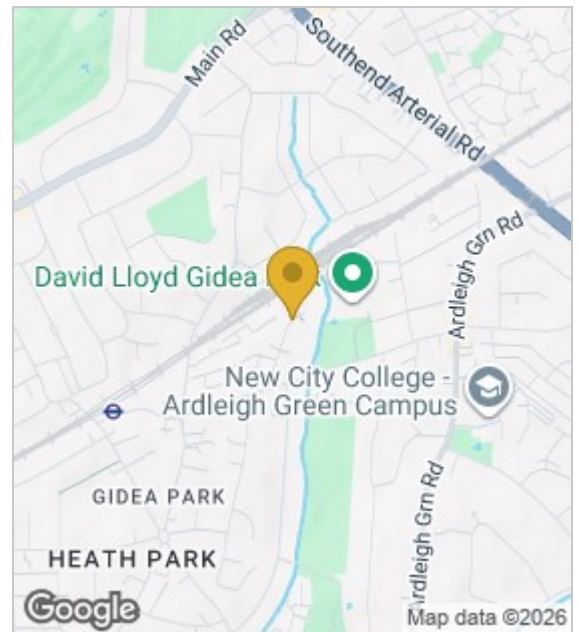
Parking

The property comes with an allocated parking space and permit. There are visitors parking spaces with visitor permits.



TOTAL APPROX. FLOOR AREA 416 SQ.FT. (38.7 SQ.M.)

Whilst every attempt has been made to ensure the accuracy of the floor plan contained here, measurements of doors, windows, rooms and any other items are approximate and no responsibility is taken for any error, omission, or mis-statement. This plan is for illustrative purposes only and should be used as such by any prospective purchaser. The services, systems and appliances shown have not been tested and no guarantee as to their operability or efficiency can be given
Made with Metropix ©2020



These particulars, whilst believed to be accurate are set out as a general outline only for guidance and do not constitute any part of an offer or contract. Intending purchasers should not rely on them as statements of representation of fact, but must satisfy themselves by inspection or otherwise as to their accuracy. No person in this firm's employment has the authority to make or give any representation or warranty in respect of the property.