

## Dock Road

Tilbury, RM18 7DQ

- Available from 26th May
- One Bedroom Apartment
- Electric Heating
- Two Lifts to All Floors
- Allocated Space in Secure Parking Garage with Internal Door
- 7 Minute Walk to Tilbury Town Station (source: google maps)
- Security Entry Phone System to Main Entrance
- Council Tax Band: B

**£1,000 PCM (per calendar month) - - Council Tax: B**

# Dock Road

Tilbury, RM18 7DQ



## Agents Note

All the photos used are from February 2023.

## Entrance Hall

Entrance door, smooth ceiling, cupboard, laminate flooring, security entry phone system.

## Kitchen/Lounge

18' x 12'9 (5.49m x 3.89m)

Double glazed window, smooth ceiling, wall and base units, breakfast bar, splash back tile, electric hob with integrated oven, overhead extractor and fan, single drainer stainless steel sink, laminate flooring, electric heater.

## Bedroom

12'9 x 8'5 (3.89m x 2.57m )

Double glazed window, smooth ceiling, laminate flooring, electric heater.

## Bathroom

6'11 x 5'7 (2.11m x 1.70m)

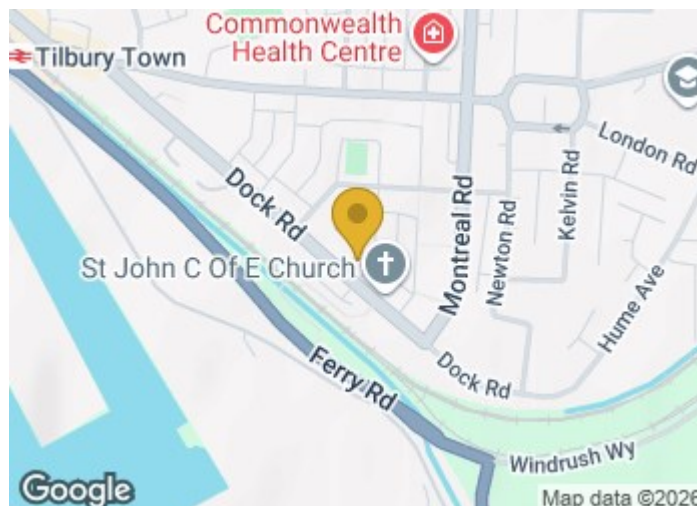
Double glazed window, suite comprising of panelled bath with shower attachment to tap and overhead bracket, pedestal wash basin, low level WC, smooth ceiling, part tiled walls, extractor fan, electric heater, vinyl flooring, splash back tile.

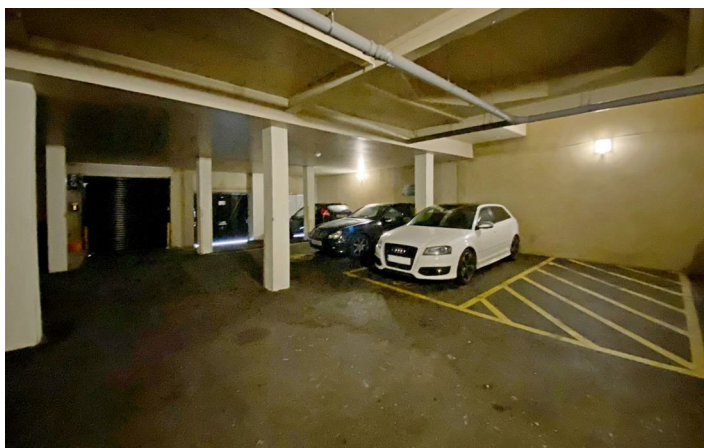
## Parking

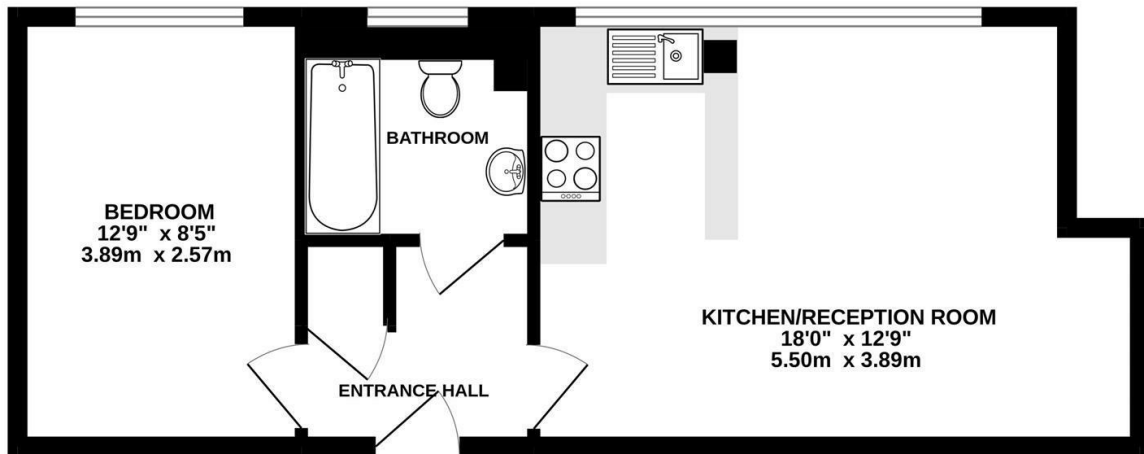
Allocated space in secure under cover parking garage with remote control access.

## Communal Area

Two lifts to all floors. Internal door into the secure parking garage.







TOTAL FLOOR AREA : 404 sq.ft. (37.6 sq.m.) approx.  
 Whilst every attempt has been made to ensure the accuracy of the floorplan contained here, measurements of doors, windows, rooms and any other items are approximate and no responsibility is taken for any error, omission or mis-statement. This plan is for illustrative purposes only and should be used as such by any prospective purchaser. The services, systems and appliances shown have not been tested and no guarantee as to their operability or efficiency can be given.  
 Made with Metropix ©2022

These particulars, whilst believed to be accurate are set out as a general outline only for guidance and do not constitute any part of an offer or contract. Intending purchasers should not rely on them as statements of representation of fact, but must satisfy themselves by inspection or otherwise as to their accuracy. No person in this firm's employment has the authority to make or give any representation or warranty in respect of the property.

Material Information:  
 Council Tax Band: B  
 Tenure:

