



Saunton Road ,Hornchurch, RM12 4HB

- Guide Price £550,000 - £575,000
 - Extended
 - Three Bedrooms
- Driveway For Three Cars
 - Semi Detached
- 0.8 Miles to Romford Station
 - 50' Rear Garden
- Potential To Extend Further STPP
 - Outbuilding With Power

Guide Price £550,000 - £575,000 - Freehold - Council Tax: D

Saunton Road

Hornchurch, RM12 4HB



Porch

6'8 x 2'6 (2.03m x 0.76m)

French doors, double glazed window to front and side.

Entrance Hall

20' x 7'5 (6.10m x 2.26m)

Entrance door, window to side, radiator, carpet.

Reception Room

27'8 x 11'6 (8.43m x 3.51m)

Double glazed window to front, gas fireplace, carpet.

Kitchen/ Dining Room

20'2 x 12'2 (6.15m x 3.71m)

Spotlights, vinyl flooring, double glazed window to rear, French doors to rear, wall and base units, single drainer sink, five ring gas hob, double oven, radiator, door into pantry area.

Downstairs Shower Room

6'3 x 5'8 (1.91m x 1.73m)

Shower cubicle, tiled walls and floor, low level WC, vanity hand was basin, radiator.

Landing

Double glazed window to side, Loft access.

Bedroom One

15'3 x 10'9 (4.65m x 3.28m)

Double glazed window to front, radiator, carpet.

Bedroom Two

12'6 x 11'6 (3.81m x 3.51m)

Double glazed window to rear, radiator, carpet.

Bedroom Three

9'1 x 7'5 (2.77m x 2.26m)

Double glazed window to front, carpet, radiator.

Bathroom

7'5 x 7'4 (2.26m x 2.24m)

Tiled walls and flooring, double glazed window to rear, low level WC, panelled bath, vanity hand wash basin.

Garden

50' (15.24m)

South facing, side pedestrian access, part paved and part laid to lawn, shed, outbuilding.

Outbuilding

16'4 x 9'2 (4.98m x 2.79m)

Bi-folding doors, double glazed window to front and side, power, carpet

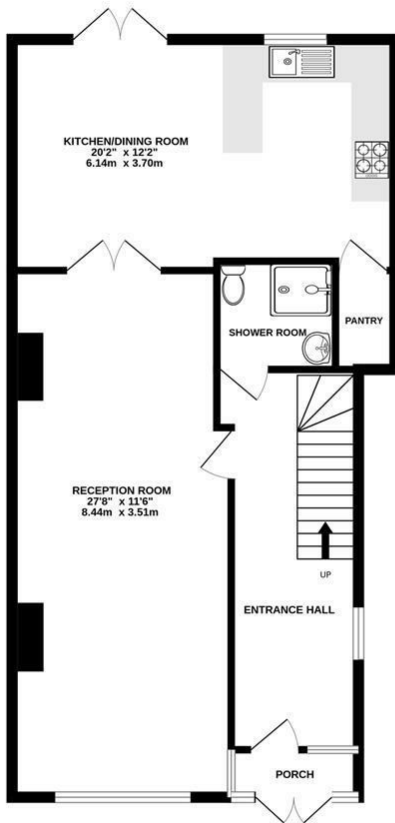
Parking

Driveway with EV charger.

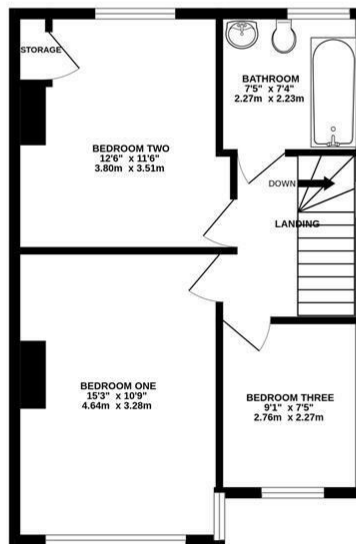




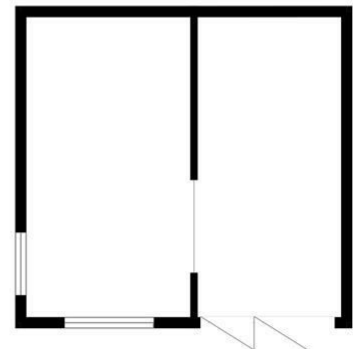
GROUND FLOOR
749 sq.ft. (69.6 sq.m.) approx.



1ST FLOOR
477 sq.ft. (44.3 sq.m.) approx.



OUTBUILDING
280 sq.ft. (26.0 sq.m.) approx.



TOTAL FLOOR AREA : 1507 sq.ft. (140.0 sq.m.) approx.

Whilst every attempt has been made to ensure the accuracy of the floorplan contained here, measurements of doors, windows, rooms and any other items are approximate and no responsibility is taken for any error, omission or mis-statement. This plan is for illustrative purposes only and should be used as such by any prospective purchaser. The services, systems and appliances shown have not been tested and no guarantee as to their operability or efficiency can be given.
Made with Metropix ©2026

These particulars, whilst believed to be accurate are set out as a general outline only for guidance and do not constitute any part of an offer or contract. Intending purchasers should not rely on them as statements of representation of fact, but must satisfy themselves by inspection or otherwise as to their accuracy. No person in this firm's employment has the authority to make or give any representation or warranty in respect of the property.

Material Information:
Council Tax Band: D
Tenure: Freehold

